

# Piscataqua River Bridge

## Kittery Meeting



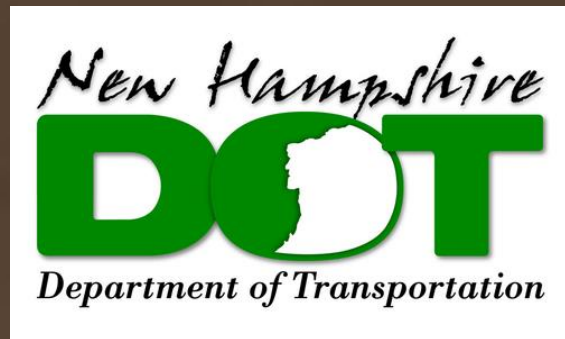
# Agenda

- Introductions
- Project Scope
- Construction Schedule and Maintaining Traffic
- Project Costs
- Schedule

# Project Purpose

- Preventative maintenance
- Improve traffic flow at peak volumes
- Improve safety
- This is a “Forever Bridge”

# Who is Involved?



**TY·LIN** INTERNATIONAL

# Project Recap

- TYLI contracted September 2014
- Deck Cored November 2015
- Preliminary Public Meeting February 2016
- Test Closure April/May 2017
- Draft PDR Submitted October 2017
- Formal Public Meeting Today

# Project Scope

# Project Scope

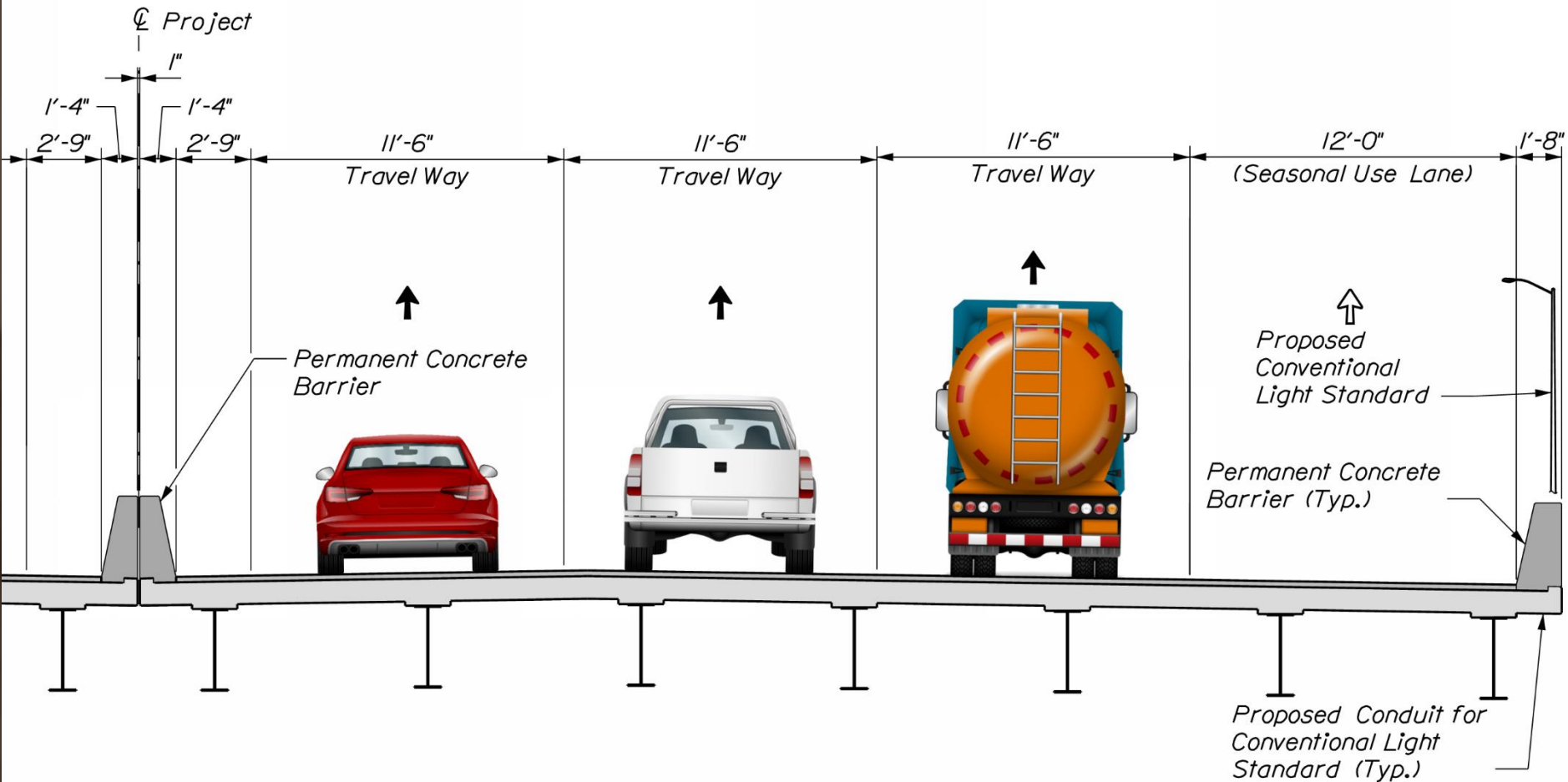
- Asphalt wearing surface replacement
- Deck patching
- Joint replacement
- Fascia & median barrier replacement
- Concrete patching

# Project Scope

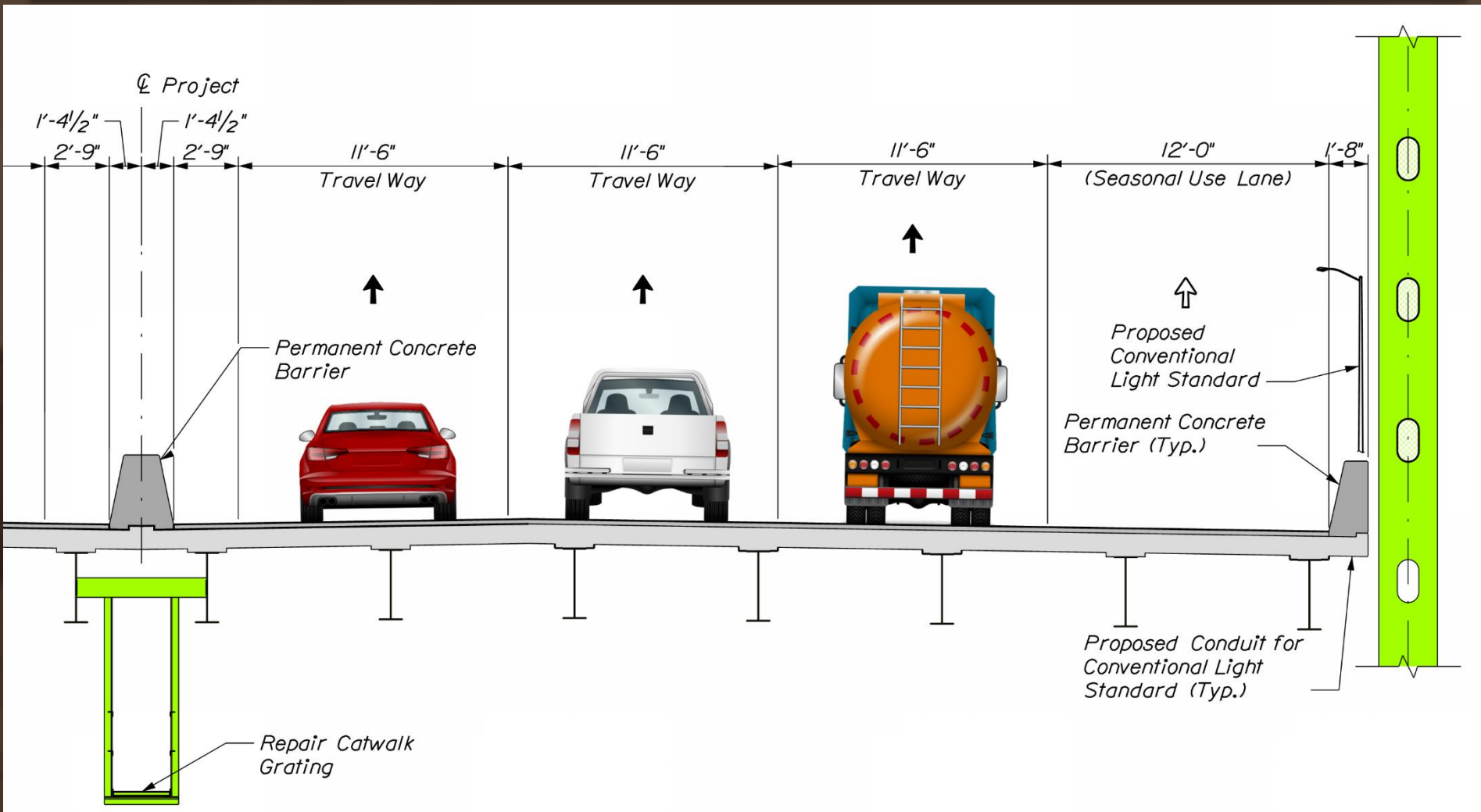
- Electrical system upgrade
- “Seasonal Shoulder Use” to increase capacity
- “Intelligent Transportation Systems (ITS)”



# Approach Spans Section



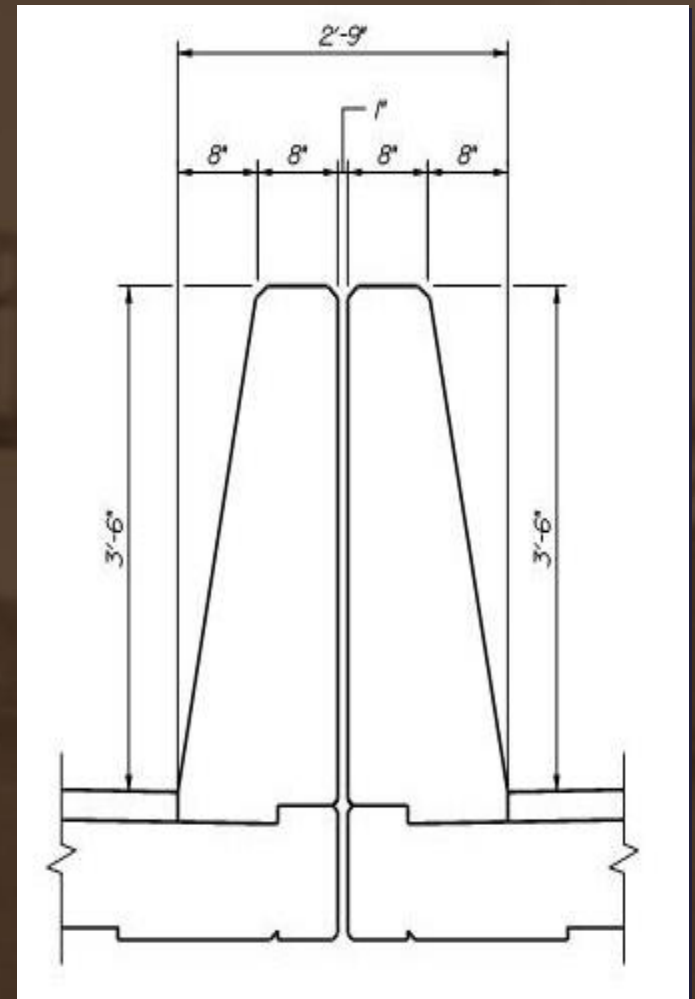
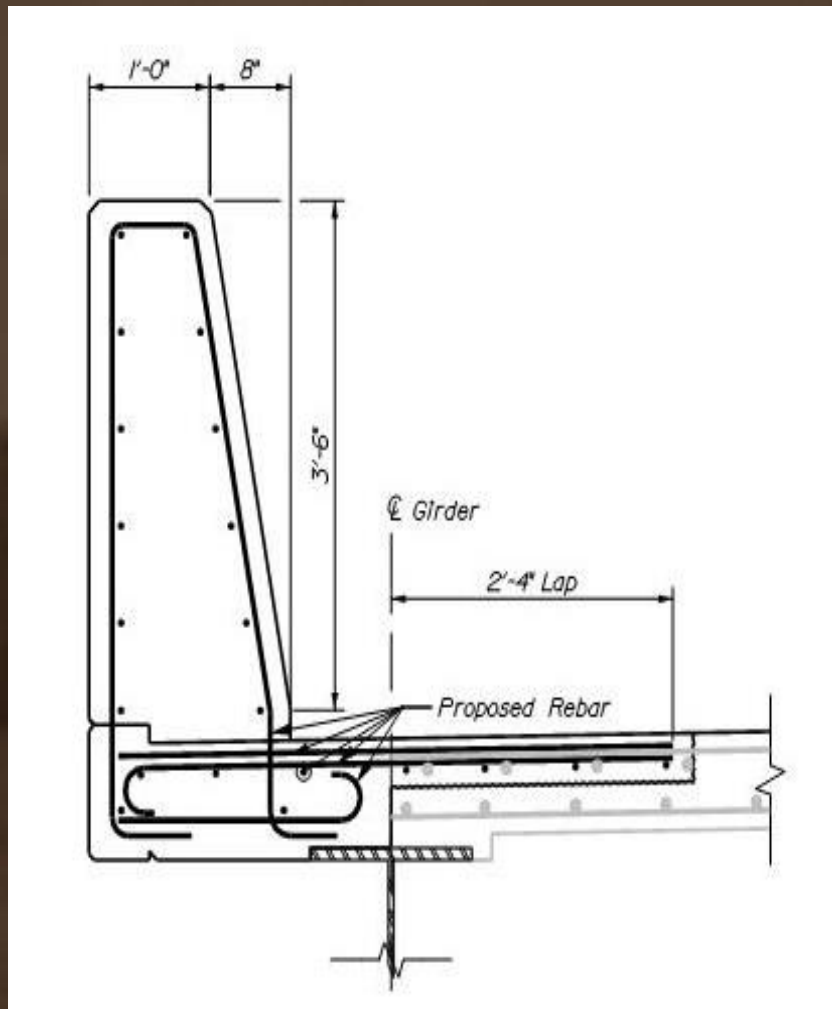
# Truss Span Section



# Existing Railing



# New Railing



# Seasonal Shoulder Use

- Use shoulder as a 4<sup>th</sup> travel lane for high traffic times
  - Increases capacity only when necessary
  - Time for future project planning
  - Provides snow storage
  - Additional bridge drains not required

# ITS Devices

- Sensors
- Monitoring
- Time/Distance signs
- Lane assignment signs
- Variable speed limit signs
- Camera monitoring



# Construction Scheduling & Maintaining Traffic

# Construction Schedule

- Min 2/Max 3 Construction Seasons
  - Beginning in 2019
  - 1 barrel at a time (northbound & southbound)
  - April to November
- Potential Incentives
  - Winter construction
  - Time

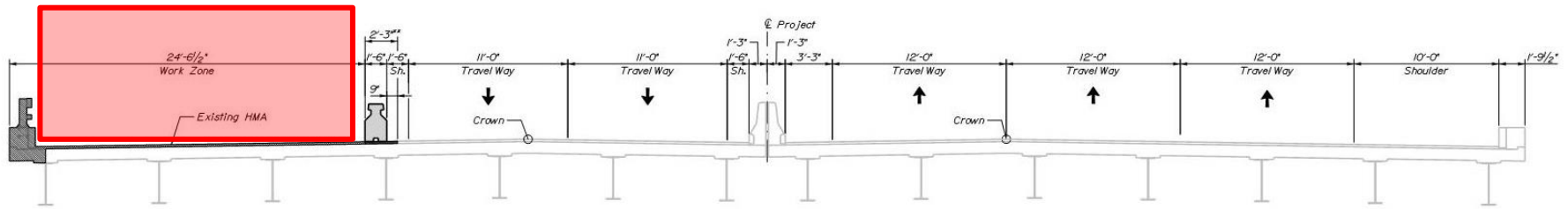


# Maintaining Traffic

- Three lanes open for summer traffic
- Work in shoulders, lane shifts
- Daytime single lane closures:
  - After Columbus Day
  - Before Memorial Day
- Nighttime single lane closures: 7pm - 6am

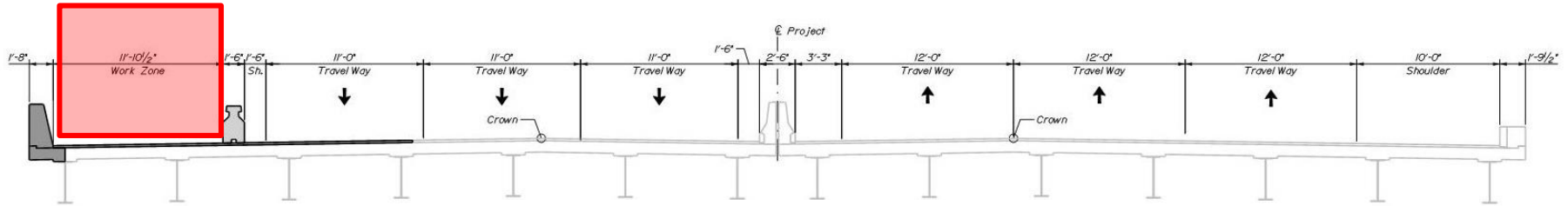
# Why Single Lane Closures?

- Balancing traffic impact vs. project duration
- Maintains preferred 11.5 ft lanes
- Still requires night work and hand paving

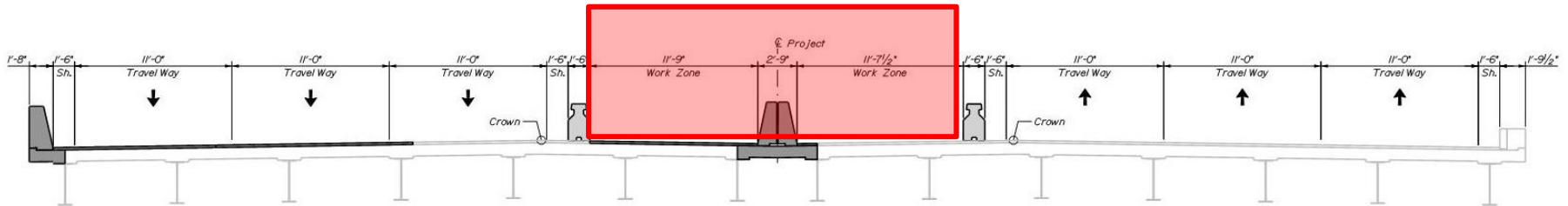


\*\* Portion to occur Overnight

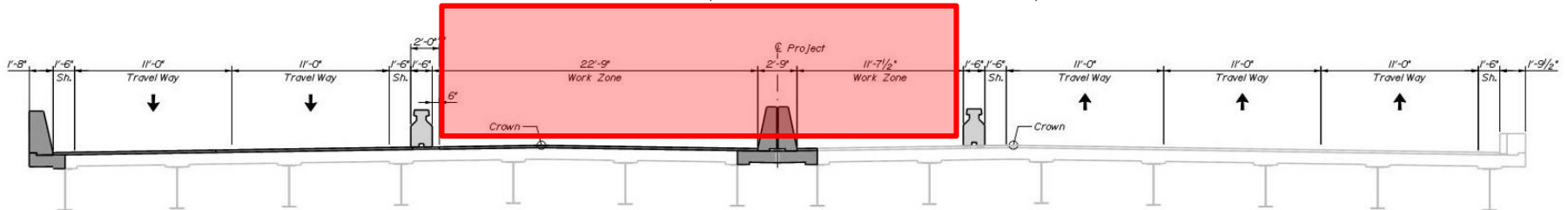
## Before Memorial Day



## Summer (Outside Shoulder)



## Summer (Inside Shoulder)



\*\* Portion to occur Overnight

## Late Fall

Note:  
Southbound Phasing Shown, Northbound Phasing Similar.

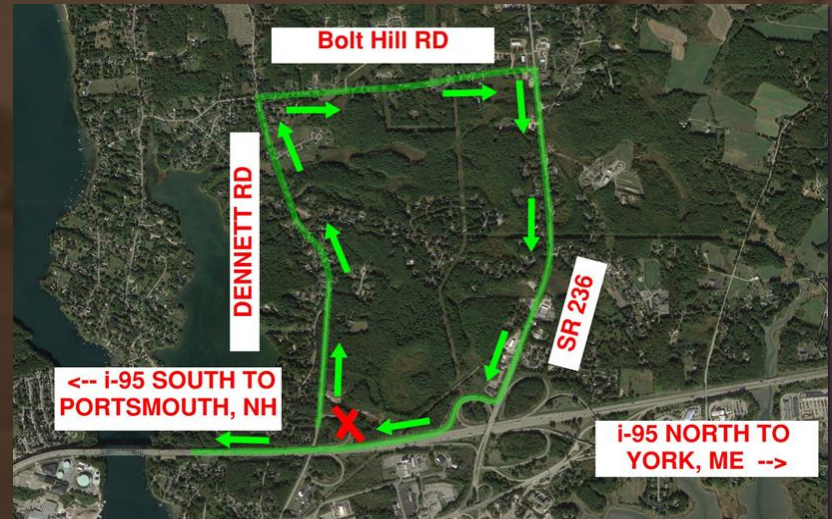
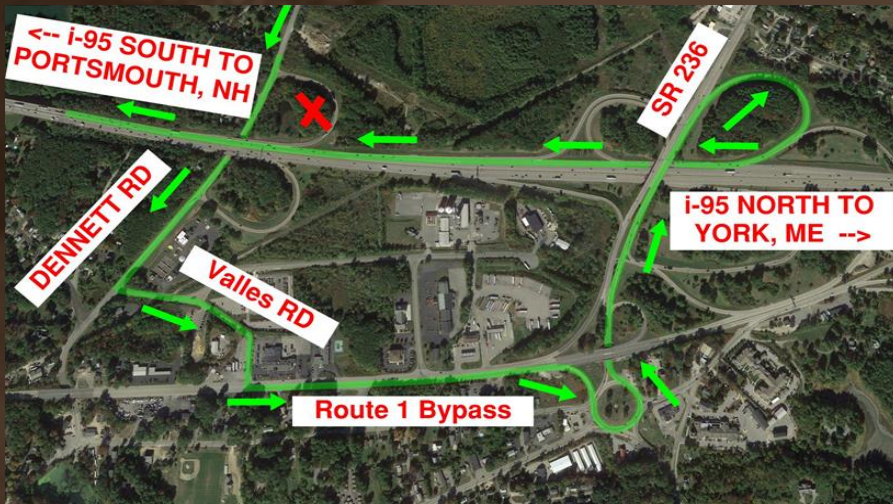
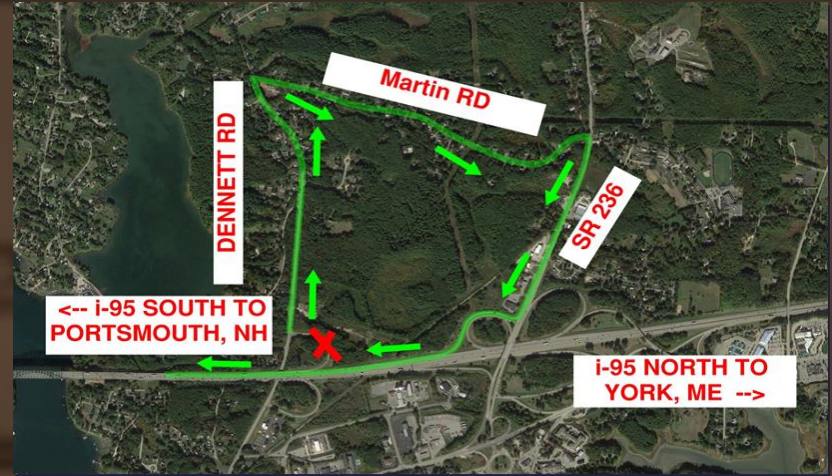
# Maintaining Traffic

- Exit closures as needed:
  - Exit 1 (ME) southbound
  - Exit 7 (NH) northbound
- Public outreach
- ITS monitoring
- Police presence, tow/service vehicle

# Possible Exit Ramp Closures

- Reduce traffic jams and accidents - fewer merge points in construction area
- Detour routes being investigated
- ME Exit 1 SB: detour to Exit 2 SB.
- NH Exit 7 NB On: detour to Exit 6 NB On or over Route 1 Bypass to Sarah Mildred Long Bridge.
- ME Exit 2 SB On: may be investigated for specific situations. Detour over Route 1 By-Pass to SML bridge.

# ME Exit 1 Ramp Closure Detours



# NH Exit 7 Ramp Closure Detours



# Preliminary Project Estimate

■ Preliminary Engineering	\$ 1.1M
■ Construction	\$ 25.6M
■ Construction Engineering	\$ 1.3M
■ Total approximately	\$ 28.0M



# Proposed Schedule

- Final Preliminary Design Report Soon
- Complete Design Fall 2018
- Advertise Late 2018
- Construction begin 2019
- Completion complete Fall 2020/2021

# Questions?

