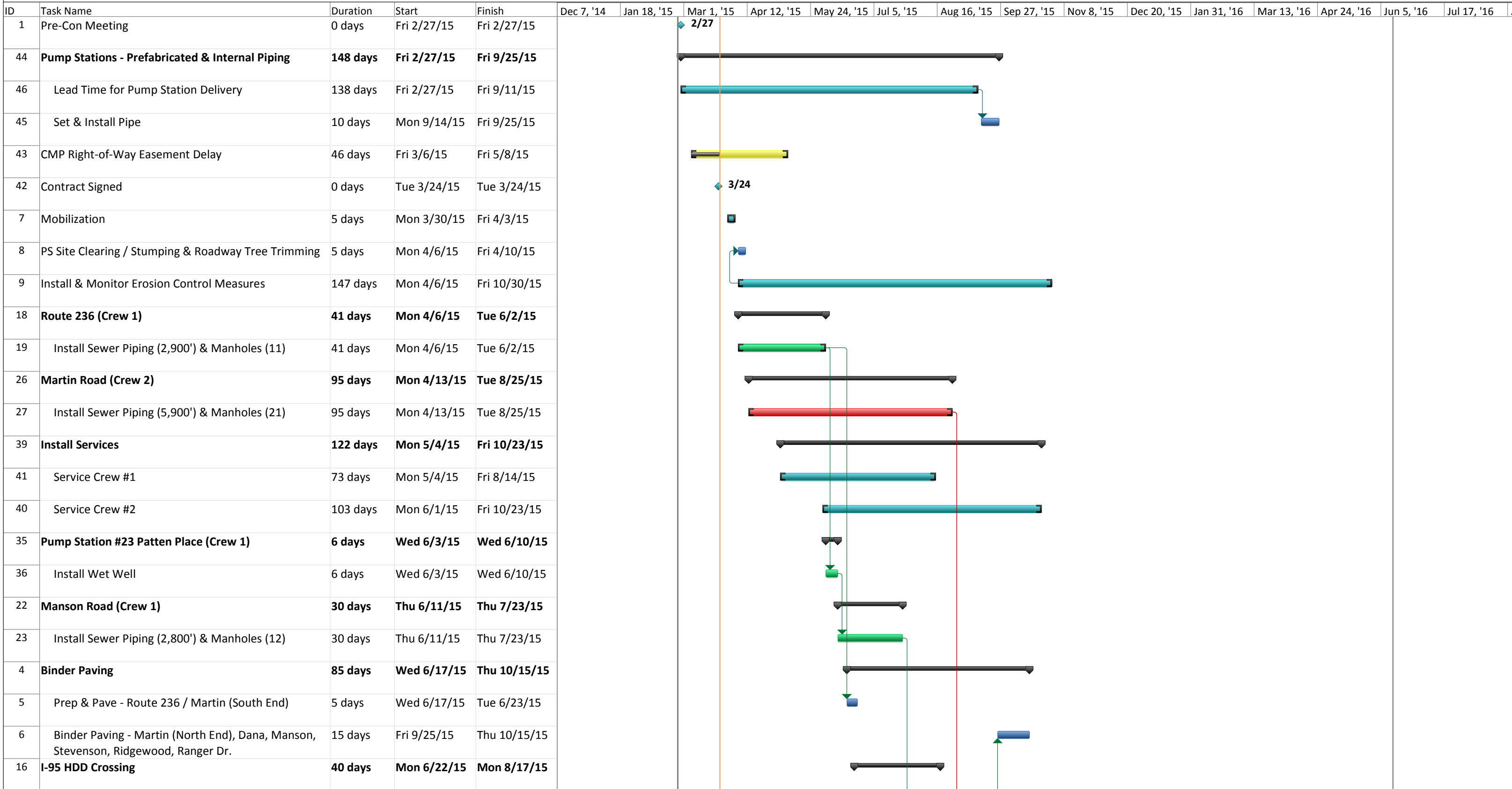


Sargent Corporation
Town of Kittery - Route 236 Sewer Extensions



Date: Wed 3/25/15

Task		Summary		External Milestone		Inactive Summary		Manual Summary Rollup		Finish-only	
Split		Project Summary		Inactive Task		Manual Task		Manual Summary		Deadline	
Milestone		External Tasks		Inactive Milestone		Duration-only		Start-only		Progress	

Sargent Corporation
Town of Kittery - Route 236 Sewer Extensions

ID	Task Name	Duration	Start	Finish	Dec 7, '14	Jan 18, '15	Mar 1, '15	Apr 12, '15	May 24, '15	Jul 5, '15	Aug 16, '15	Sep 27, '15	Nov 8, '15	Dec 20, '15	Jan 31, '16	Mar 13, '16	Apr 24, '16	Jun 5, '16	Jul 17, '16	
17	Install 16"/10" HDD Piping	40 days	Mon 6/22/15	Mon 8/17/15																
24	Stevenson Road - North Section (Crew 1)	20 days	Fri 7/24/15	Thu 8/20/15																
25	Install Sewer Piping (1,300') & Manholes (4)	20 days	Fri 7/24/15	Thu 8/20/15																
20	Dana Avenue (Crew 1)	14 days	Fri 8/21/15	Thu 9/10/15																
21	Install Sewer Piping (2,420') & Manholes (5)	14 days	Fri 8/21/15	Thu 9/10/15																
13	Cross Country West (Crew 1)	66 days	Mon 8/24/15	Tue 11/24/15																
14	Tree Clearing / Stumping at Cross-Country	5 days	Mon 8/24/15	Fri 8/28/15																
15	Install Sewer Piping (4,400') & Manholes (17)	41 days	Tue 9/29/15	Tue 11/24/15																
28	Ridgewood Drive (Crew 2)	6 days	Wed 8/26/15	Wed 9/2/15																
29	Install Sewer Piping (470') & Manholes (3)	6 days	Wed 8/26/15	Wed 9/2/15																
37	Pump Station #24 Martin Road (Crew 2)	5 days	Wed 8/26/15	Tue 9/1/15																
38	Install Wet Well	5 days	Wed 8/26/15	Tue 9/1/15																
10	Cross Country East (Crew 2)	19 days	Mon 8/31/15	Fri 9/25/15																
11	Tree Clearing / Stumping at Cross-Country	2 days	Mon 8/31/15	Tue 9/1/15																
12	Install Sewer Piping (1900') & Manholes (5)	17 days	Wed 9/2/15	Fri 9/25/15																
33	Pump Station #22 Utility Corridor (Crew 1)	12 days	Fri 9/11/15	Mon 9/28/15																
34	Install Wet Well & Shoring System	12 days	Fri 9/11/15	Mon 9/28/15																
2	Contract Substantial Completion	0 days	Mon 1/4/16	Mon 1/4/16																
30	Surface Paving	13 days	Mon 5/16/16	Wed 6/1/16																
31	Prep for Surface Paving	10 days	Mon 5/16/16	Fri 5/27/16																
32	Surface Paving	10 days	Thu 5/19/16	Wed 6/1/16																
3	Contract Final Completion	0 days	Sun 6/12/16	Sun 6/12/16																

Date: Wed 3/25/15

Task		Summary		External Milestone		Inactive Summary		Manual Summary Rollup		Finish-only	
Split		Project Summary		Inactive Task		Manual Task		Manual Summary		Deadline	
Milestone		External Tasks		Inactive Milestone		Duration-only		Start-only		Progress	