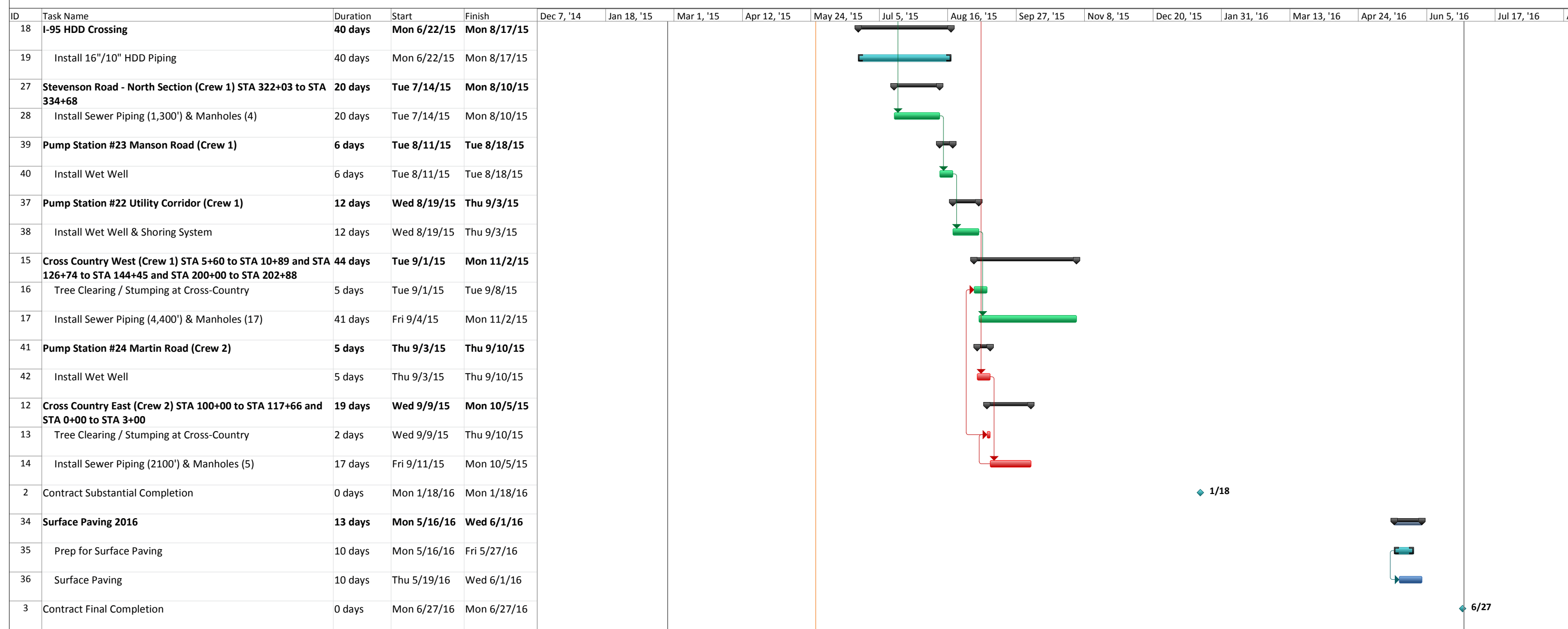


Sargent Corporation
Town of Kittery - Route 236 Sewer Extensions

ID	Task Name	Duration	Start	Finish	Dec 7, '14	Jan 18, '15	Mar 1, '15	Apr 12, '15	May 24, '15	Jul 5, '15	Aug 16, '15	Sep 27, '15	Nov 8, '15	Dec 20, '15	Jan 31, '16	Mar 13, '16	Apr 24, '16	Jun 5, '16	Jul 17, '16
1	Pre-Con Meeting	0 days	Fri 2/27/15	Fri 2/27/15			◆ 2/27												
48	Pump Stations - Prefabricated & Internal Piping	148 days	Fri 2/27/15	Fri 9/25/15			▶												
50	Lead Time for Pump Station Delivery	138 days	Fri 2/27/15	Fri 9/11/15			▶												
49	Set & Install Internal Suction and Discharge Piping	10 days	Mon 9/14/15	Fri 9/25/15															
47	CMP Right-of-Way Easement Delay	76 days	Fri 3/6/15	Mon 6/22/15			▶												
46	Contract Signed	0 days	Tue 3/24/15	Tue 3/24/15			◆ 3/24												
9	Mobilization	5 days	Mon 3/30/15	Fri 4/3/15			■												
10	PS Site Clearing / Stumping & Roadway Tree Trimming	5 days	Mon 4/6/15	Fri 4/10/15			▶												
11	Install & Monitor Erosion Control Measures	147 days	Mon 4/6/15	Fri 10/30/15			▶												
20	Route 236 (Crew 1) STA 202+88 to STA 231+80	25 days	Mon 4/6/15	Fri 5/8/15			▶												
21	Install Sewer Piping (2,900') & Manholes (11)	25 days	Mon 4/6/15	Fri 5/8/15			▶												
29	Martin Road (Crew 2) STA 509+54 to STA 637+87	101 days	Mon 4/13/15	Wed 9/2/15			▶												
30	Install Sewer Piping (5,800') & Manholes (21) section 1	39 days	Mon 4/13/15	Fri 6/5/15			▶												
32	Ridgewood Drive (Crew 2) STA 700+00 to STA 704+66	6 days	Mon 6/8/15	Mon 6/15/15					▶										
33	Install Sewer Piping (470') & Manholes (3)	6 days	Mon 6/8/15	Mon 6/15/15					▶										
31	Install Sewer Piping (5,800') & Manholes (21) section 2	56 days	Tue 6/16/15	Wed 9/2/15					▶										
22	Dana Avenue (Crew 1) STA 400+00 to STA 414+02	29 days	Mon 5/11/15	Fri 6/19/15					▶										
23	Install Gravity Piping (950') & Manholes (5)	14 days	Mon 5/11/15	Fri 5/29/15					▶										
24	Install Force Main Piping & Services (482')	10 days	Mon 6/8/15	Fri 6/19/15					▶										
43	Install Services	122 days	Mon 5/11/15	Fri 10/30/15					▶										
45	Service Crew #1	73 days	Mon 5/11/15	Fri 8/21/15					▶										
44	Service Crew #2	98 days	Mon 6/15/15	Fri 10/30/15					▶										
6	Binder Paving	69 days	Mon 5/18/15	Mon 8/24/15					▶										
7	Prep & Pave - Route 236	2 days	Mon 5/18/15	Tue 5/19/15					■										
8	Binder Paving - Martin, Dana, Manson, Stevenson, Ridgewood, Ranger Dr.	40 days	Mon 6/29/15	Mon 8/24/15					▶										
25	Manson Road (Crew 1) STA 300+00 to STA 322+00 and STA 800+00 to STA 802+08	30 days	Mon 6/1/15	Mon 7/13/15					▶										
26	Install Sewer Piping (3,000') & Manholes (12)	30 days	Mon 6/1/15	Mon 7/13/15					▶										
4	Surface Paving 2015	1 day	Tue 6/2/15	Tue 6/2/15					■										
5	Surface Paving - Route 236	1 day	Tue 6/2/15	Tue 6/2/15					■										

Date: Wed 5/27/15	Task		Summary		External Milestone	◆	Inactive Summary		Manual Summary Rollup		Finish-only		Deadline	⏏
	Split		Project Summary		Inactive Task	◻	Manual Task		Manual Summary		Progress		⏏	
	Milestone	◆	External Tasks		Inactive Milestone	◊	Duration-only		Start-only		Progress			

Sargent Corporation
Town of Kittery - Route 236 Sewer Extensions



Date: Wed 5/27/15	Task		Summary		External Milestone		Inactive Summary		Manual Summary Rollup		Finish-only	
	Split		Project Summary		Inactive Task		Manual Task		Manual Summary		Deadline	
	Milestone		External Tasks		Inactive Milestone		Duration-only		Start-only		Progress	