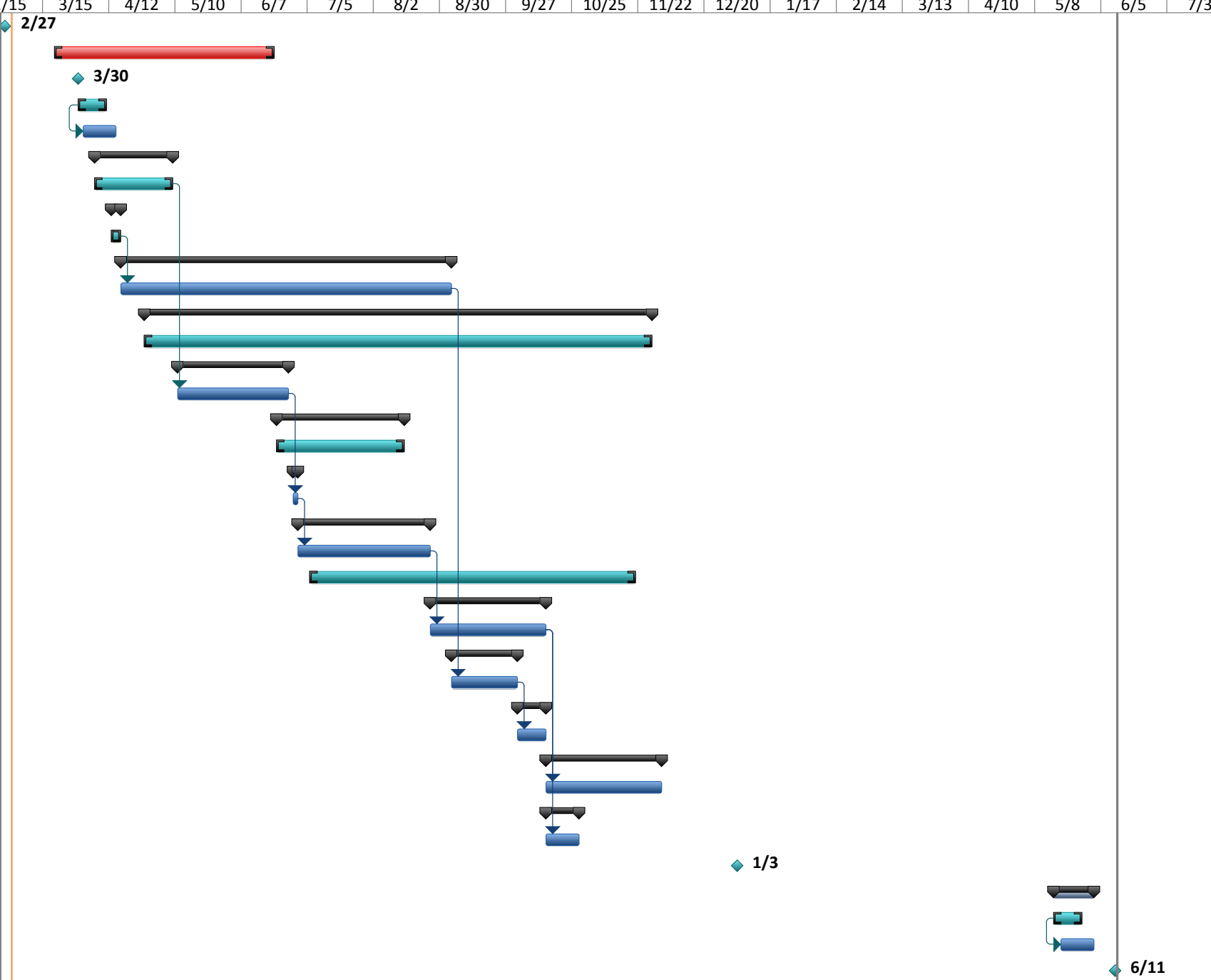


Sargent Corporation
Town of Kittery - Route 236 Sewer Extensions

ID	Task Mode	Task Name	Duration	Start	Finish	January 1	March 1		May 1		July 1		September 1		November 1		January 1		March 1		May 1		July 1		
						1/18	2/15	3/15	4/12	5/10	6/7	7/5	8/2	8/30	9/27	10/25	11/22	12/20	1/17	2/14	3/13	4/10	5/8	6/5	7/3
1		Pre-Con Meeting / Contract Signing	0 days	Fri 2/27/15	Fri 2/27/15																				
34		Cottontail Restriction Time (STA 125+00 to 204+00)	67 days	Fri 3/20/15	Sat 6/20/15																				
4		Mobilization	0 days	Mon 3/30/15	Mon 3/30/15																				
6		Install Erosion Control Measures (4,500')	10 days	Mon 3/30/15	Fri 4/10/15																				
5		Site Clearing / Stumping / Grinding	10 days	Wed 4/1/15	Tue 4/14/15																				
7		Cross Country East (Crew 1)	25 days	Mon 4/6/15	Fri 5/8/15																				
8		Install Sewer Piping (1900') & Manholes (5)	25 days	Mon 4/6/15	Fri 5/8/15																				
32		Pump Station #24 Martin Road (Crew 2)	4 days	Mon 4/13/15	Thu 4/16/15																				
33		Install Wet Well	4 days	Mon 4/13/15	Thu 4/16/15																				
21		Martin Road (Crew 2)	100 days	Fri 4/17/15	Thu 9/3/15																				
22		Install Sewer Piping (5,900') & Manholes (21)	100 days	Fri 4/17/15	Thu 9/3/15																				
36		Install Services	155 days	Mon 4/27/15	Fri 11/27/15																				
37		Install Services	155 days	Mon 4/27/15	Fri 11/27/15																				
13		Route 236 (Crew 1)	35 days	Mon 5/11/15	Fri 6/26/15																				
14		Install Sewer Piping (2,700') & Manholes (9)	35 days	Mon 5/11/15	Fri 6/26/15																				
11		I-95 HDD Crossing	40 days	Mon 6/22/15	Fri 8/14/15																				
12		Install 16"/10" HDD Piping	40 days	Mon 6/22/15	Fri 8/14/15																				
30		Pump Station #23 Patten Place (Crew 1)	2 days	Mon 6/29/15	Tue 6/30/15																				
31		Install Wet Well	2 days	Mon 6/29/15	Tue 6/30/15																				
17		Manson Road (Crew 1)	40 days	Wed 7/1/15	Tue 8/25/15																				
18		Install Sewer Piping (2,800') & Manholes (12)	40 days	Wed 7/1/15	Tue 8/25/15																				
35		Pump Stations	100 days	Mon 7/6/15	Fri 11/20/15																				
9		Cross Country West (Crew 1)	35 days	Wed 8/26/15	Tue 10/13/15																				
10		Install Sewer Piping (4,400') & Manholes (17)	35 days	Wed 8/26/15	Tue 10/13/15																				
19		Stevenson Road - North (Crew 2)	20 days	Fri 9/4/15	Thu 10/1/15																				
20		Install Sewer Piping (1,300') & Manholes (4)	20 days	Fri 9/4/15	Thu 10/1/15																				
23		Ridgewood Drive (Crew 2)	8 days	Fri 10/2/15	Tue 10/13/15																				
24		Install Sewer Piping (470') & Manholes (3)	8 days	Fri 10/2/15	Tue 10/13/15																				
15		Dana Avenue (Crew 1)	35 days	Wed 10/14/15	Tue 12/1/15																				
16		Install Sewer Piping (2,420') & Manholes (5)	35 days	Wed 10/14/15	Tue 12/1/15																				
28		Pump Station #22 Utility Corridor	10 days	Wed 10/14/15	Tue 10/27/15																				
29		Install Wet Well	10 days	Wed 10/14/15	Tue 10/27/15																				
2		Substantial Completion	0 days	Sun 1/3/16	Sun 1/3/16																				
25		Surface Paving	13 days	Mon 5/16/16	Wed 6/1/16																				
26		Prep for Surface Paving	10 days	Mon 5/16/16	Fri 5/27/16																				
27		Surface Paving	10 days	Thu 5/19/16	Wed 6/1/16																				
3		Final Completion	0 days	Sat 6/11/16	Sat 6/11/16																				



Project: Kittery - Rev. 0 Schedule 2
Date: Mon 3/2/15

Task		Summary		External Milestone		Inactive Summary		Manual Summary Rollup		Finish-only	
Split		Project Summary		Inactive Task		Manual Task		Manual Summary		Deadline	
Milestone		External Tasks		Inactive Milestone		Duration-only		Start-only		Progress	