



TOWN OF KITTERY
Planning and Development
200 Rogers Road, Kittery, ME 03904
Telephone: 207-475-1304 Fax: 207-439-6806

TO: PLANNING BOARD
FROM: ADAM CAUSEY, DIRECTOR OF PLANNING & DEVELOPMENT
SUBJECT: RICE LIBRARY EXPANSION UPDATE
DATE: MAY 16, 2019

The Town of Kittery voted to make the Rice Library a Town department and the Library Building Committee is planning an expansion of the Rice Library. The Committee has selected architects to design the addition to the historic structure. Construction of the expansion will only happen if Town residents vote to fund the project via a bond referendum. Town Council will decide if and when that vote is scheduled.

The architects have held several meetings with Town stakeholders to gain insight on the desires of the community and form the basis of programming decisions. The Committee held a public design workshop with the architects at the Kittery Community Center on April 24, 2019. That report is posted on the Town website here: http://www.kitteryme.gov/sites/kitteryme/files/uploads/2019.04.24_rice_library_community_meeting_final.pdf.

On Wednesday, May 22, the Rice Library Committee will meet to select a primary design concept. After that meeting, design activities will pause to allow for Town Council to schedule a vote for a bond referendum. If the Town decides to fund the library expansion, design and plan review activities will resume after the vote. The expansion plans will then be reviewed per applicable land use and development codes.

Thank you,

Adam Causey, AICP
Director, Planning & Development Department

scott simons architects
designed for human potential



Rice Public Library

April 24, 2019

Introductions



Scott Simons - Principal

Ryan Kanteres - Project Architect

Seth Wilshultz - Project Manager



Michael Lassel - Principal

Sarah Hourihane - Project Architect

Michal Kaleta - Project Manager



Evening Goals

1. Provide Update
2. Discuss Community Needs
3. Explore Community Engagement

History of Project

Rice Public Library Timeline

1888 - Construction of Rice Public Library

1979 - RPL added to the National Historic Register

1988 - 1990 - Rice Library purchases Taylor Building, renovates and opens annex

2011 - Cohen Associates report assessing program needs issued

2015 - Lassel Architects report assessing program needs issued

2015 - Lassel Architects develops conceptual design of a new library off-site

2017 - The Town of Kittery votes to rehabilitate and add to existing library building

2018 - Founding of Library Building Committee to explore expansion options

Assessment of Existing Conditions



Pamela Hawkes - Historic Preservation Architect

Programming Interviews and Assessment

Library Staff Interviews

Feb 06, 2019

Friends of the Library Interviews

Feb 06, 2019

Kittery Schools Interviews

Feb 13, 2019

Library Board Interviews

Feb 26, 2019

Kittery Community Center Interviews

Feb 26, 2019

Kittery Foreside Group Interviews

Feb 26, 2019

Teen User Interviews

Feb 26, 2019





garden
outdoor event space



multi-use spaces



bright reading spaces



meeting room
teleconference and support



charging cafe



fabrication lab
maker space
stem learning



Honor Historically Significant Structures



Preserve Significant Features



Separation
Provide a clear delineation between new and old



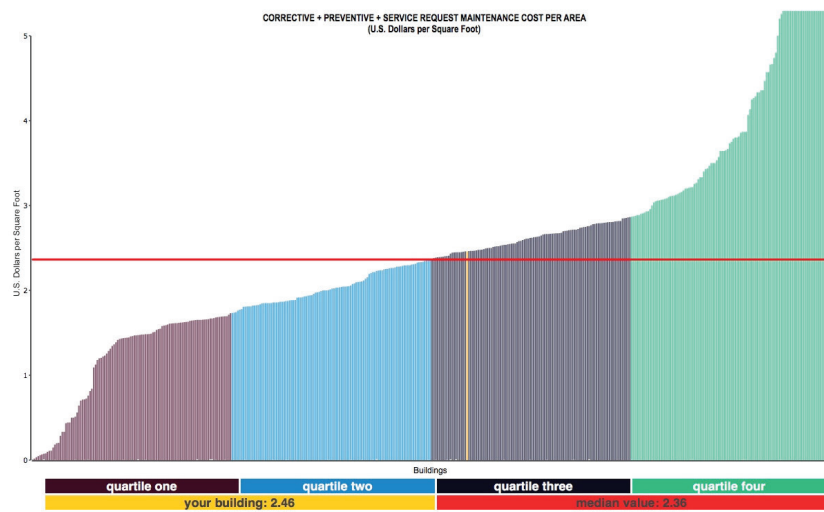
Separation
Provide a clear delineation between new and old



Scale
Develop a building mass which is compatible with the existing context



Scale
Develop a building mass which is compatible with the existing context

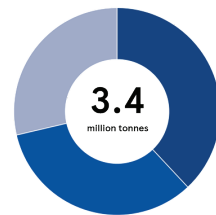
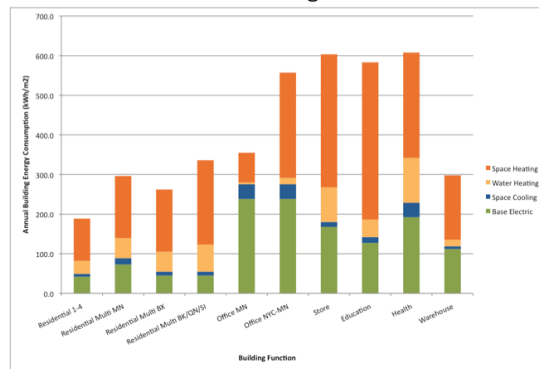


operating costs
life cycle costs



daylighting

Annual Energy Consumption Intensities by End Use and Building Function



carbon footprint
energy usage



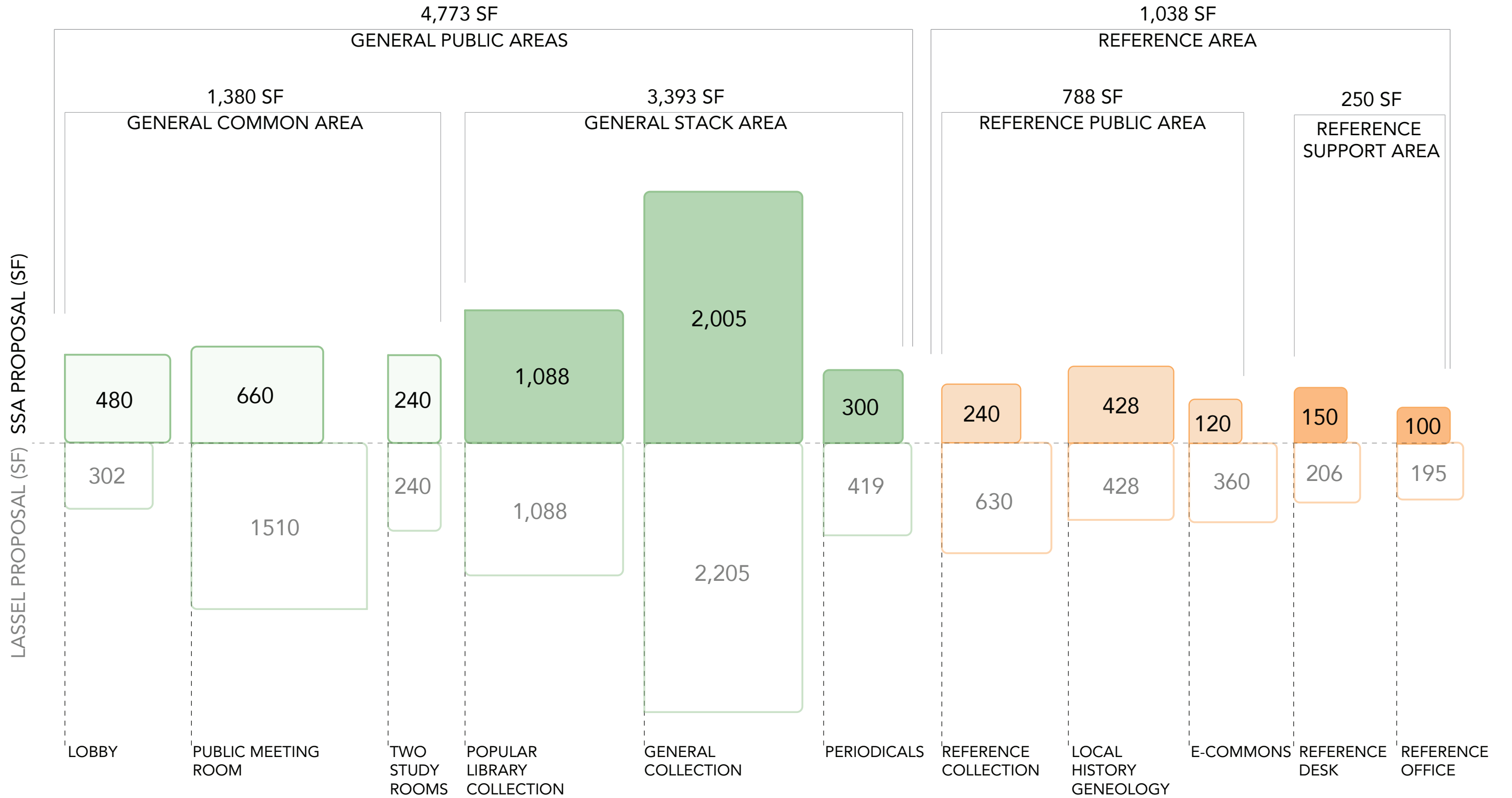
site design
open space / shading
storm water impact

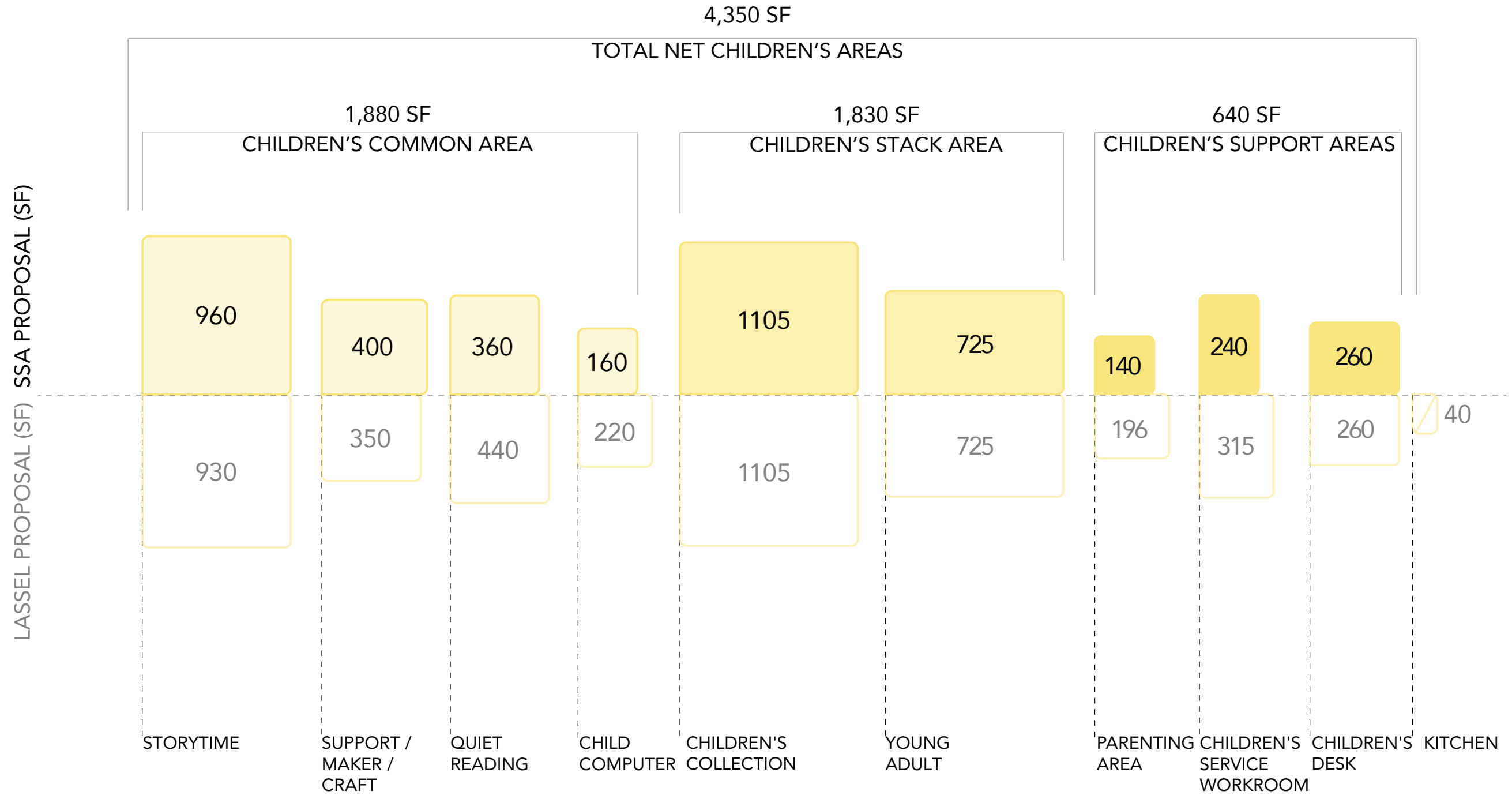


indoor environmental quality



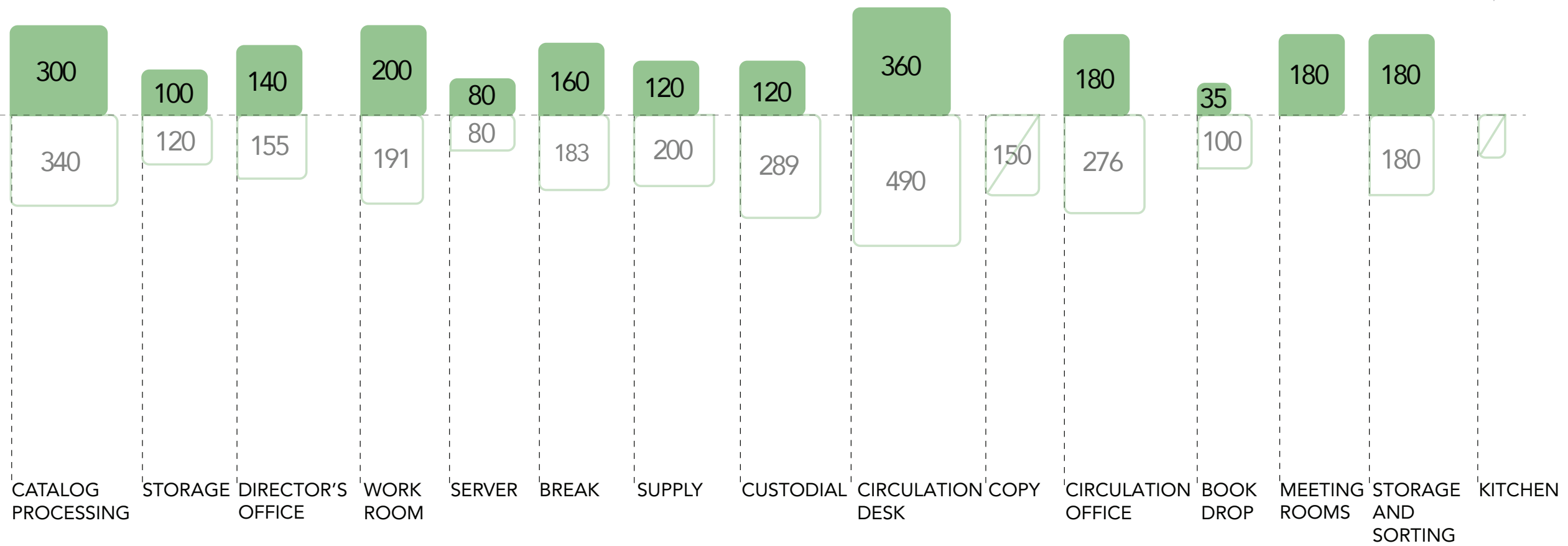
healthy materials

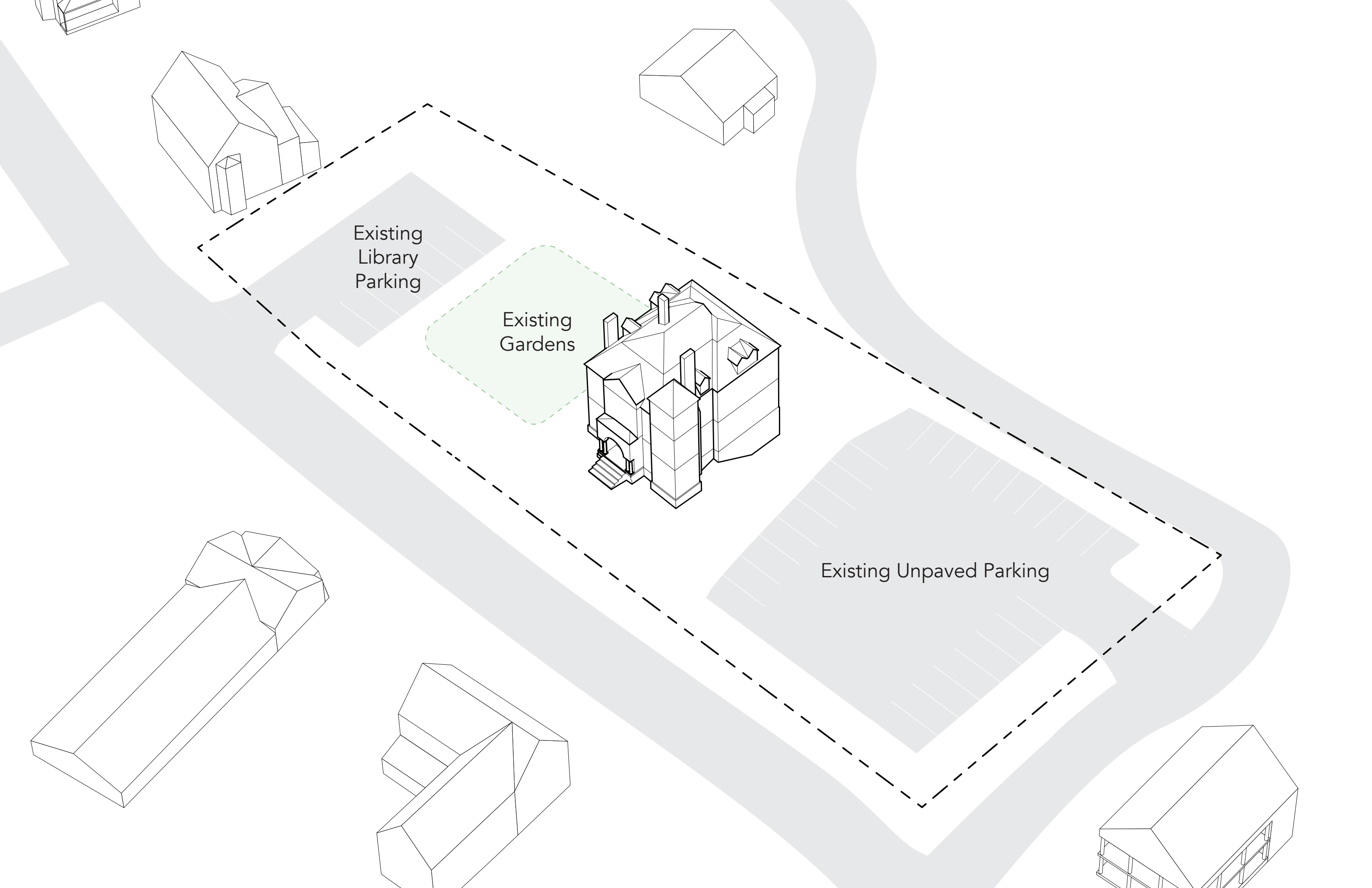




LASSEL PROPOSAL (SF) SSA PROPOSAL (SF)

2,155 SF
GENERAL SERVICE AREAS



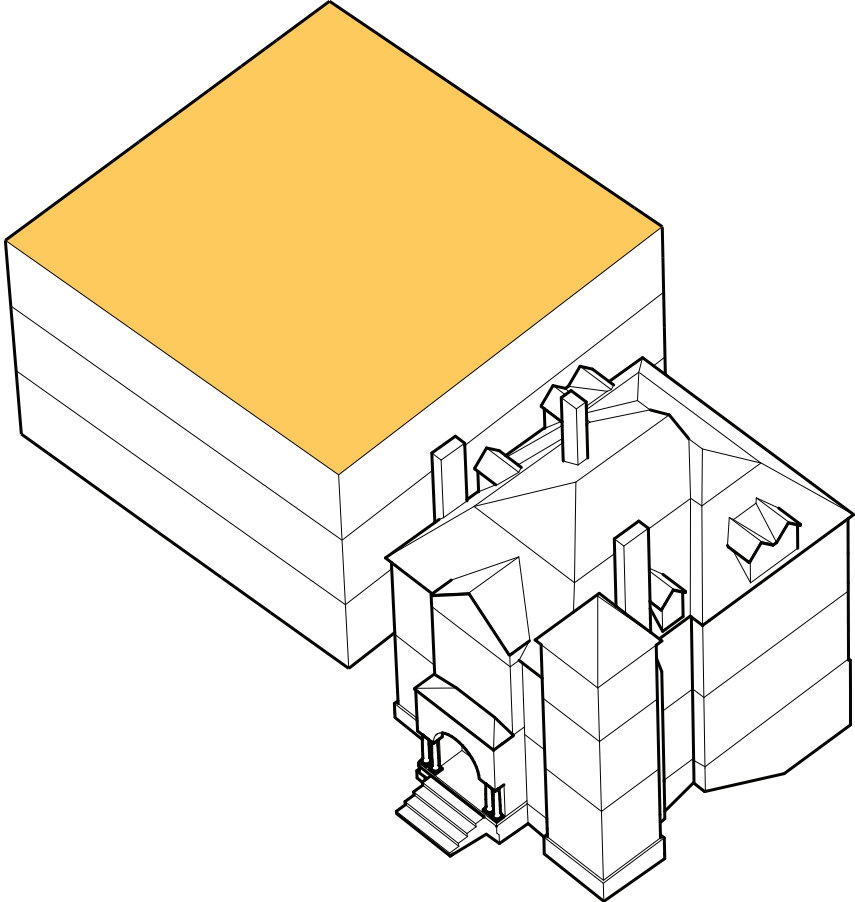


Existing
Library
Parking

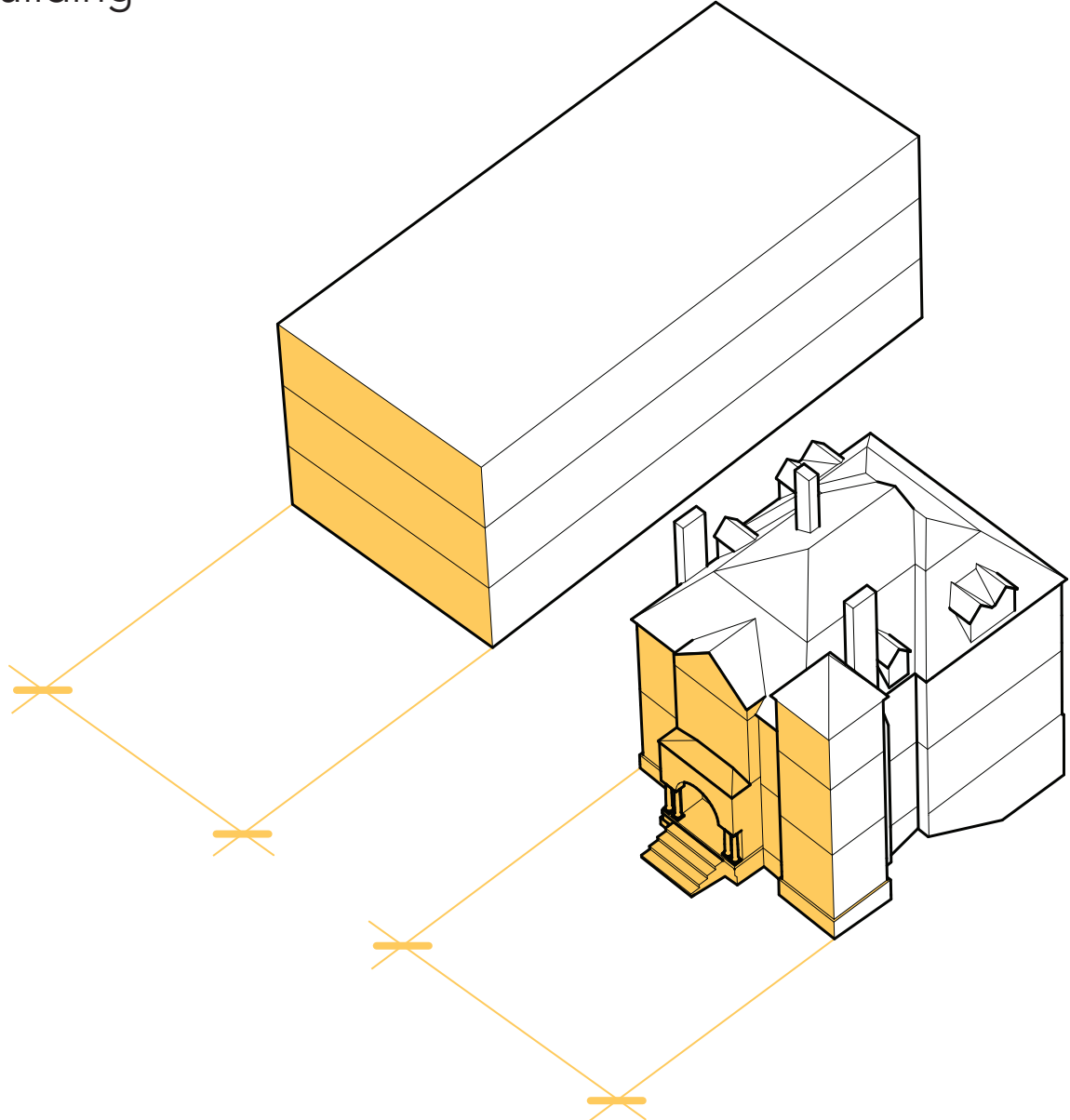
Existing
Gardens

Existing Unpaved Parking

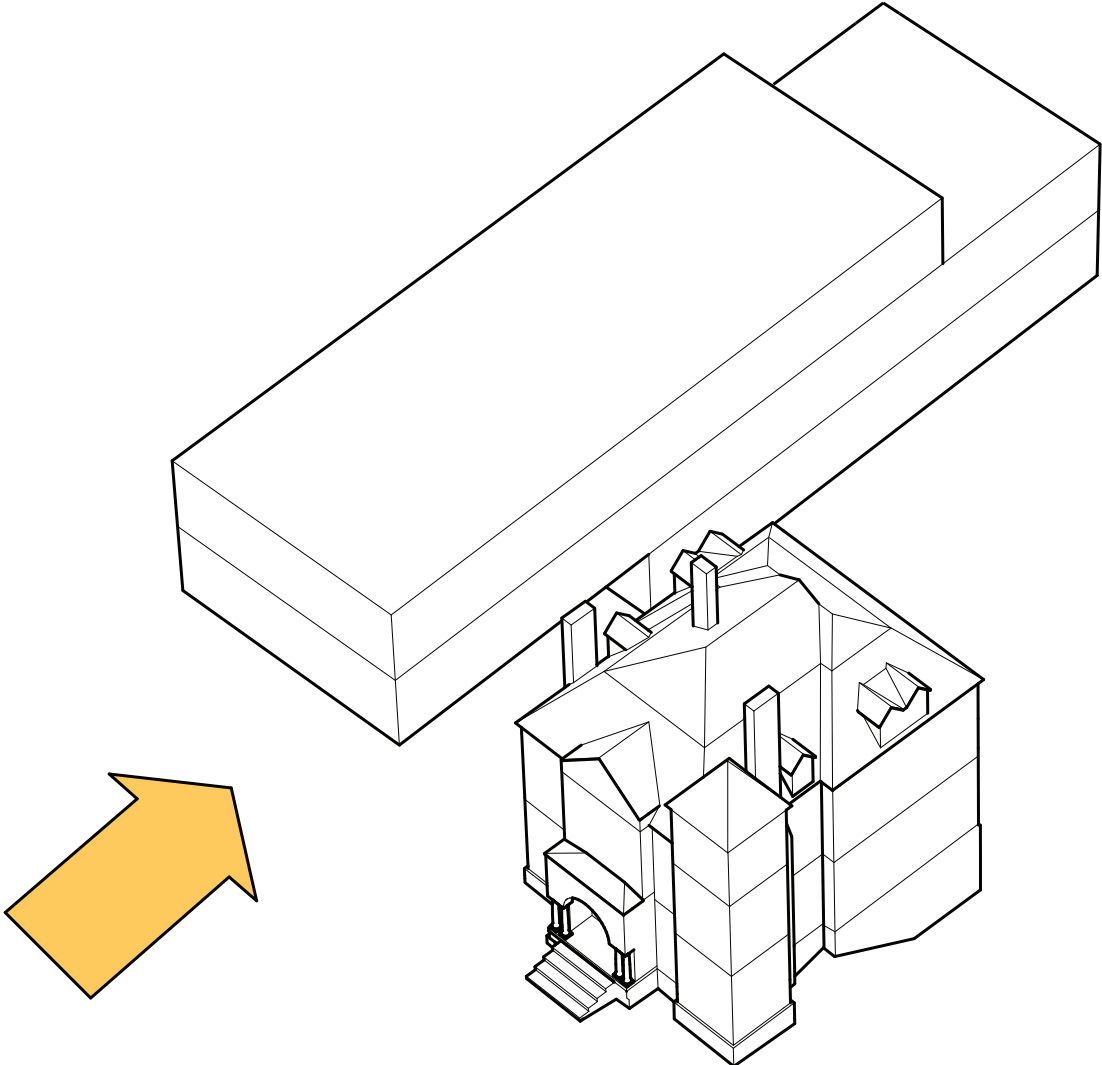
North Scheme -
Step 1 - Required Square Footage



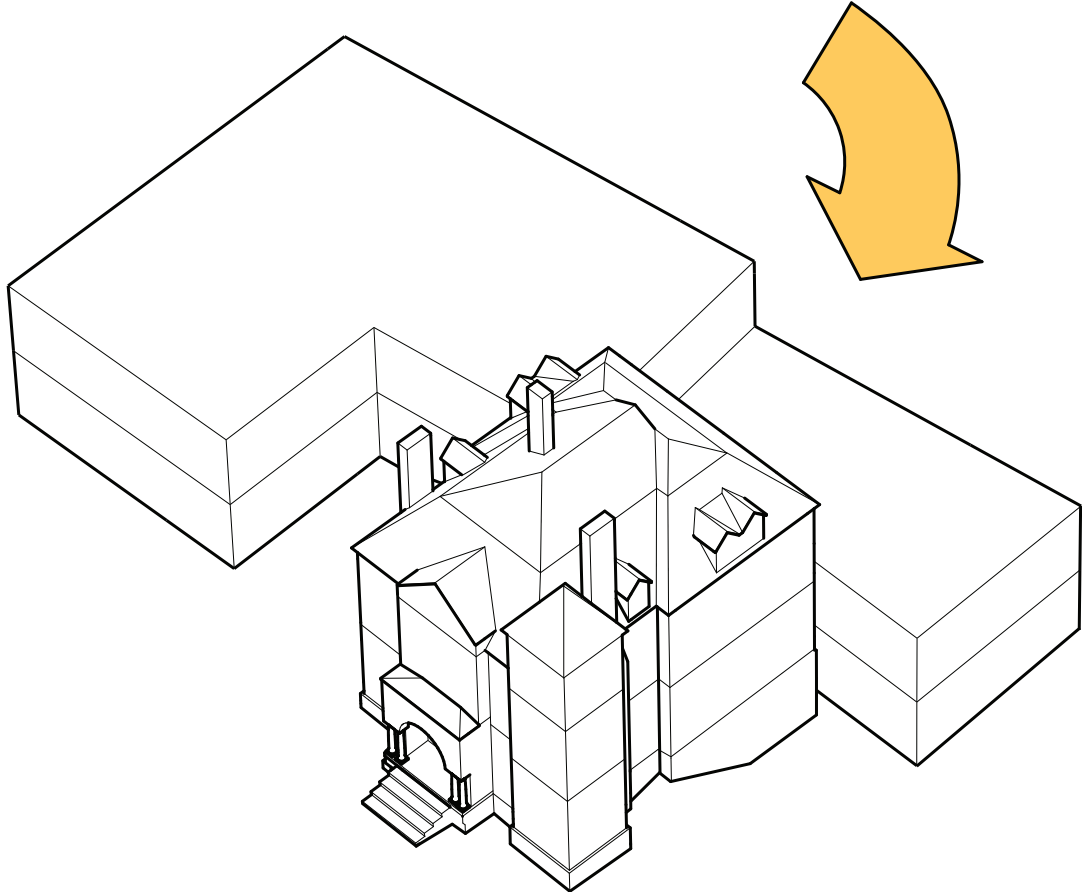
North Scheme -
Step 2 - Scaling to Historic Building



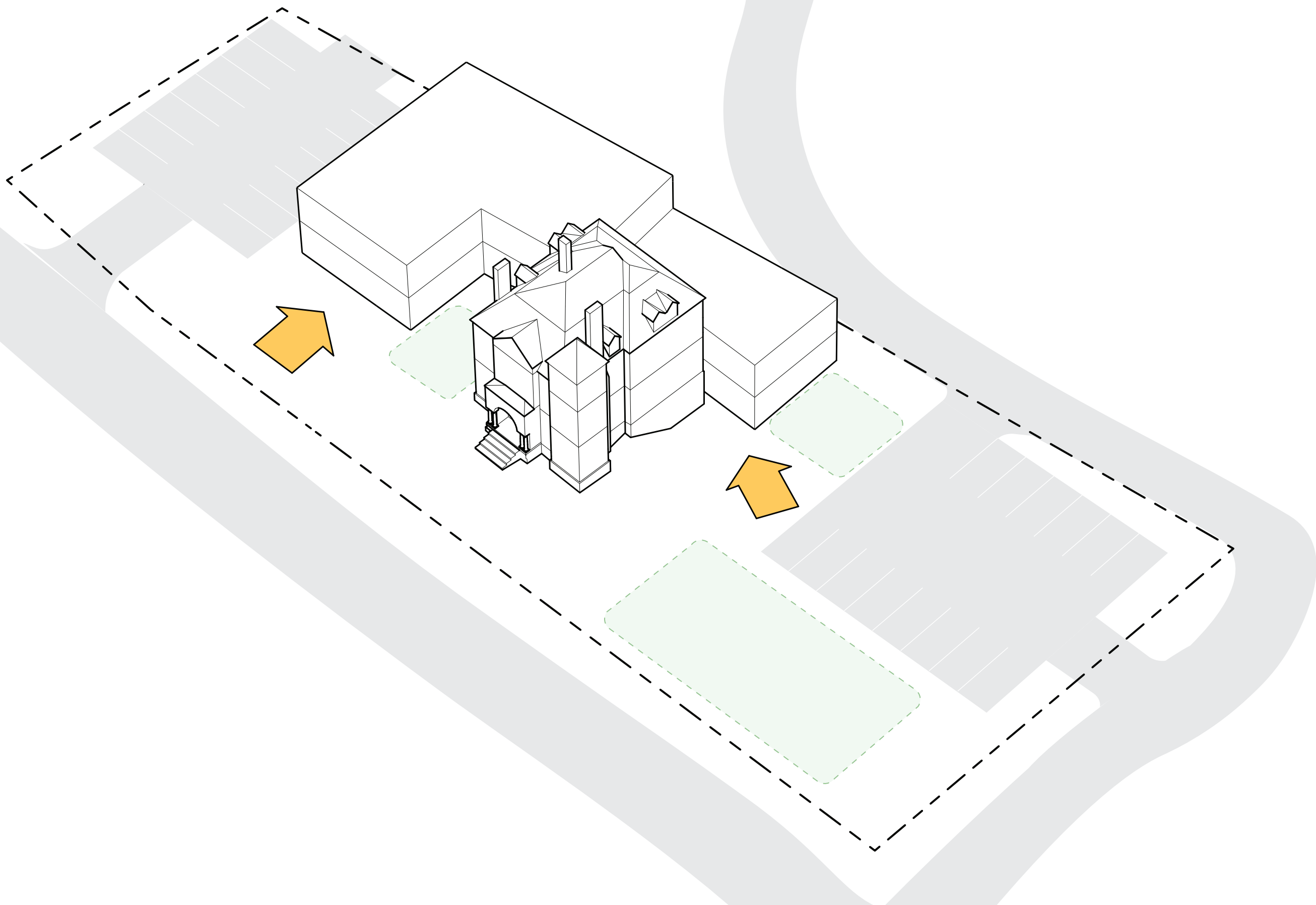
North Scheme -
Step 3 - Reducing Street Frontage



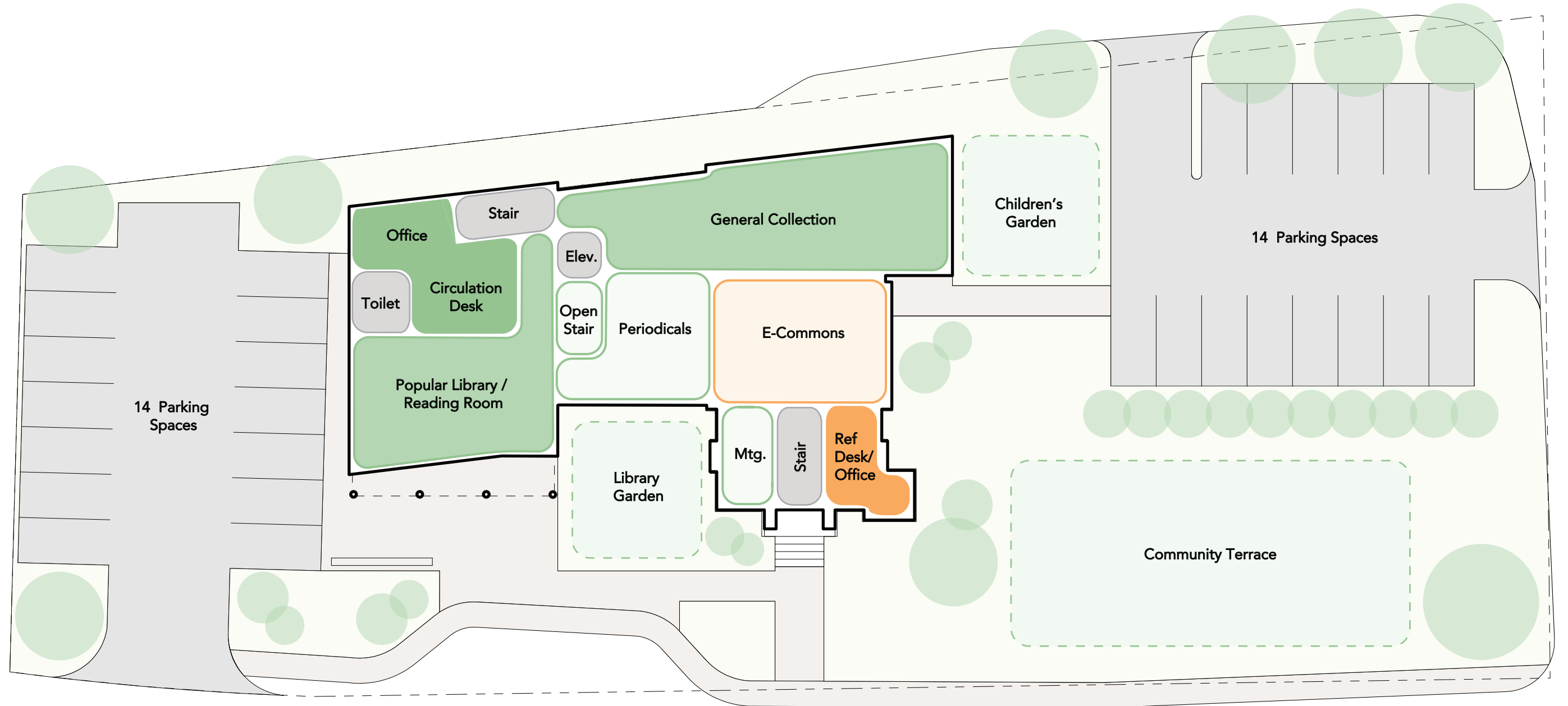
North Scheme -
Step 4 - Connecting to South Parking Lot



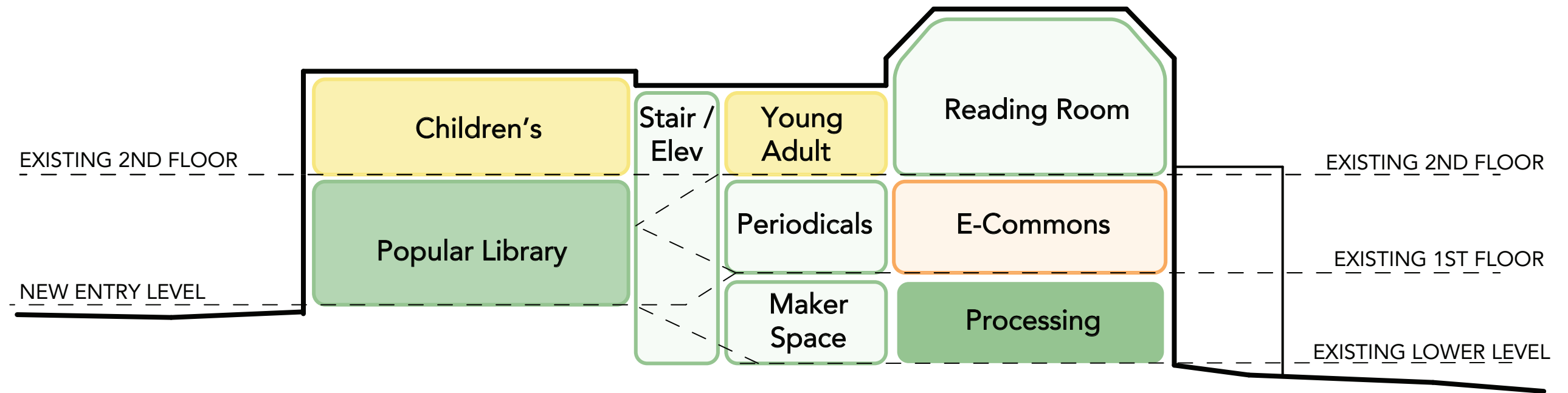
North Scheme -
Step 5 - Connecting to Community



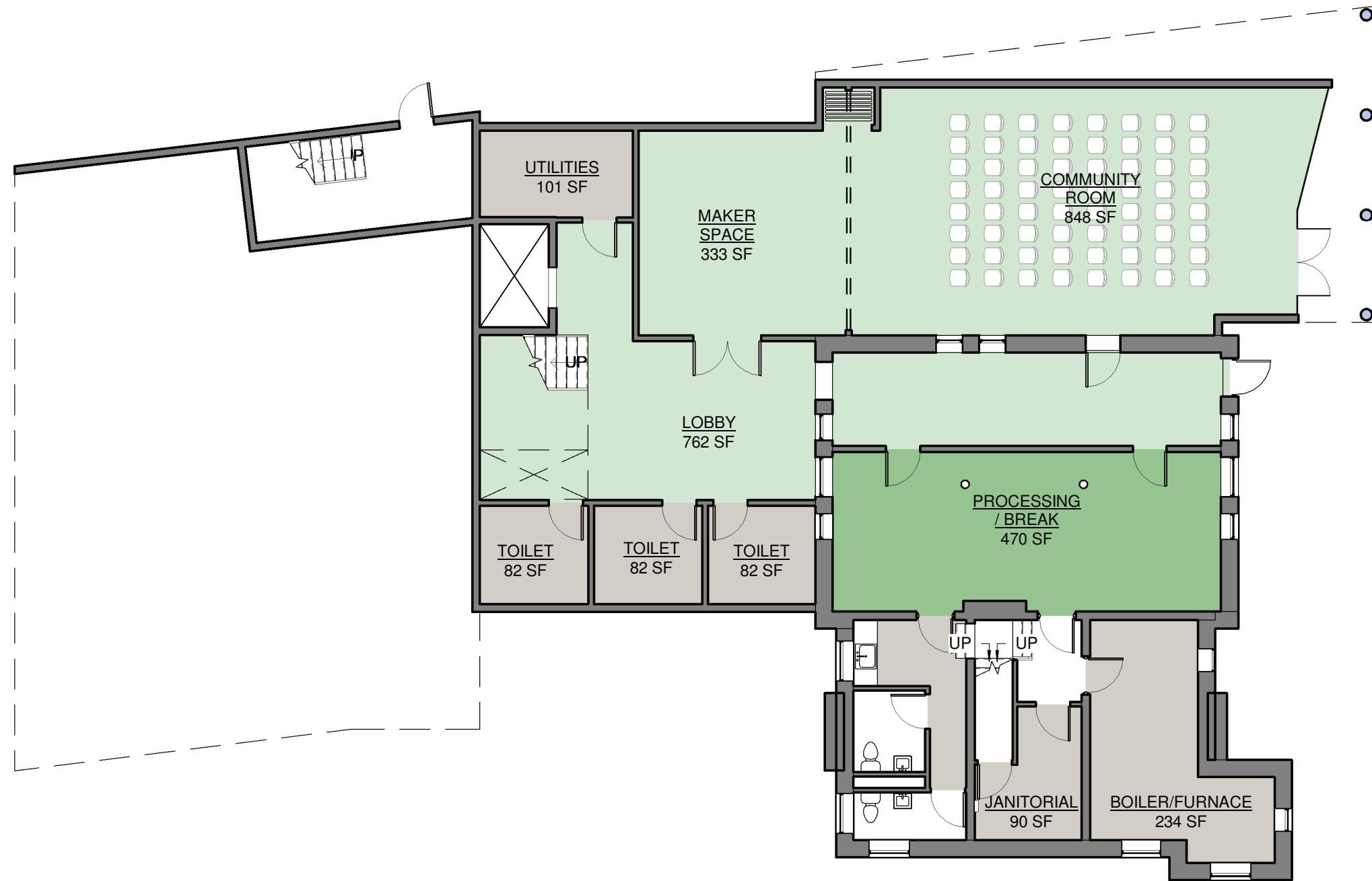
North Scheme - Site Plan



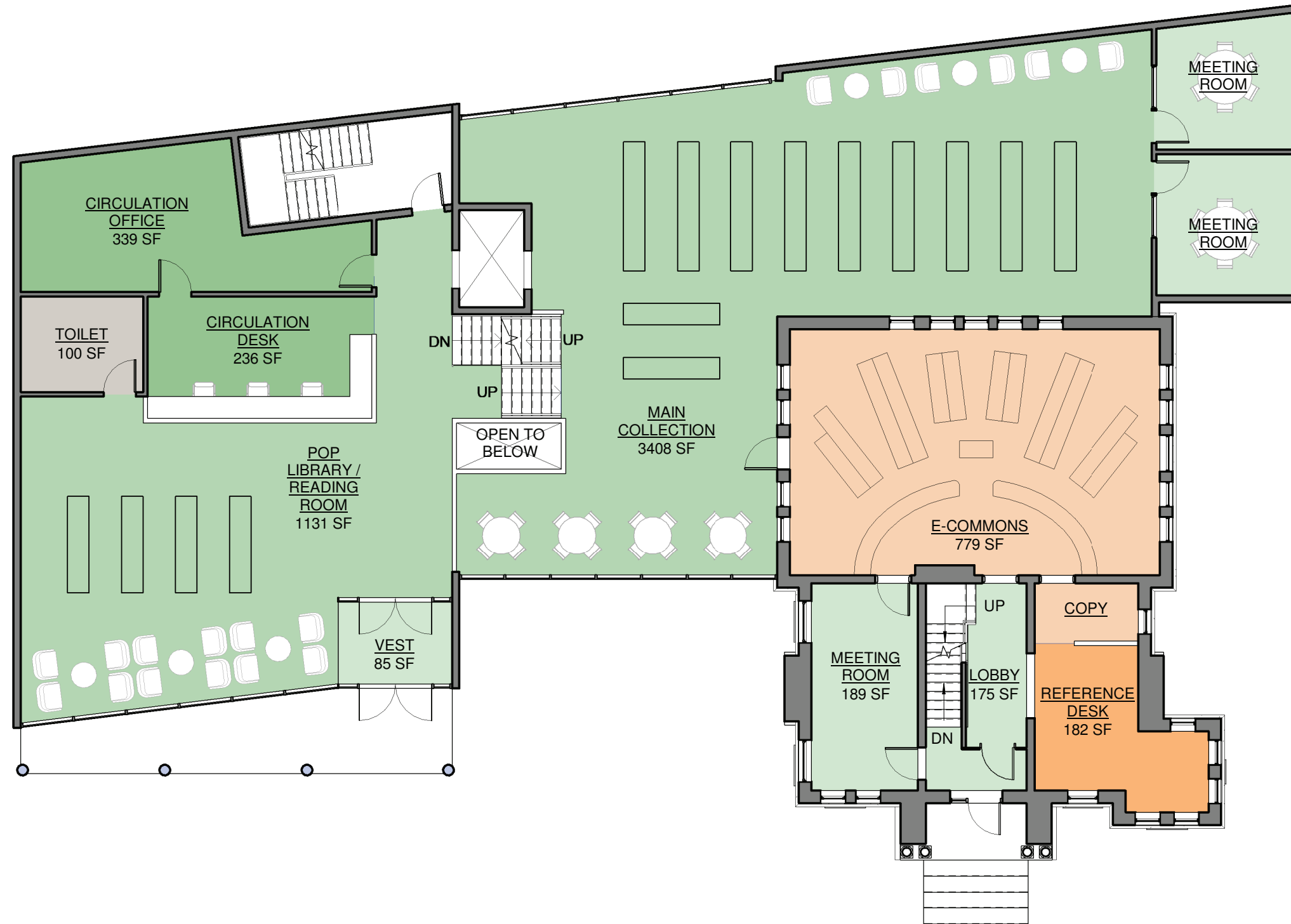
North Scheme - Diagrammatic Section



North Scheme - Lower Level Floor Plan



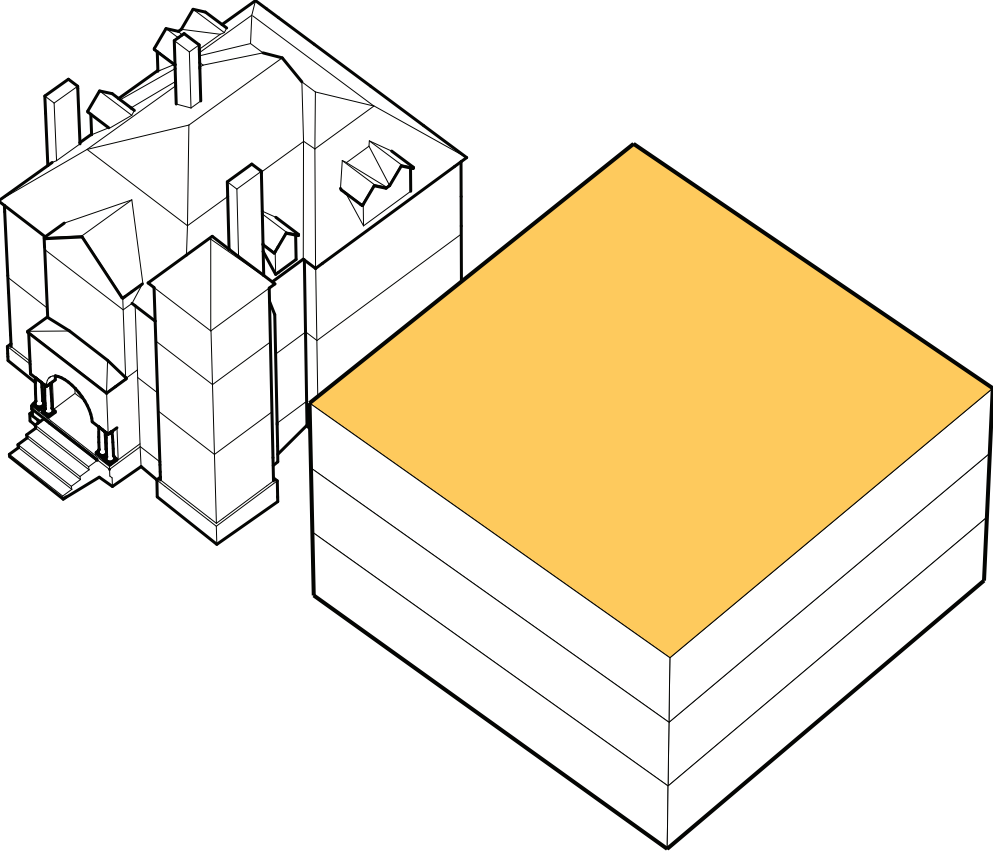
North Scheme - First Floor Plan



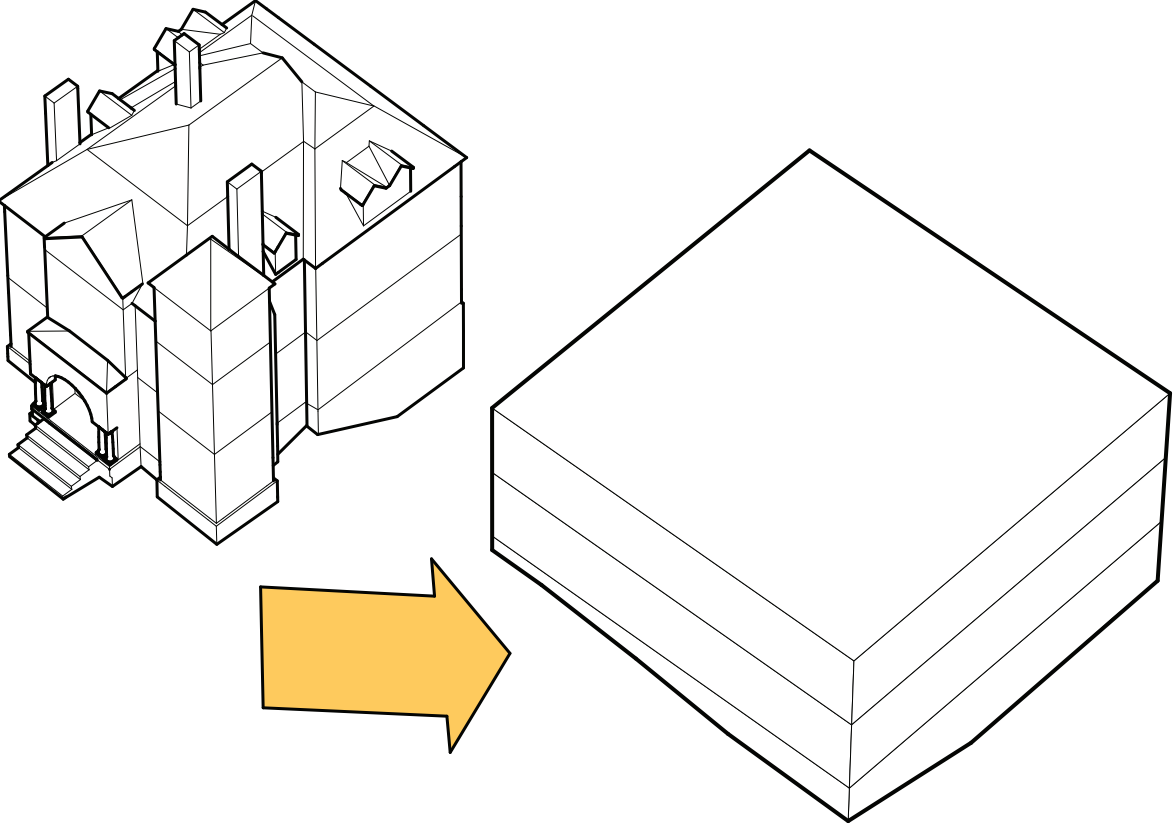
North Scheme - Second Floor Plan



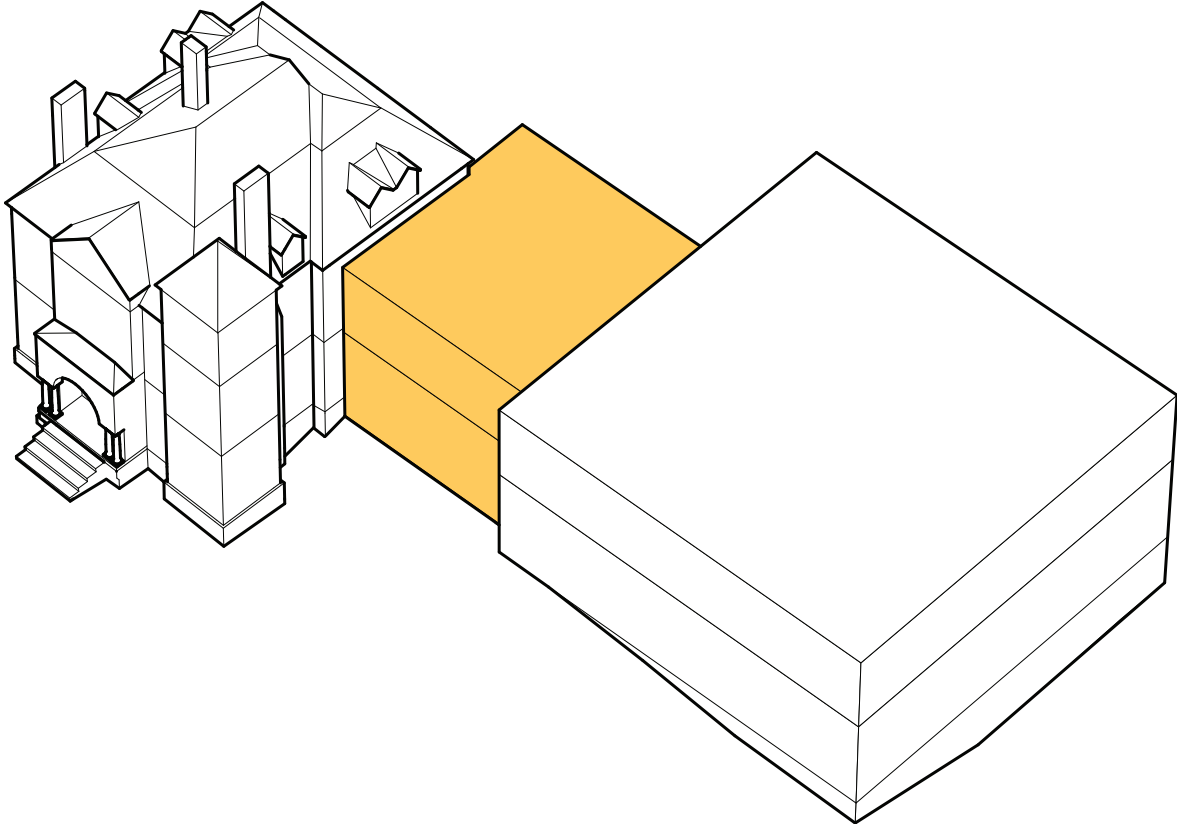
South Scheme -
Step 1 - Required Square Footage



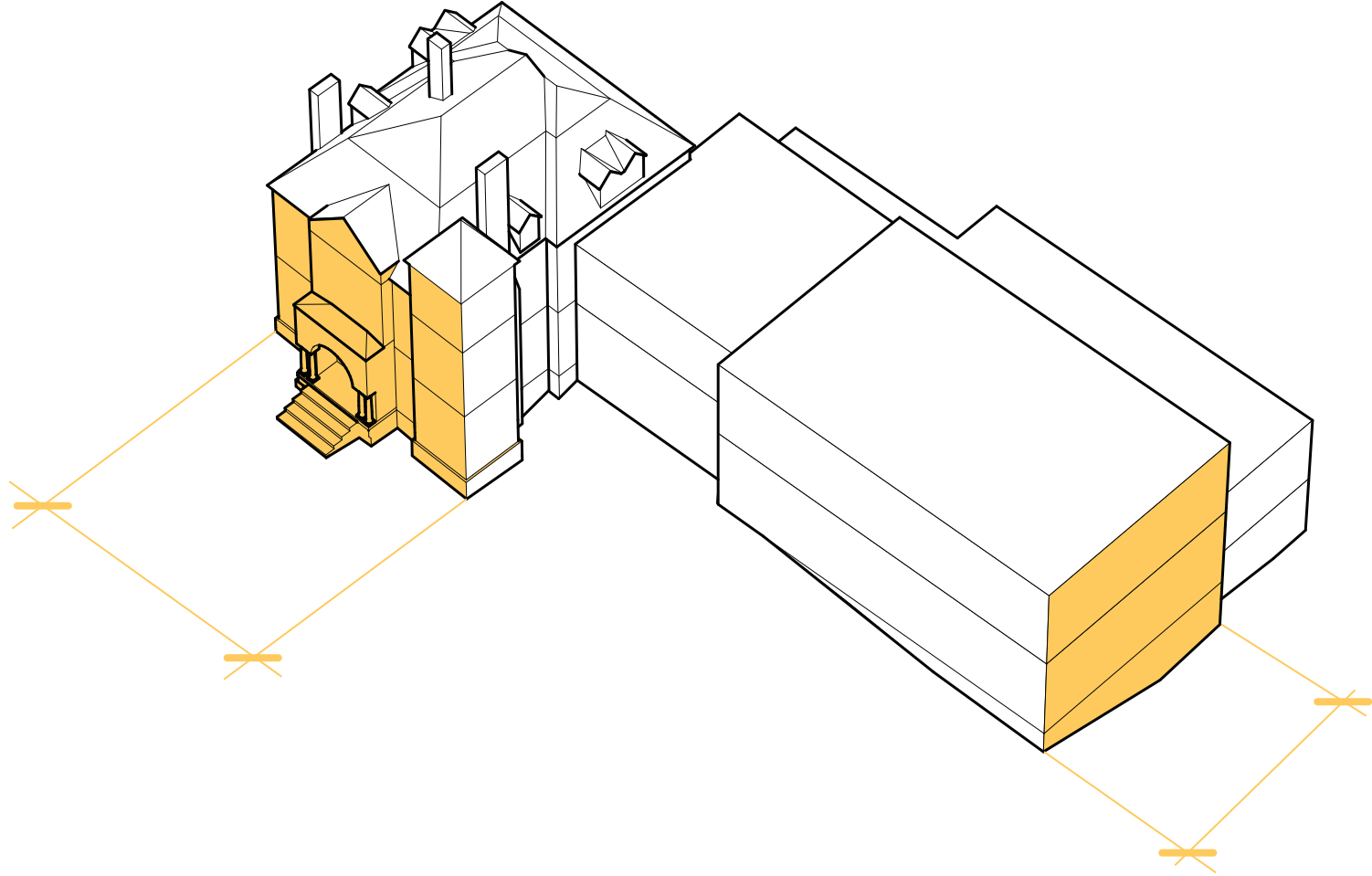
South Scheme -
Step 2 - Moving Mass Down the Site



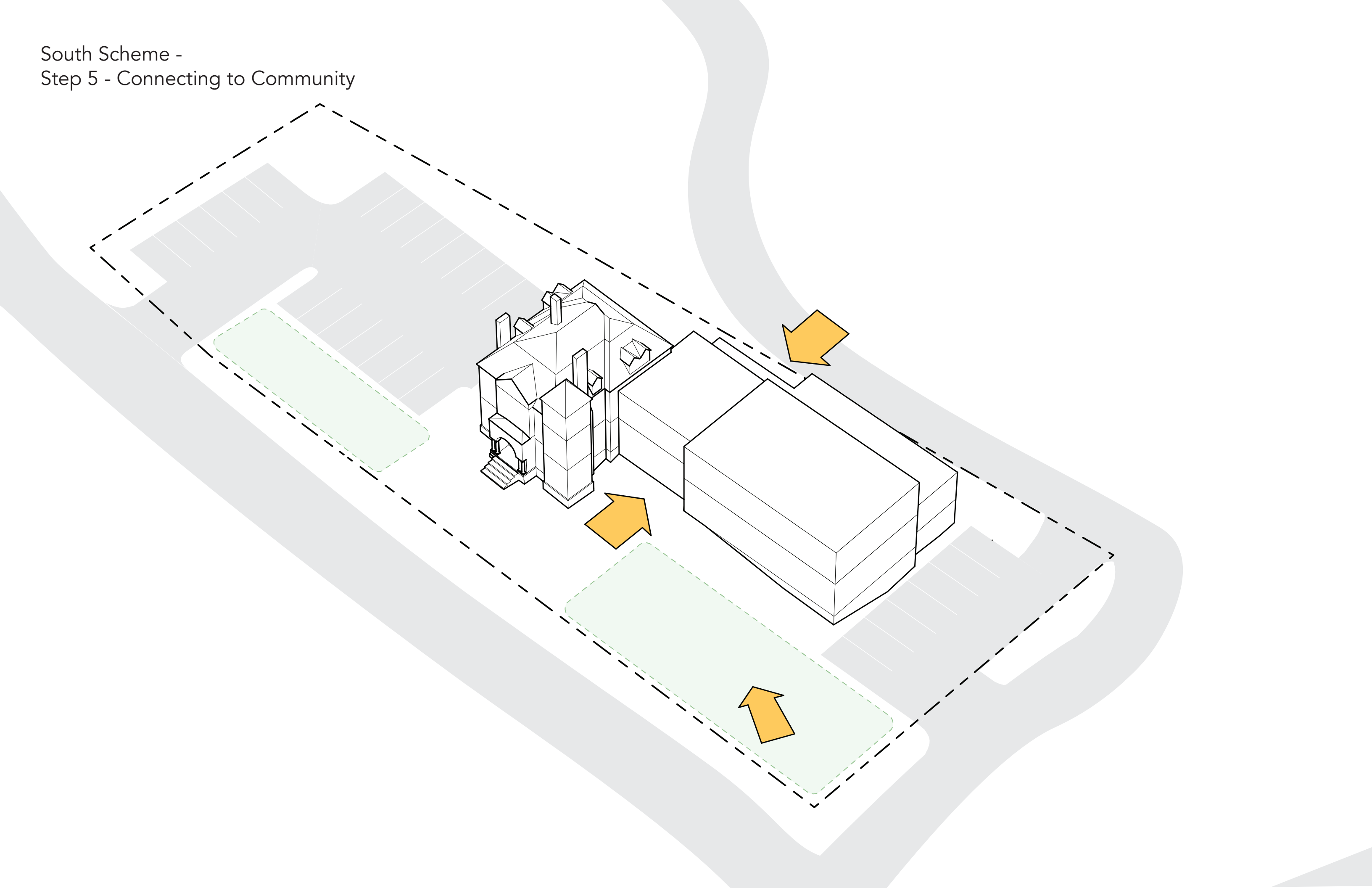
South Scheme -
Step 3 - Connecting to Historic Building



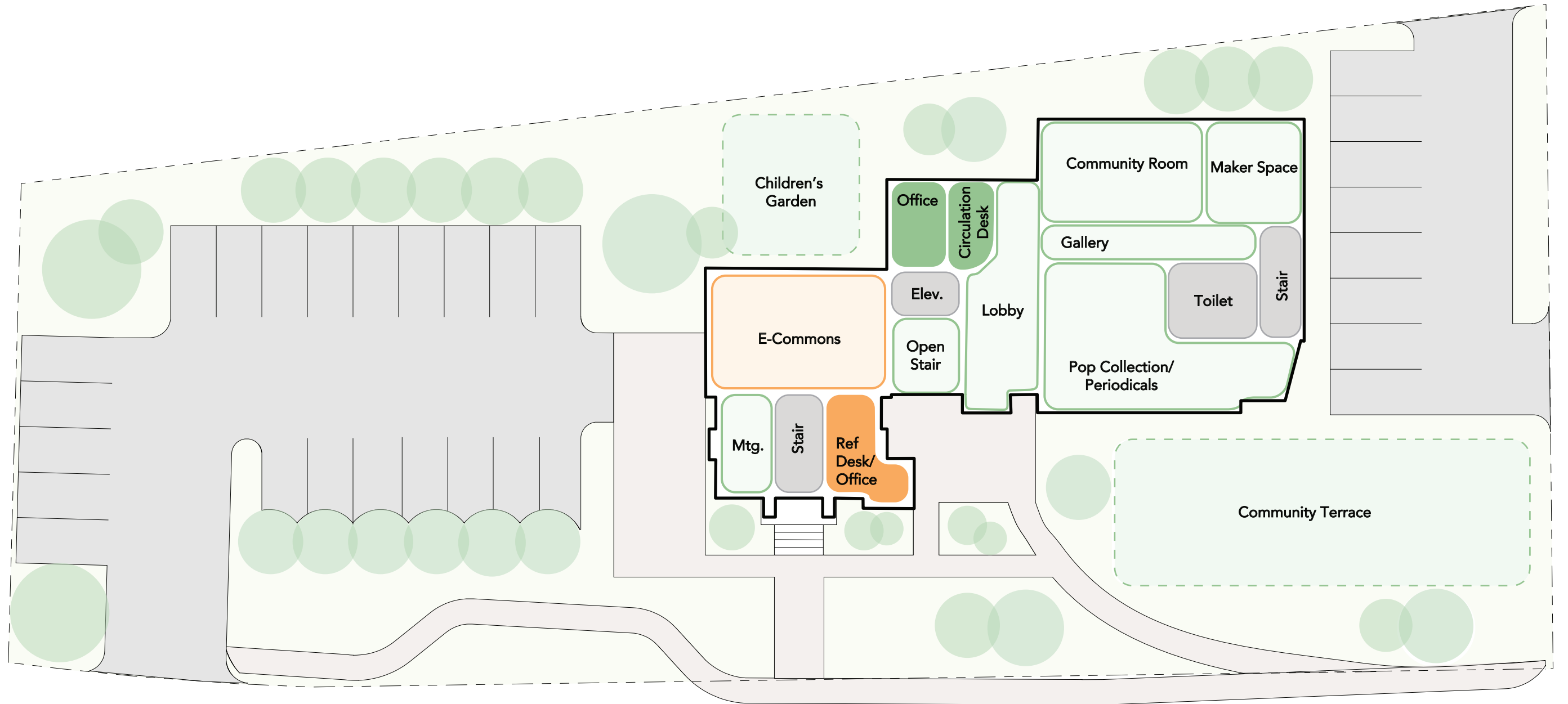
South Scheme -
Step 4 - Scaling to Historic Building



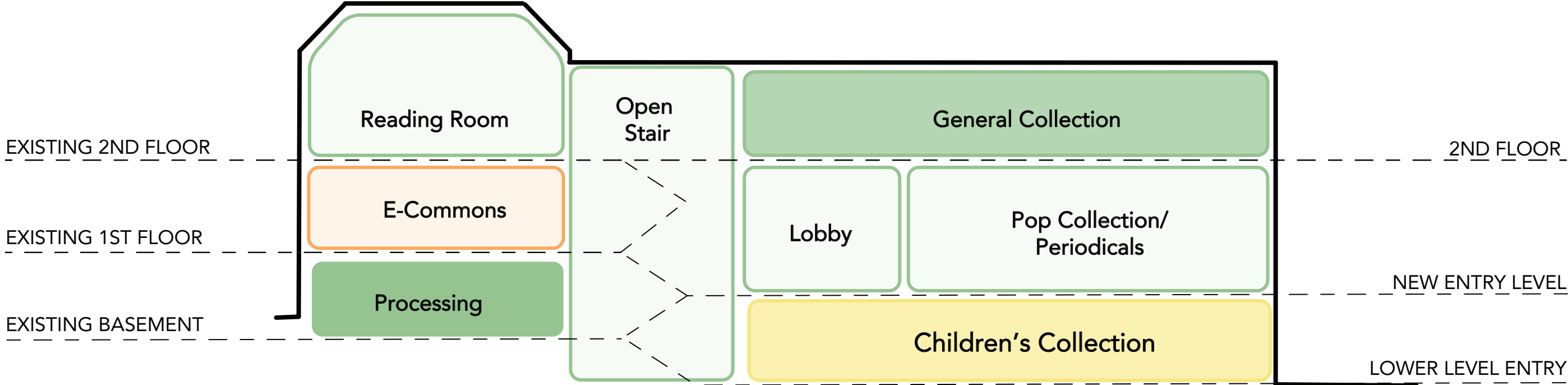
South Scheme -
Step 5 - Connecting to Community



South Scheme - Site Plan



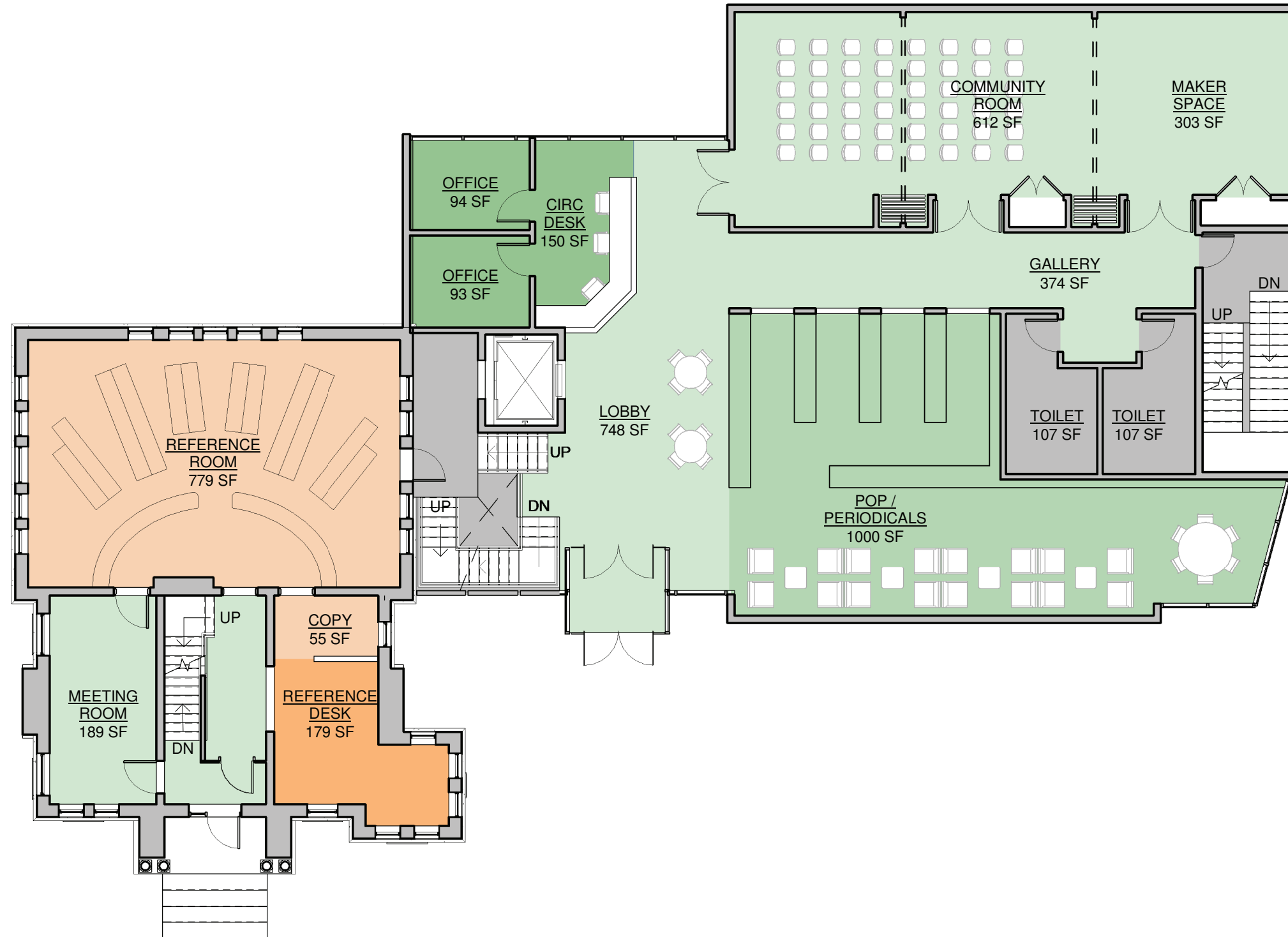
South Scheme - Diagrammatic Section



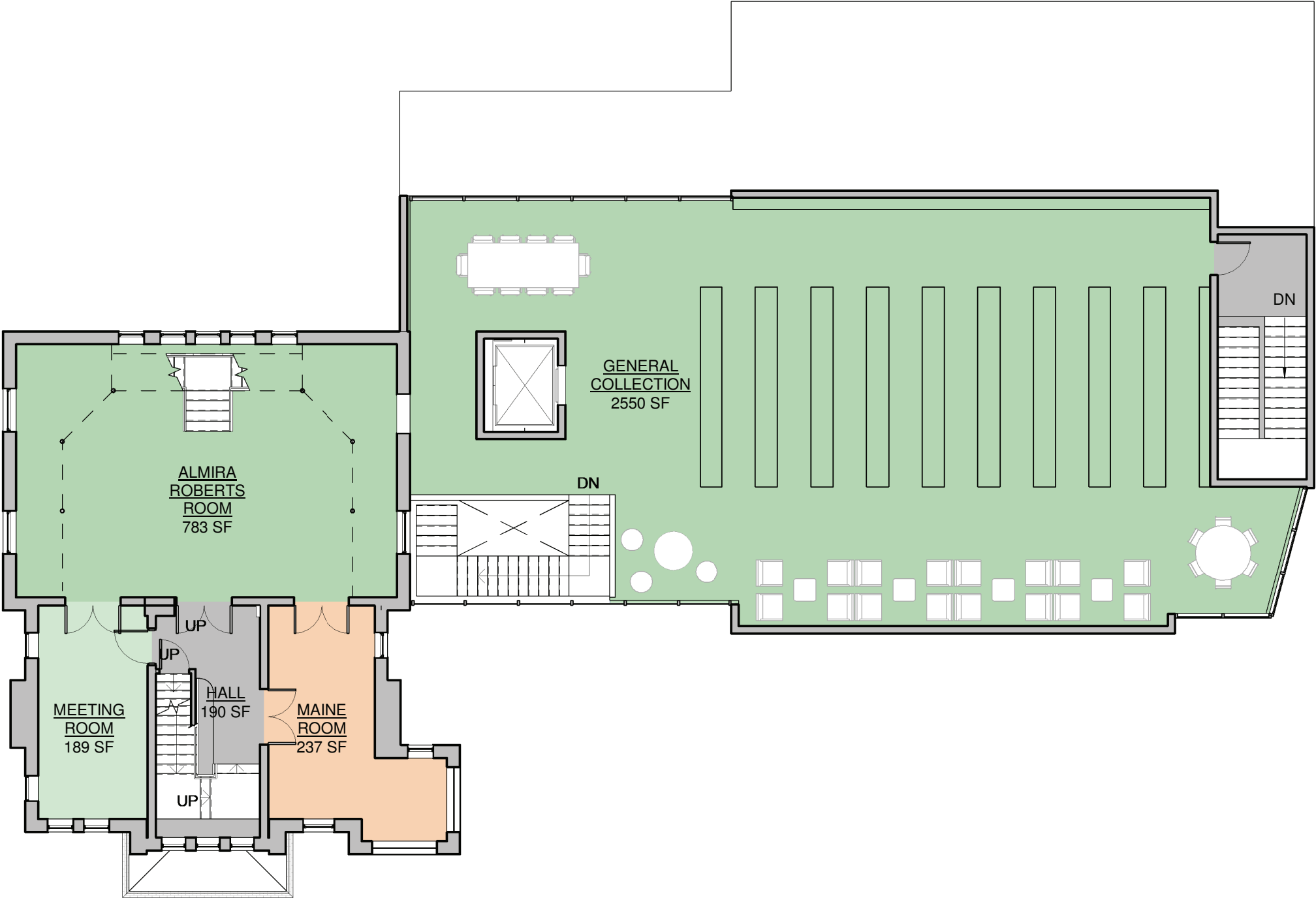
South Scheme - Lower Level Floor Plan



South Scheme - First Floor Plan



South Scheme - Second Floor Plan







RICE PUBLIC LIBRARY

RICE PUBLIC LIBRARY

1888

N S