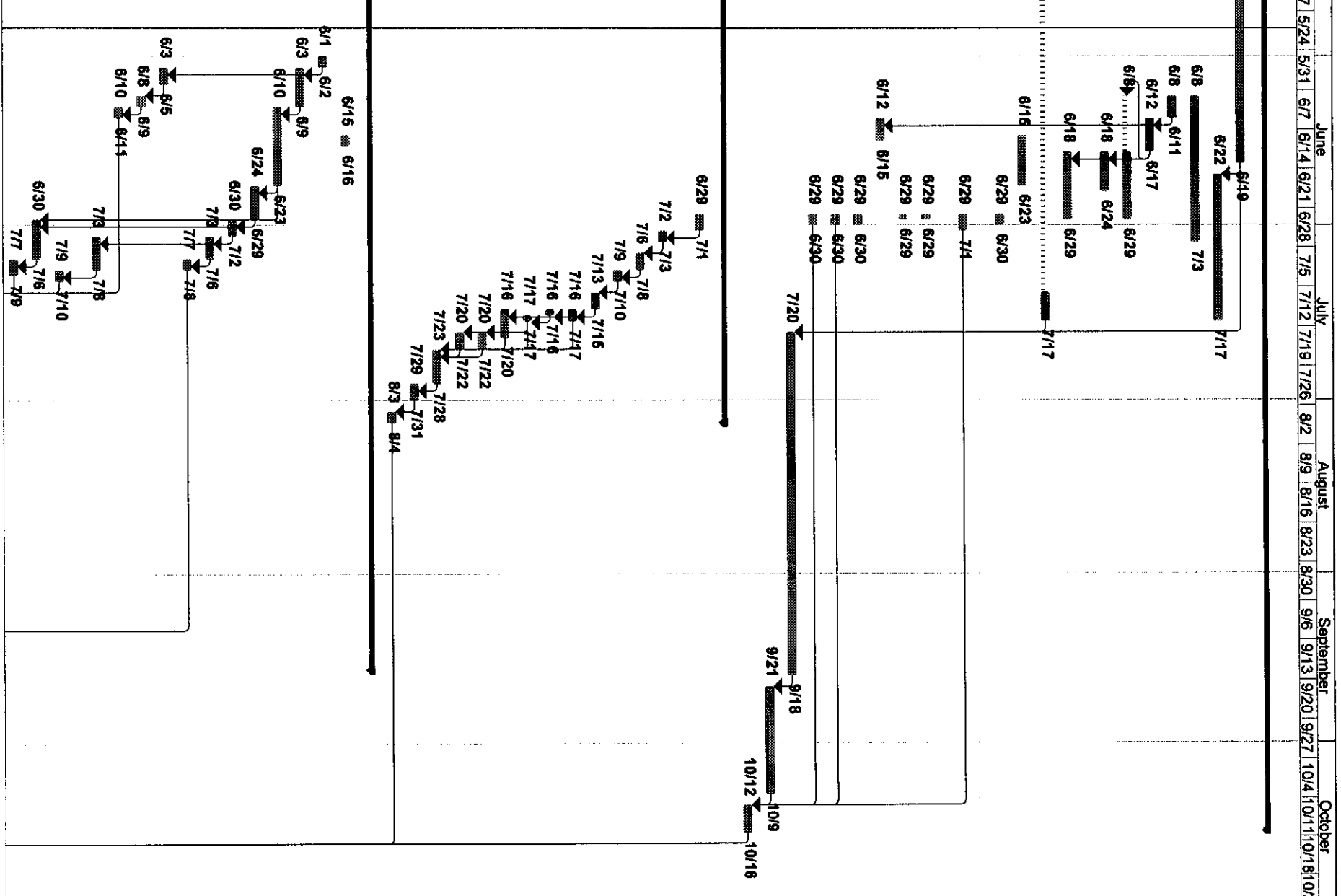


ID	Task Name	Duration	Start	Finish	April	May	June	July	August	September	October	November	December
245	FAB DEL	85 days	Thu 8/21/14	Wed 12/17/14									
344	NEW SEPTAGE RECEIVING	323 days	Wed 7/23/14	Fri 10/16/15									
348	Fab and deliver mcc	65 days	Mon 3/23/15	Fri 6/19/15									
349	Install mcc and startup	20 days	Mon 6/22/15	Fri 7/17/15									
361	SET SEPTAGE RECEIVING EQUIPMENT	20 days	Mon 6/8/15	Fri 7/3/15									
364	SET AERATION BLOWERS	4 days	Mon 6/8/15	Thu 6/11/15									
365	SET SLUDGE PUMPS	4 days	Fri 6/12/15	Wed 6/17/15									
366	INSTALL SLUDGE PIPING @ SST	8 days	Mon 6/8/15	Mon 6/29/15									
367	INSTALL SLUDGE PIPING @ PR	5 days	Thu 6/18/15	Wed 6/24/15									
368	INSTALL AIR PIPING	8 days	Thu 6/18/15	Mon 6/29/15									
369	ROUGH IN ELECTRICAL	5 days	Mon 2/9/15	Fri 7/17/15									
370	INSTALL FANS	7 days	Mon 6/15/15	Tue 6/23/15									
371	INSTALL FLOOD SWITCH ALARM	2 days	Mon 6/29/15	Tue 6/30/15									
372	INSTALL COPPER WATER LINE	3 days	Mon 6/29/15	Wed 7/1/15									
373	INSTALL DEHUMIDIFIER	1 day	Mon 6/29/15	Mon 6/29/15									
374	INSTALL ALUMINUM LADDER	1 day	Mon 6/29/15	Mon 6/29/15									
375	INSTALL BLOWER GAUGES	2 days	Fri 6/12/15	Mon 6/15/15									
376	INSTALL PUMP GAUGES	2 days	Mon 6/29/15	Tue 6/30/15									
377	INSTALL 8" ODOR PIPE	2 days	Mon 6/29/15	Tue 6/30/15									
378	INSTALL 2" CHLORINE PIPE	2 days	Mon 6/29/15	Tue 6/30/15									
379	Final electrical tyins	45 days	Mon 7/20/15	Fri 9/18/15									
380	FINAL INSTRUMENTATION	15 days	Mon 9/21/15	Fri 10/9/15									
381	START UP NEW EQUIPMENT	5 days	Mon 10/12/15	Fri 10/16/15									
385	NEW GARAGE	81 days	Tue 4/14/15	Tue 8/4/15									
388	SET STRUCTURAL FRAMES AND PURLINS	3 days	Mon 6/29/15	Wed 7/1/15									
399	INSTALL ROOF	2 days	Thu 7/2/15	Fri 7/3/15									
400	INSTALL SIDING	3 days	Mon 7/6/15	Wed 7/8/15									
401	INSTALL METAL CEILING	2 days	Thu 7/9/15	Fri 7/10/15									
402	INSTALL WALL PANELS	3 days	Mon 7/13/15	Wed 7/15/15									
403	INSTALL TRANSLUCENT PANELS	2 days	Thu 7/16/15	Fri 7/17/15									
404	INSTALL HM DOOR AND FRAME	1 day	Thu 7/16/15	Thu 7/16/15									
405	INSTALL DOOR HARDWARE	1 day	Fri 7/17/15	Fri 7/17/15									
406	OH DOORS	3 days	Mon 7/20/15	Mon 7/20/15									
407	EXHAUST FAN	3 days	Mon 7/20/15	Wed 7/22/15									
408	LOUVERS AND DAMPERS	3 days	Mon 7/20/15	Wed 7/22/15									
409	ELECTRIC ROUGH IN	4 days	Thu 7/23/15	Wed 7/28/15									
410	FIXTURES	3 days	Wed 7/29/15	Fri 7/31/15									
411	START UP BUILDING	2 days	Mon 8/3/15	Tue 8/4/15									
415	HEADWORKS	302 days?	Wed 7/23/14	Thu 9/17/15									
417	RELOCATE BLOWERS	2 days	Mon 6/15/15	Tue 6/16/15									
422	CLEAN AERATED GRIT CHAMBER	2 days	Mon 6/1/15	Tue 6/2/15									
423	RESTORE ANY CONCRETE DEFECTS	5 days	Wed 6/3/15	Tue 6/9/15									
424	INSTALL NEW GRIT CLASSIFIER	10 days	Wed 6/10/15	Tue 6/23/15									
425	INSTALL NEW GRIT PUMP	4 days	Wed 6/24/15	Mon 6/29/15									
428	INSULATE AIR LINE	3 days	Tue 6/30/15	Thu 7/2/15									
429	INSULATE AIR LINE	2 days	Fri 7/3/15	Mon 7/6/15									
430	HEAT TRACE AIR LINES	2 days	Tue 7/7/15	Wed 7/8/15									
433	RELOCATE 6" CONCENTRATE LINE	3 days	Wed 6/3/15	Fri 6/5/15									
434	INSULATE CONCENTRATE LINE	2 days	Mon 6/8/15	Tue 6/9/15									
435	HEAT TRACE CONCENTRATE LINE	2 days	Wed 6/10/15	Thu 6/11/15									
436	INSTALL CLASSIFIER STRUCTURAL FRAMING	4 days	Fri 7/3/15	Wed 7/8/15									
437	INSTALL ALUMINUM GRATING	2 days	Thu 7/9/15	Fri 7/10/15									
438	ROUGH IN ELECTRICAL	5 days	Tue 6/30/15	Mon 7/6/15									
439	INSTALL NEW PANELS	3 days	Tue 7/7/15	Thu 7/9/15									



ID	Task Name	Duration	Start	Finish	April	May	June	July	August	September	October	November	December
440	REPLACE EFFLUENT WALL	2 days	Mon 7/13/15	Tue 7/14/15									
441	FINISH ELECTRIC TY INS	44 days	Mon 7/13/15	Thu 9/10/15				7/13	7/13	9/10			
442	START UP & TEST NEW GRIT EQUIPMENT	5 days	Fri 9/11/15	Thu 9/17/15				7/13	7/13	9/10			
446	Control Building	37 days	Mon 8/18/15	Tue 7/7/15									
447	REMOVE DOORS AND FRAMES	4 days	Mon 5/18/15	Mon 5/21/15									
448	REMOVE WINDOWS	6 days	Mon 6/8/15	Mon 6/15/15									
449	REPAIR & REPOINT MASONRY	5 days	Tue 6/16/15	Mon 6/22/15									
450	INSTALL NEW DOORS	4 days	Wed 6/20/15	Fri 6/26/15									
451	INSTALL NEW WINDOWS	6 days	Tue 6/23/15	Tue 6/30/15									
452	REMOVE AND REINSTALL OH DOORS	3 days	Tue 6/23/15	Thu 6/25/15									
453	CAULK OPENINGS	3 days	Wed 7/1/15	Fri 7/3/15									
454	TOUCH UP PAINT	2 days	Mon 7/6/15	Tue 7/7/15									
458	BLOWER BUILDING	53 days	Mon 6/22/15	Wed 9/2/15									
459	CUT MASONRY OPENINGS	5 days	Mon 6/22/15	Fri 6/26/15									
460	SET NEW FAN	4 days	Mon 6/29/15	Thu 7/2/15									
461	SET NEW LOUVERS & DAMPERS	3 days	Mon 6/29/15	Wed 7/1/15									
462	REPLACE 16" VALVE OPERATORS	4 days	Mon 6/29/15	Thu 7/2/15									
463	INSTALL NEW BLOWER	2 days	Thu 7/2/15	Fri 7/3/15									
464	AIR PIPING	3 days	Mon 7/6/15	Wed 7/8/15									
465	NEW ELECTRIC	35 days	Thu 7/9/15	Wed 8/26/15									
466	NEW ENCLOSURES	10 days	Mon 7/6/15	Fri 7/17/15									
467	START UP NEW EQUIPMENT	5 days	Thu 8/27/15	Wed 9/2/15									
471	EQUALIZATION TANK	157 days	Mon 11/10/14	Tue 6/16/15									
478	MISC HANDRAIL REPAIRS	2 days	Mon 6/15/15	Tue 6/16/15									
480	ALTERNATE #1	222 days	Wed 7/23/14	Thu 5/28/15									
486	RESTORE SITE	4 days	Mon 5/25/15	Thu 5/28/15									
489	PUMPSTATION #9	274 days	Wed 7/23/14	Mon 8/10/15									
493	EXTEND GENERATOR PAD	4 days	Mon 7/27/15	Thu 7/30/15									
494	SET RELOCATED GENERATOR	4 days	Fri 7/31/15	Wed 8/5/15									
495	ADD DAY TANK	3 days	Thu 8/6/15	Mon 8/10/15									
496	REPAVE	2 days	Fri 8/29/14	Mon 9/1/14									
497	RESTORE SITE	2 days	Tue 9/2/14	Wed 9/3/14									
507	PUMP STATION #16	34 days	Wed 7/23/14	Mon 9/8/14									
512	REPAVE	2 days	Thu 9/4/14	Fri 9/5/14									
513	SITE RESTORATION	1 day	Mon 9/8/14	Mon 9/8/14									
516	PUMP STATION #18	37 days	Wed 7/23/14	Thu 9/11/14									
521	REPAVE	2 days	Tue 9/9/14	Wed 9/10/14									
522	SITE RESTORATION	1 day	Thu 9/11/14	Thu 9/11/14									
525	PUMP STATION #21	40 days?	Wed 7/23/14	Tue 9/16/14									
529	REPAVE	2 days	Fri 9/12/14	Mon 9/15/14									
530	RESTORE SITE	1 day	Tue 9/16/14	Tue 9/16/14									
533	WWTF GENERAL SITEWORK	283 days	Tue 8/5/14	Thu 9/3/15									
540	EXTEND GENERATOR PAD	4 days	Mon 7/27/15	Thu 7/30/15									
541	TRANSPORT EXISTING GENERATOR	1 day	Fri 7/31/15	Fri 7/31/15									
542	SET NEW GENERATOR	3 days	Mon 8/3/15	Wed 8/5/15									
543	SET MISC ELECTRIC SITE PANELS	3 days	Thu 8/14/14	Mon 8/18/14									
544	PULL SITE WIRE	5 days	Tue 8/19/14	Mon 8/25/14									
545	CONCRETE PAVERS	3 days	Thu 8/6/15	Mon 8/10/15									
546	BOLLARDS	3 days	Thu 8/6/15	Mon 8/10/15									
547	SPREAD LOAM	5 days	Tue 8/11/15	Mon 8/17/15									
548	PAVEMENT	10 days	Tue 8/18/15	Mon 8/31/15									
549	FERTILIZE AND SEED	3 days	Tue 9/1/15	Thu 9/3/15									
552	TOTAL SUBSTANTIAL COMPLETION	2 days	Mon 10/9/15	Tue 10/20/15									

Task	Rolled Up Critical Task	Project Summary	Inactive Summary	Start-only	E
Critical Task	Rolled Up Milestone	Group By Summary	Manual Task	Finish-only	1
Milestone	Rolled Up Progress	Inactive Task	Duration-only	Progress	
Summary	Split	Inactive Task	Manual Summary Rollup	Deadline	
Rolled Up Task	External Tasks	Inactive Milestone	Manual Summary		