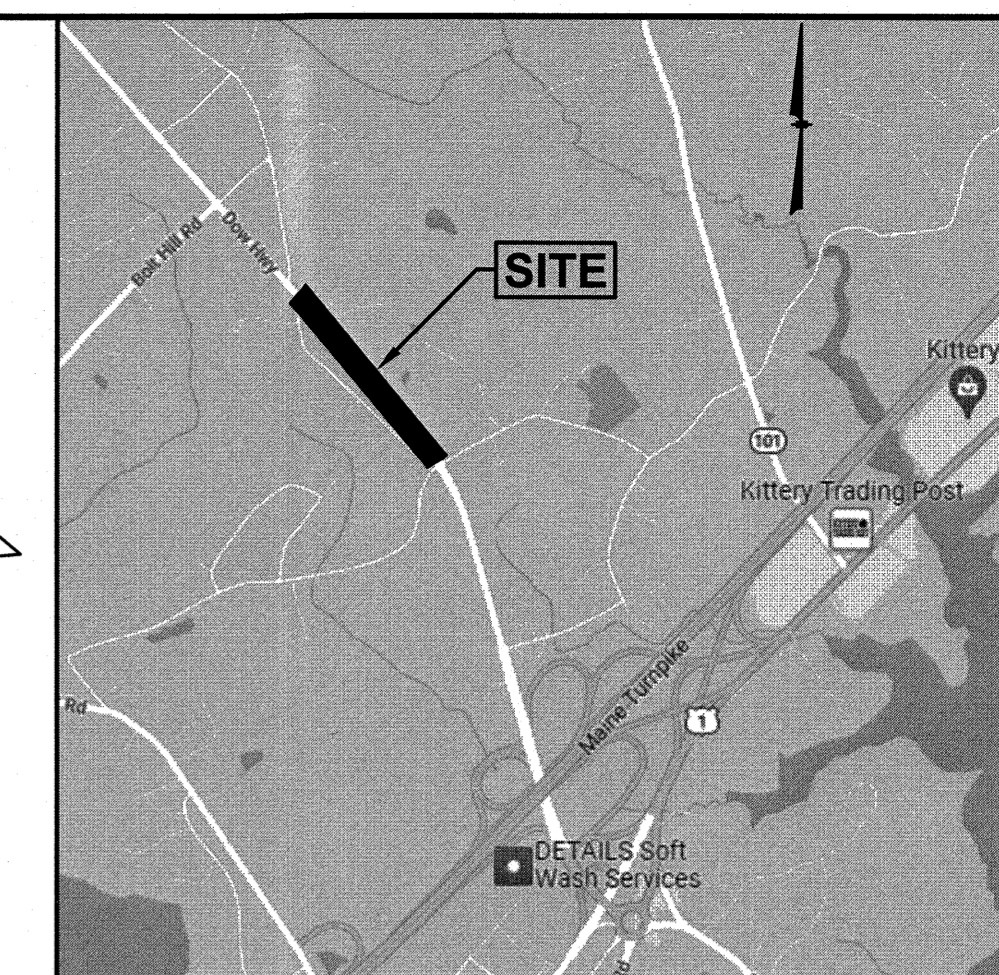
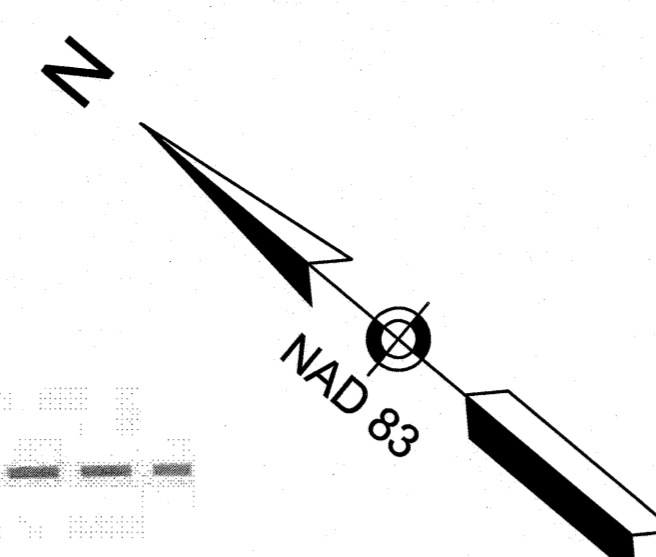
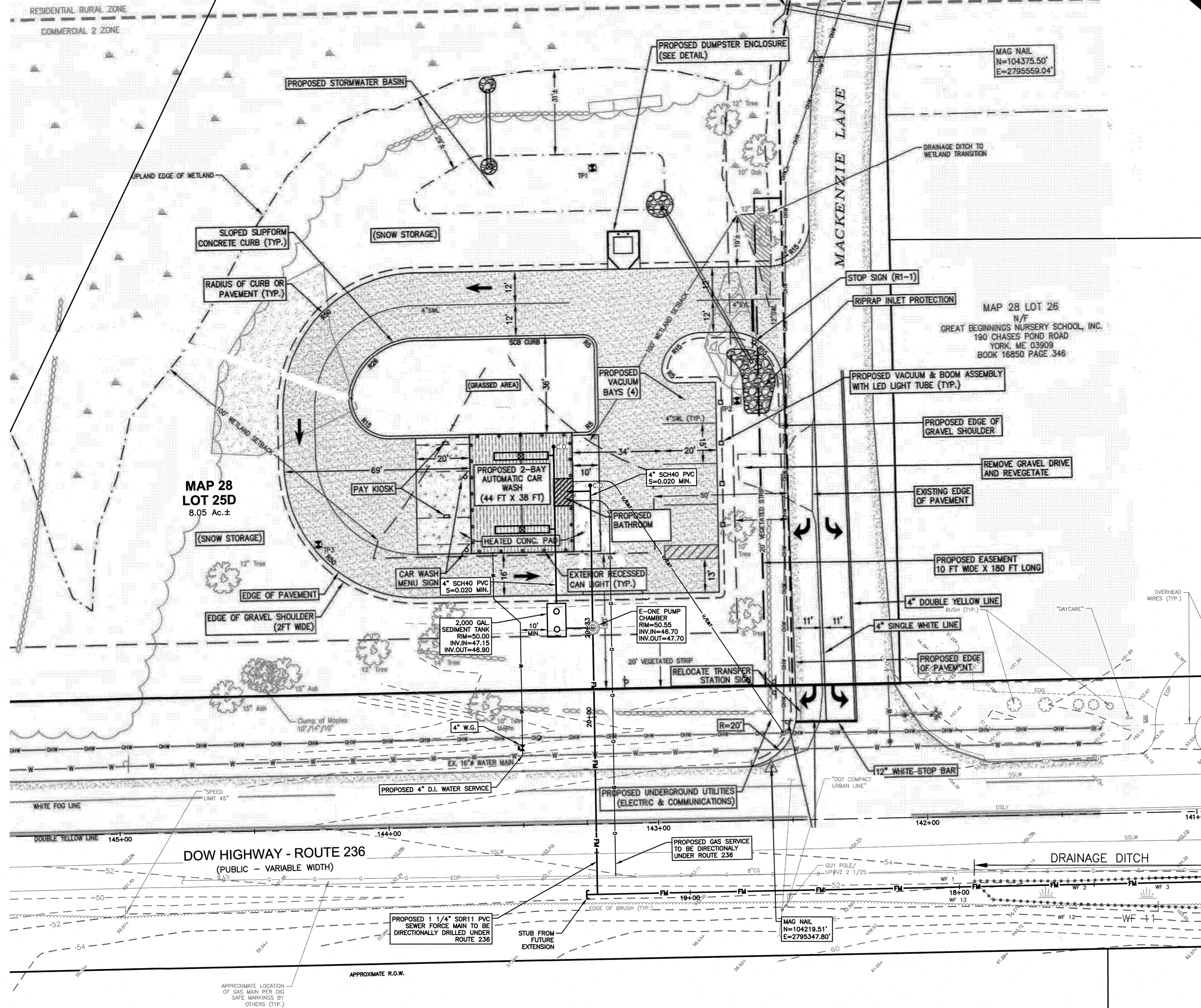


LEGEND

- CCB CAPE COD BERM
- DSLY DOUBLE SOLID LINE YELLOW
- SSLY SINGLE SOLID LINE YELLOW
- GAS LINE
- STOCKADE FENCE
- TREE
- TREELINE
- SIGN
- SPOT ELEVATION
- SEWER MANHOLE
- GAS VALVE
- WETLAND LINE



LOCATION MAP
(NOT TO SCALE)

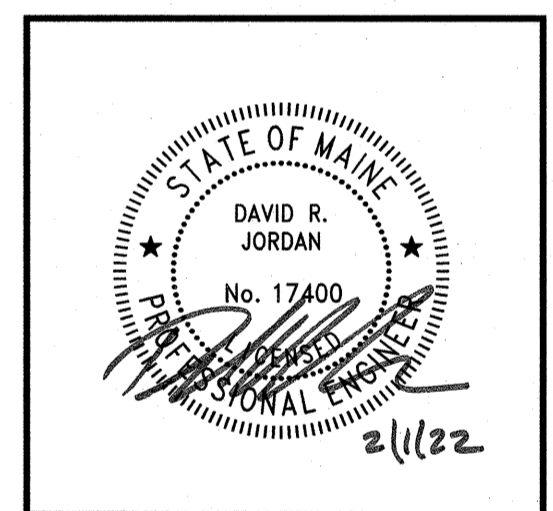
NOTES:

- 1) THE PURPOSE OF THIS PLAN IS TO AMEND THE APPROVED SITE PLAN TO SHOW REVISED PROPOSED UTILITY CONNECTIONS TO THE PROPOSED CAR WASH AND THE CONSTRUCTION OF A NEW SEWER FORCE MAIN.
- 2) OWNER OF RECORD:
WAEBAK, LLC
44 MERRIMAC STREET
NEWBURYPORT, MA 01950
Y.C.R.D. BOOK 18669 PAGE 915
- 3) BASE PLAN INFORMATION TAKEN FROM PLANS TITLED "SITE PLAN APPLICATION, KITTERY CAR WASH, ROUTE 236, KITTERY, ME," PREPARED FOR JOHN T. BRENNAN, JR., PREPARED BY TIDEWATER ENGINEERING, DATED MARCH, 2020 LAST REVISED 10/6/20.
- 4) THE BASIS OF BEARING IS MAINE STATE PLAN (NAD83) WEST ZONE, US FOOT. ELEVATIONS AND TOPOGRAPHY SHOWN HEREON CORRESPOND TO NAVD83.
- 5) THE BOUNDARY SHOWN HEREON IS PER SHEET C2. SEE SHEET C2 FOR FURTHER DETAIL.
- 6) UTILITY LOCATIONS SHOWN ON THESE PLANS ARE APPROXIMATE AND MAY NOT BE ENTIRELY ACCURATE OR COMPLETE. THE CONTRACTOR SHALL BE RESPONSIBLE FOR LOCATING AND PROTECTING ALL UTILITIES, BOTH OVERHEAD AND UNDERGROUND, THROUGHOUT THE COURSE OF THE WORK. THIS INFORMATION IS NOT TO BE RELIED ON AS BEING EXACT OR COMPLETE. THE CONTRACTOR MUST CALL THE APPROPRIATE UTILITY COMPANY AND DIG SAFE AT LEAST 72 HOURS PRIOR TO ANY EXCAVATION TO REQUEST EXACT FIELD LOCATION OF UTILITIES.
- 7) THE CONTRACTOR SHALL FIELD VERIFY ALL EXISTING CONDITIONS AND DIMENSIONS, AND REPORT ANY DISCREPANCIES TO TIDEWATER ENGINEERING & SURVEYING, INC. THE CONTRACTOR SHALL PROCEED WITH THE WORK ONLY AFTER ANY DISCREPANCIES HAVE BEEN RESOLVED BY TIDEWATER ENGINEERING & SURVEYING, INC.
- 8) THE CONTRACTOR SHALL, ON A DAILY BASIS, THOROUGHLY SECURE ALL EXCAVATIONS UPON COMPLETION OF OPERATIONS IN THE IMMEDIATE AREA OF EXCAVATION.
- 9) THE CONTRACTOR IS RESPONSIBLE FOR OBTAINING ALL LOCAL, STATE AND FEDERAL PERMITS REQUIRED FOR THE CONSTRUCTION OF THE PROPOSED DEVELOPMENT SHOWN WITHIN THIS PLAN SET. THE CONTRACTOR SHALL NOT PROCEED WITH SAID WORK UNTIL ALL CONDITIONS OF SAID PERMITS ARE MET.
- 10) ALL WATER UTILITY WORK AND MATERIALS SHALL COMPLY WITH THE KITTERY WATER DISTRICT'S REQUIREMENTS, SPECIFICATION AND THIS PLAN SET. THE PROPOSED WATER SERVICE SHALL BE SIZED BY THE MANUFACTURER TO MEET THE USAGE DEMANDS OF THE CAR WASH EQUIPMENT TO BE INSTALLED.
- 11) THE CONTRACTOR IS RESPONSIBLE FOR SEQUENCING OF WORK, MEANS AND METHODS OF CONSTRUCTION AND FOR IMPLEMENTATION OF A SAFETY PLAN.
- 12) THE EDGE OF WETLANDS AS SHOWN ON THESE PLANS WAS FLAGGED BY GOVE ENVIRONMENTAL SERVICES, INC. AREAS WHERE THE WIDTH OF FLAGGING IS 12 FEET OR LESS MEET THE DEFINITION OF A DRAINAGE DITCH PER THE TOWN OF KITTERY LAND USE AND DEVELOPMENT CODE.

GPI Engineering
Design
Planning
Construction Management
603.883.8725
GPI.NET.COM
Greenman-Pedersen, Inc.
44 Stiles Road, Suite One
Salem, NH 03079

PREPARED FOR
WAEBAK, LLC
44 MERRIMAC STREET
NEWBURYPORT, MA

**KITTERY CAR WASH
PROPOSED SEWER FORCE MAIN
MAP 28 LOT 25D
DOW HIGHWAY - ROUTE 236
KITTERY, MAINE**



REVISIONS		
NO.	REVISION	DATE

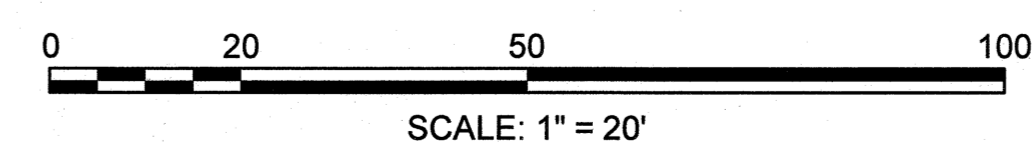
**SITE PLAN
AMENDMENT
UTILITY PLAN**

SCALE: 1"=20'

NEX-2021190

1 OF 5

APPROVED BY THE TOWN OF KITTERY
PLANNING BOARD ON: _____
PLANNING BOARD CHAIR DATE _____



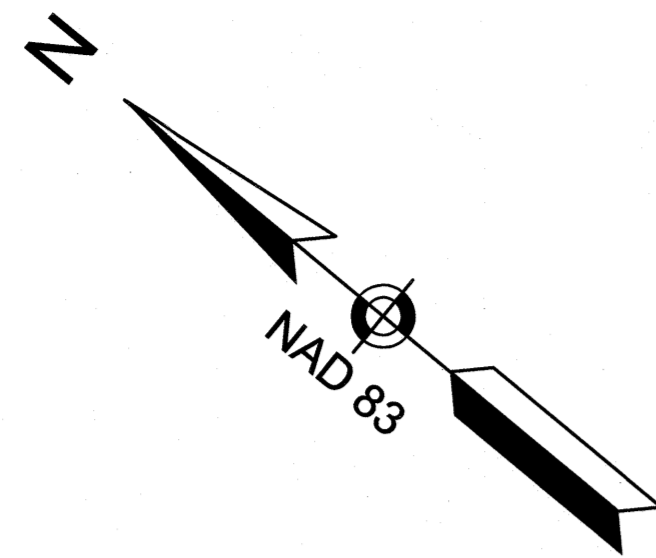
TAX MAP 28 LOT 25D

F:\Projects\NEX-2021190 - Kittery, ME - Waebak, LLC\CAD Files\21190_PROFILE.dwg PLAN 1/31/22 10:46am cccal



LEGEND

- CCB CAPE COD BERM
- DSLY DOUBLE SOLID LINE YELLOW
- SSLY SINGLE SOLID LINE YELLOW
- G GAS LINE
- STOCKADE FENCE
- TREE
- TREELINE
- SIGN
- SPOT ELEVATION
- SEWER MANHOLE
- GAS VALVE
- WETLAND LINE



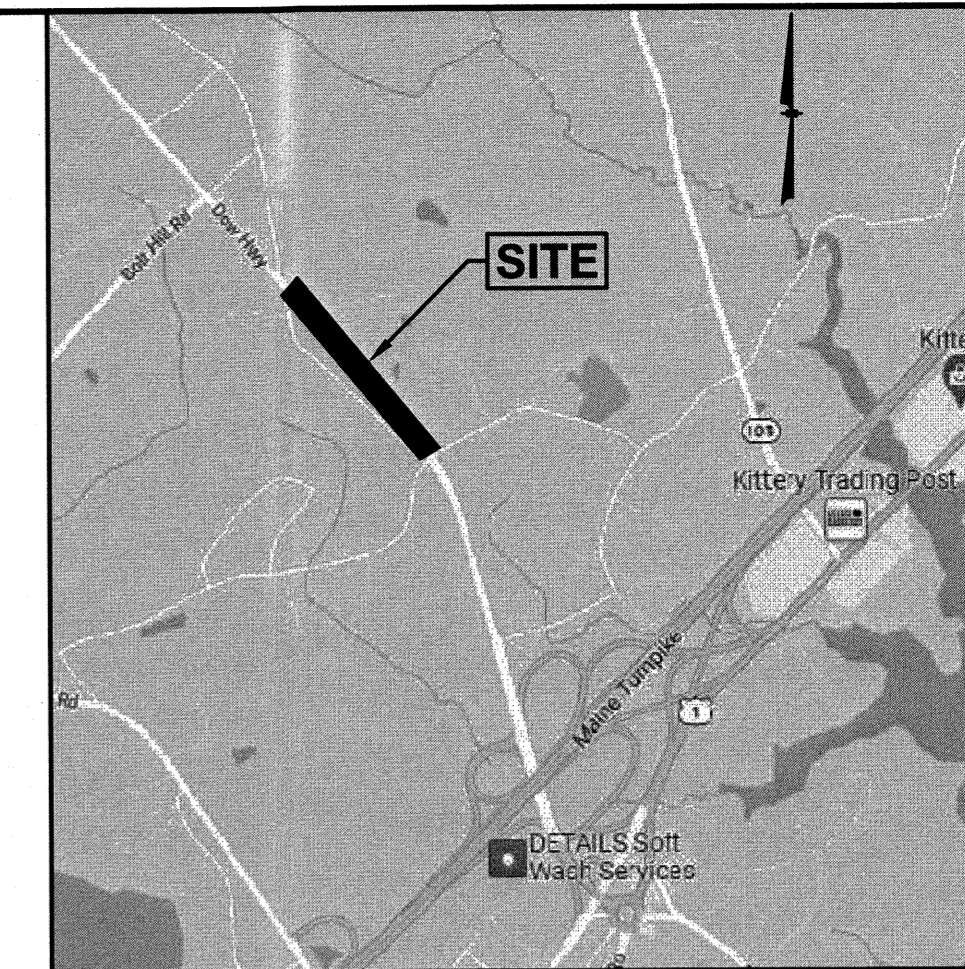
NOTES:

- 1) THE PURPOSE OF THIS PLAN IS TO SHOW A PROPOSED SEWER FORCE MAIN FOR THE KITTEERY CAR WASH ON MAP 28 LOT 25D.
- 2) THE EXISTING CONDITIONS INFORMATION SHOWN IS THE RESULT OF AN ON-THE-GROUND FIELD SURVEY PERFORMED BY THIS OFFICE BETWEEN JUNE 16 AND JUNE 17, 2021.
- 3) WETLAND FLAGS WERE DELINEATED BY GOVE ENVIRONMENTAL SERVICES ON JUNE 7 AND OCTOBER 12, 2021 AND LOCATED BY THIS OFFICE.
- 4) BEARINGS SHOWN HEREON ARE BASED ON NAD83 PER GPS OBSERVATIONS PERFORMED BY THIS OFFICE ON JUNE 16, 2021.
- 5) ELEVATIONS SHOWN HEREON ARE BASED ON NAVD88 PER GPS OBSERVATIONS PERFORMED BY THIS OFFICE ON JUNE 16, 2021.
- 6) LOCATION OF UNDERGROUND UTILITIES IS APPROXIMATE ONLY. ADDITIONAL UNDERGROUND UTILITIES OTHER THAN THOSE SHOWN MAY BE ENCOUNTERED. INVERTS ARE LISTED IN A CLOCKWISE DIRECTION ENDING WITH THE INVERT OUT (UNLESS OTHERWISE NOTED).
- 7) THE SURVEY TRACT IS NOT LOCATED IN A SPECIAL FLOOD HAZARD AREA (100 YEAR FLOOD) PER FLOOD INSURANCE RATE MAP NUMBER 2301710004C, WITH AN EFFECTIVE DATE OF JULY 5, 1984.
- 8) ALL GRAVITY SANITARY SEWER PIPE SHALL BE PVC (SDR-35), UNLESS OTHERWISE NOTED. ALL SEWER FORCE MAIN PIPE SHALL BE SDR11 PVC UNLESS OTHERWISE NOTED.

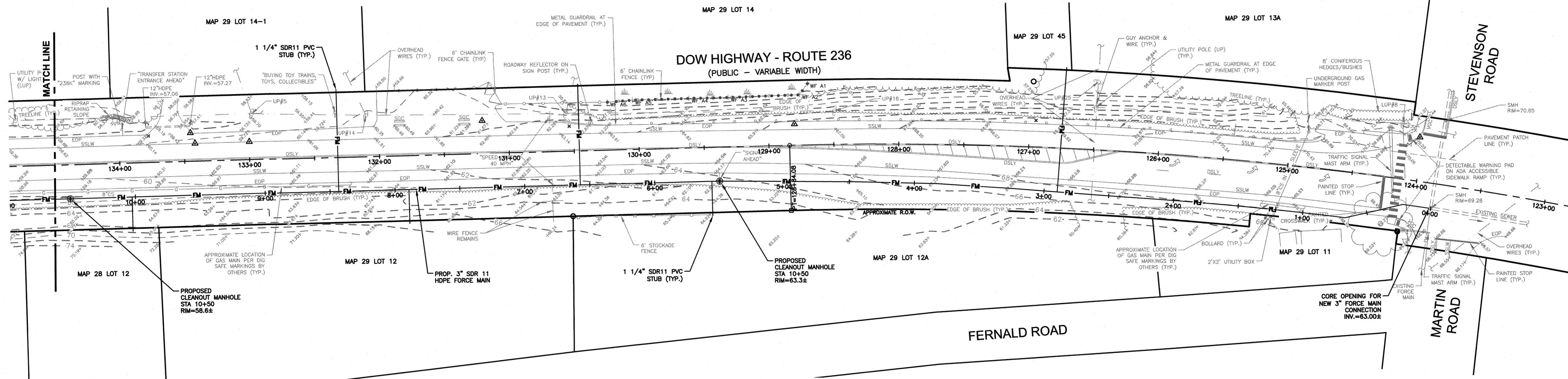
- 9) ANY UTILITY FIELD ADJUSTMENTS SHALL BE APPROVED BY THE LOCAL AUTHORITIES AND THE DEVELOPER PRIOR TO INSTALLATION.
- 10) THE LOCATIONS OF UNDERGROUND UTILITIES ARE APPROXIMATE ONLY. THE CONTRACTOR IS TO VERIFY EXACT LOCATION PRIOR TO CONSTRUCTION. THE CONTRACTOR IS TO NOTIFY THE DESIGN ENGINEER OF ANY DISCREPANCIES.
- 11) ALL CONSTRUCTION SHALL CONFORM TO MUNICIPAL DPW AND ALL APPLICABLE STATE AND FEDERAL STANDARDS.
- 12) THE CONTRACTOR SHALL CALL AND COORDINATE WITH DIG-SAFE (1-888-344-7233) PRIOR TO COMMENCING ANY EXCAVATION.
- 13) ALL SEWER CONSTRUCTION SHALL CONFORM TO THE TOWN OF KITTEERY STANDARDS AND SPECIFICATIONS.
- 14) ALL TRAFFIC CONTROL AND TEMPORARY CONSTRUCTION SIGNAGE ARRANGEMENTS, ACCEPTABLE TO MDTOT AND KITTEERY PUBLIC WORKS DEPARTMENT, SHALL BE EMPLOYED DURING OPERATIONS WITHIN THE PUBLIC RIGHT-OF-WAY.
- 15) CONTRACTOR TO COORDINATE WITH ALL UTILITY COMPANIES AND TOWN OF KITTEERY TO ENSURE PROPER SEPARATION IS PROVIDED AT ALL UTILITY CROSSINGS. CONTACT SITE ENGINEER IN THE EVENT THERE ARE ANY CONFLICTS OR DISCREPANCIES AT UTILITY CROSSINGS.

PLAN REFERENCES:

- 1) MAINE STATE HIGHWAY COMMISSION RIGHT OF WAY MAP STATE HIGHWAY "100", KITTEERY, YORK COUNTY, FEDERAL AID SECONDARY PROJECT S-0100(5) DATED JANUARY 1956, REVISED THROUGH 9/22/58



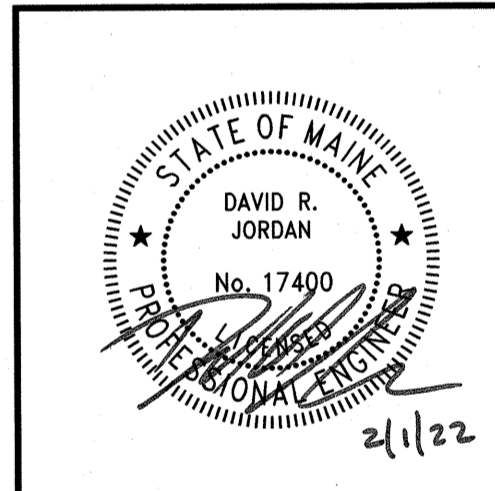
LOCATION MAP
(NOT TO SCALE)



GPI Engineering
Design
Planning
Construction Management
603.833.0720
Greenman-Pedersen, Inc.
44 Stiles Road, Suite One
Salem, NH 03079
GPI.NET.COM

PREPARED FOR
WAEBAK, LLC
44 MERRIMAC STREET
NEWBURYPORT, MA

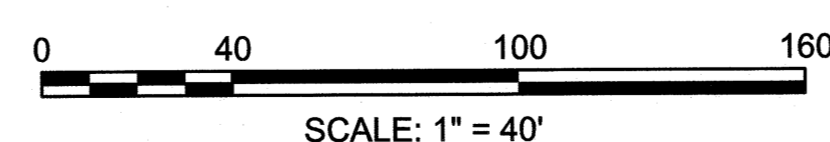
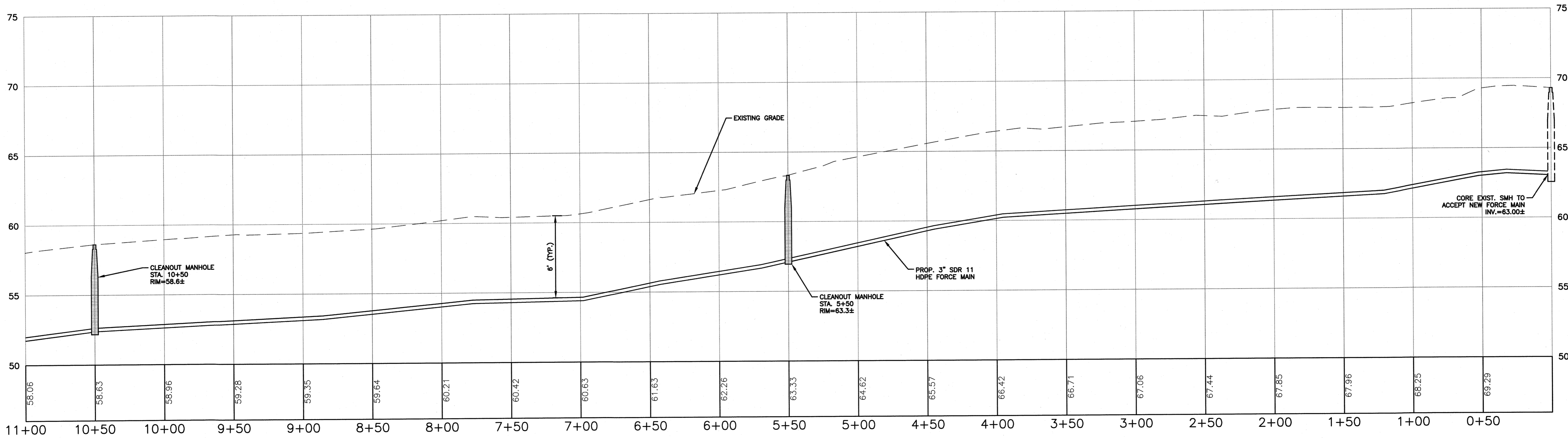
KITTEERY CAR WASH
PROPOSED SEWER FORCE MAIN
MAP 28 LOT 25D
DOW HIGHWAY - ROUTE 236
KITTEERY, MAINE



REVISIONS		
NO.	REVISION	DATE

SITE PLAN
AMENDMENT
SEWER PLAN
& PROFILE

SCALE: 1"=40'
NEX-2021190
2 OF 5



APPROVED BY THE TOWN OF KITTEERY
PLANNING BOARD ON: _____
PLANNING BOARD CHAIR _____ DATE _____

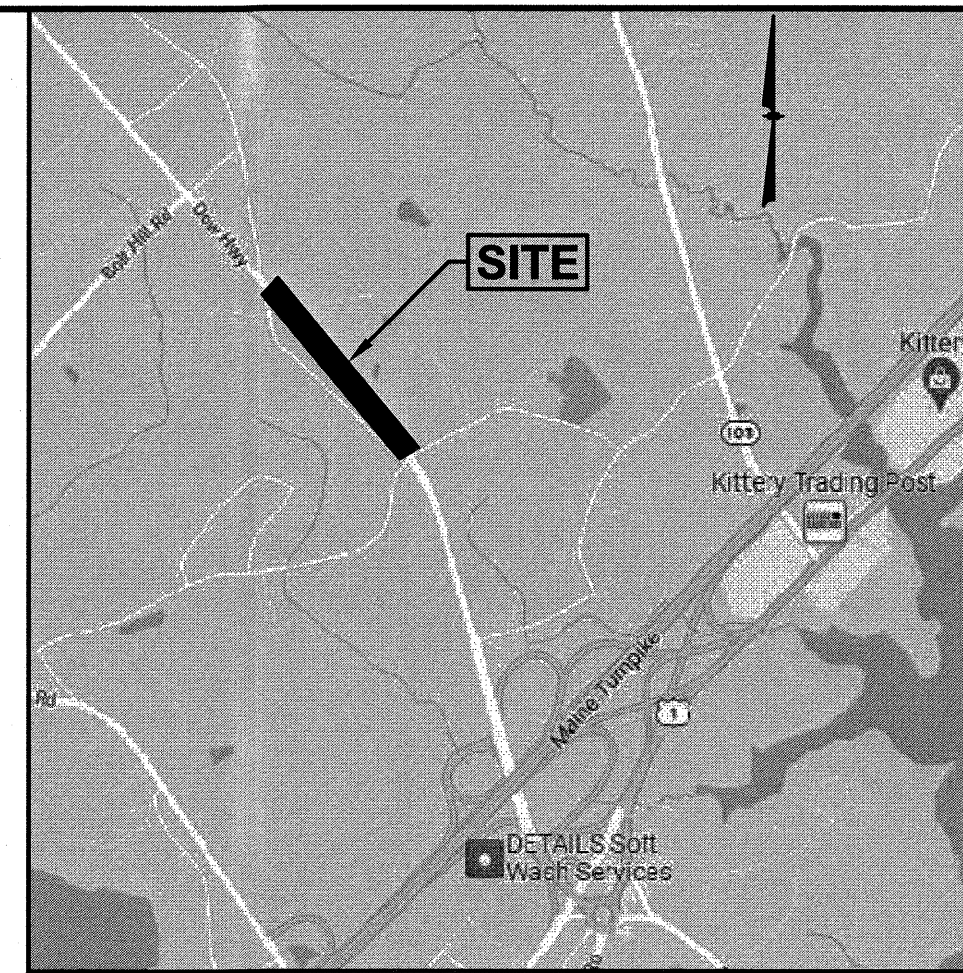
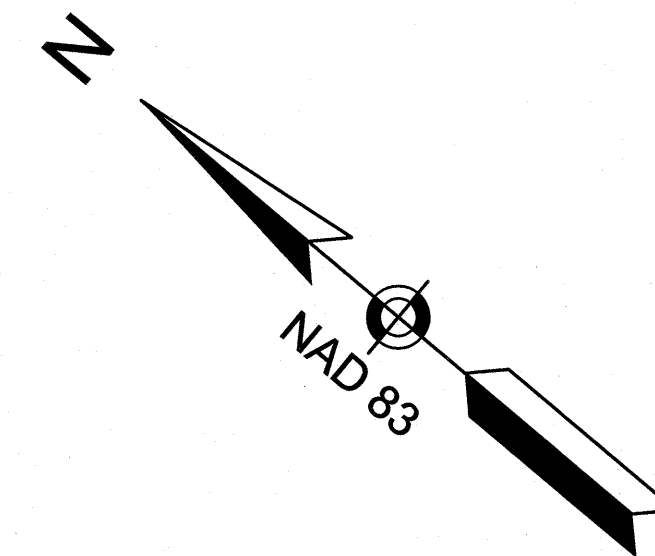
TAX MAP 28 LOT 25D

F:\Projects\NEX-2021190 - Kittery, ME - Waebak, LLC\CAD_Files\21190_PROFILE.dwg PROF-1 1/27/22 9:27am cccil

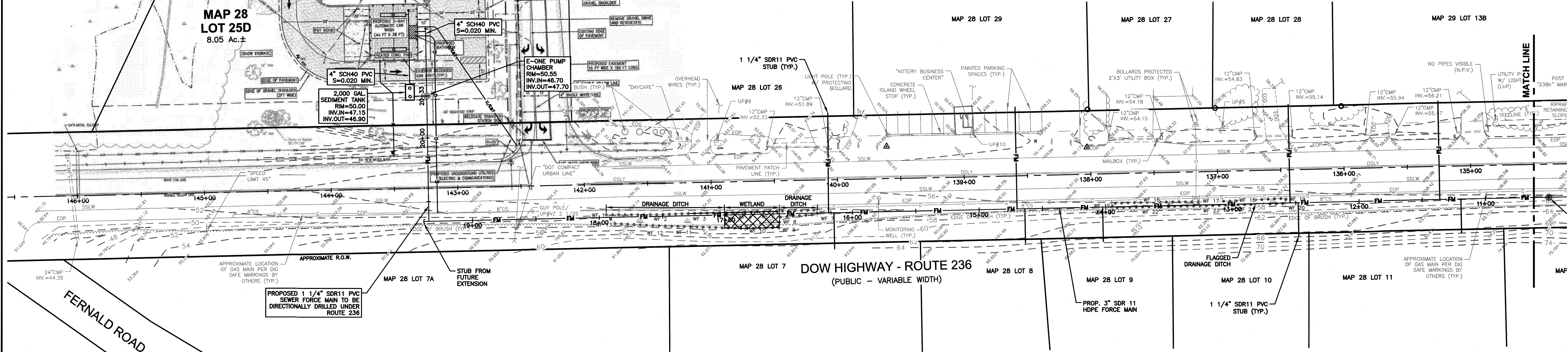


LEGEND

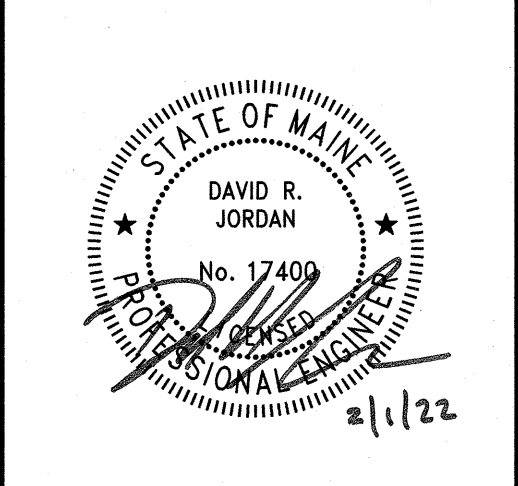
- CCB CAPE OOD BERM
- DSLY DOUBLE SOLID LINE YELLOW
- SSLY SINGLE SOLID LINE YELLOW
- G GAS LINE
- STOCKADE FENCE
- TREE
- TREELINE
- SIGN
- SPOT ELEVATION
- SEWER MANHOLE
- GAS VALVE
- WETLAND LINE



LOCATION MAP
(NOT TO SCALE)



KITTERY CAR WASH
PROPOSED SEWER FORCE MAIN
MAP 28 LOT 25D
DOW HIGHWAY - ROUTE 236
KITTERY, MAINE



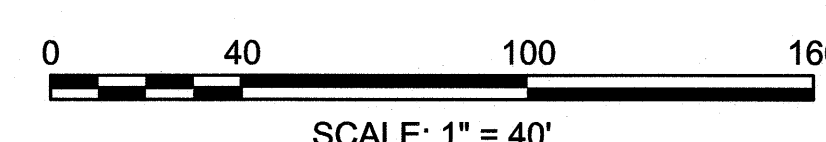
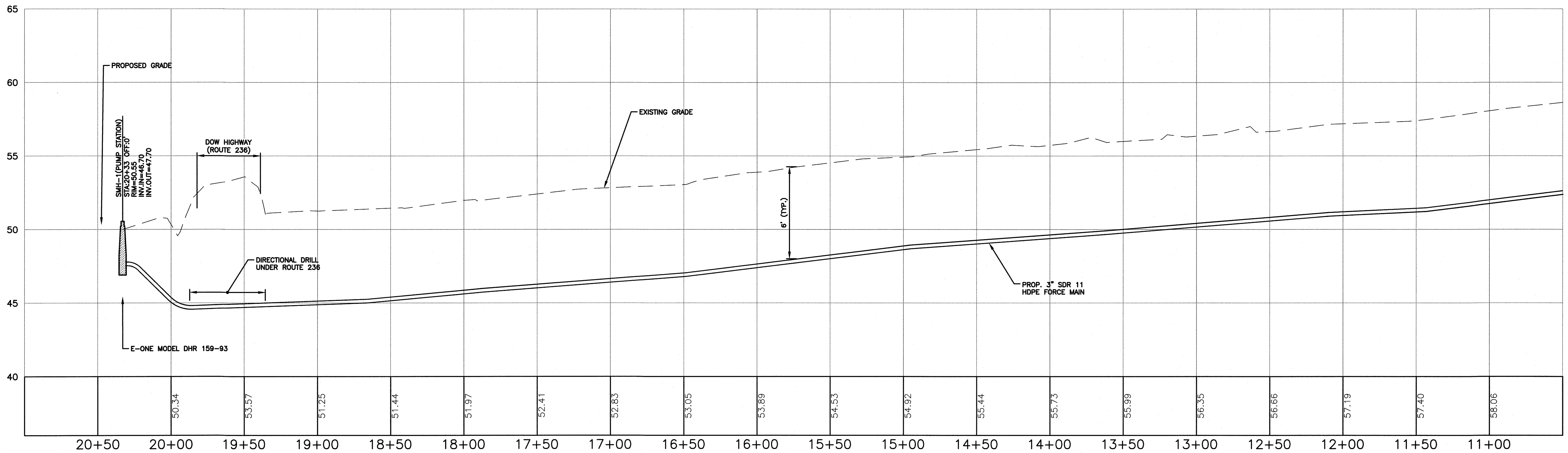
REVISIONS		
NO.	REVISION	DATE

SITE PLAN
AMENDMENT
SEWER PLAN
& PROFILE

SCALE: 1"=40'

NEX-2021190

3 OF 5

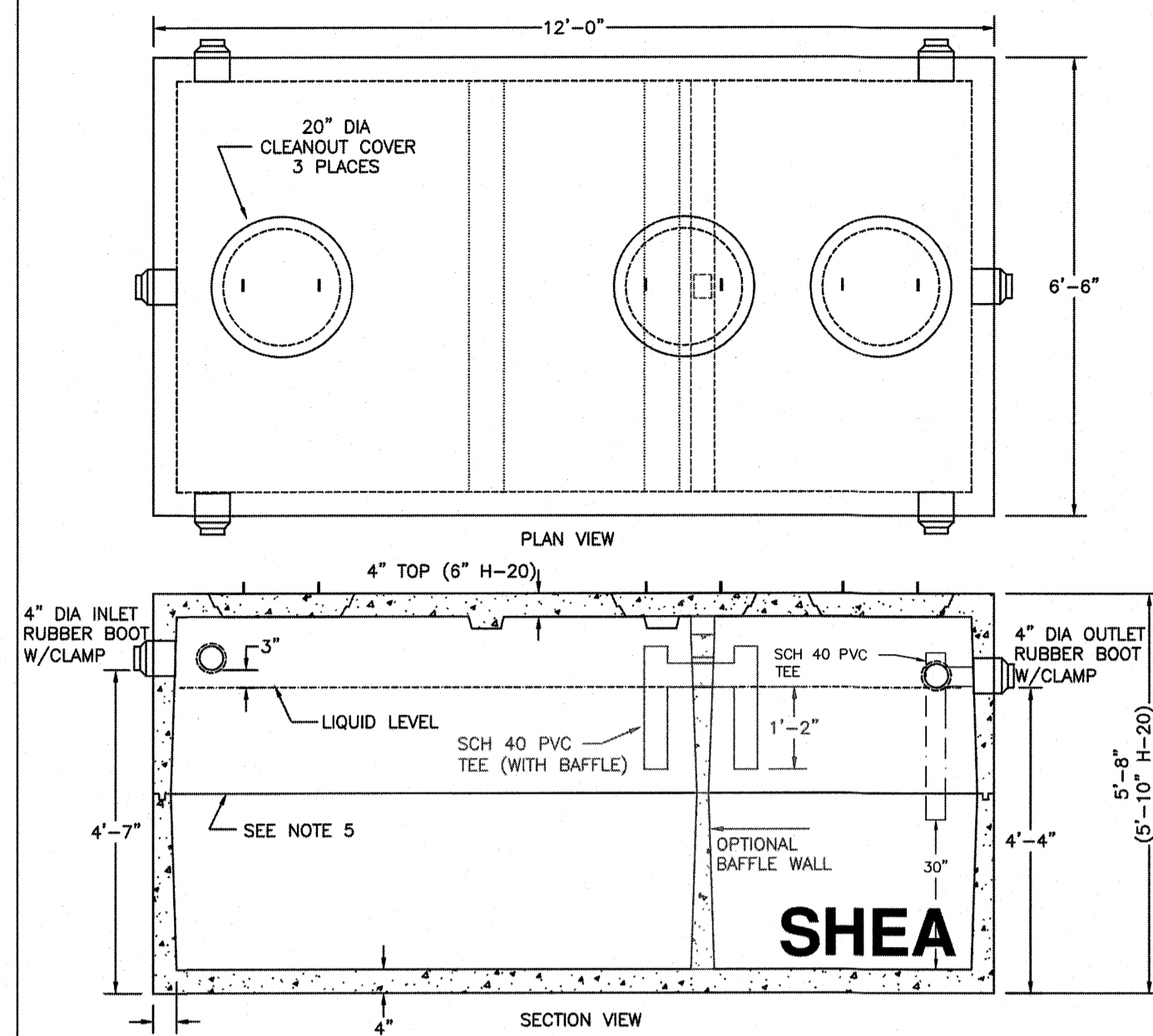


APPROVED BY THE TOWN OF KITTERY
 PLANNING BOARD ON: _____
 PLANNING BOARD CHAIR DATE _____

TAX MAP 28 LOT 25D

F:\Projects\NEX-2021190 - Kittery, ME - Waebak, LLC\CAD Files\21190_PROFILE.dwg PROF-2 1/27/22 9:27am ccoll





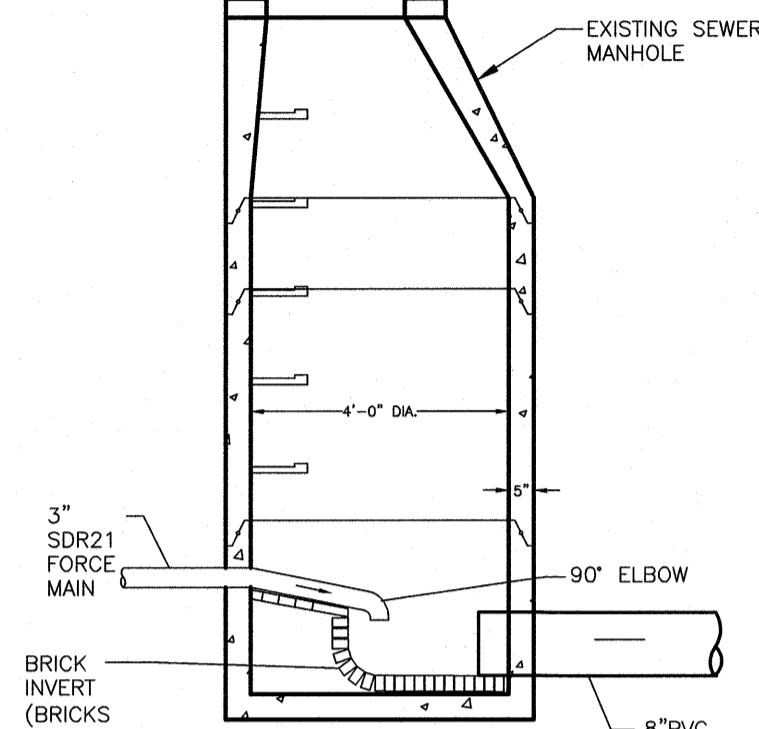
- NOTES:
1. CONCRETE: 4,000 PSI MINIMUM AFTER 28 DAYS.
 2. CONSTRUCTION OF SEPTIC TANK CONFORMS WITH 310 CMR, SECTION 15.00 DEP TITLE 5 REGS.
 3. ALL REINFORCEMENT PER ASTM C1227.
 4. BAFFLE WALL OPTIONAL FOR TWO COMPARTMENT TANKS.
 5. TEES AND GAS BAFFLE SOLD SEPARATELY.
 6. TONGUE & GROOVE JOINT SEALED WITH BUTYL RESIN.
 7. IF COVER EXCEEDS 4 FEET, HEAVY DUTY TANK REQUIRED. ALSO AVAILABLE IN AASHTO HS-20 LOADING.

ITEM NO.	2000	STANDARD	WEIGHT
	2000H	H-20	14,245#
	2000ZC	STANDARD	15,855#
	2000ZCH	H-20	17,810#

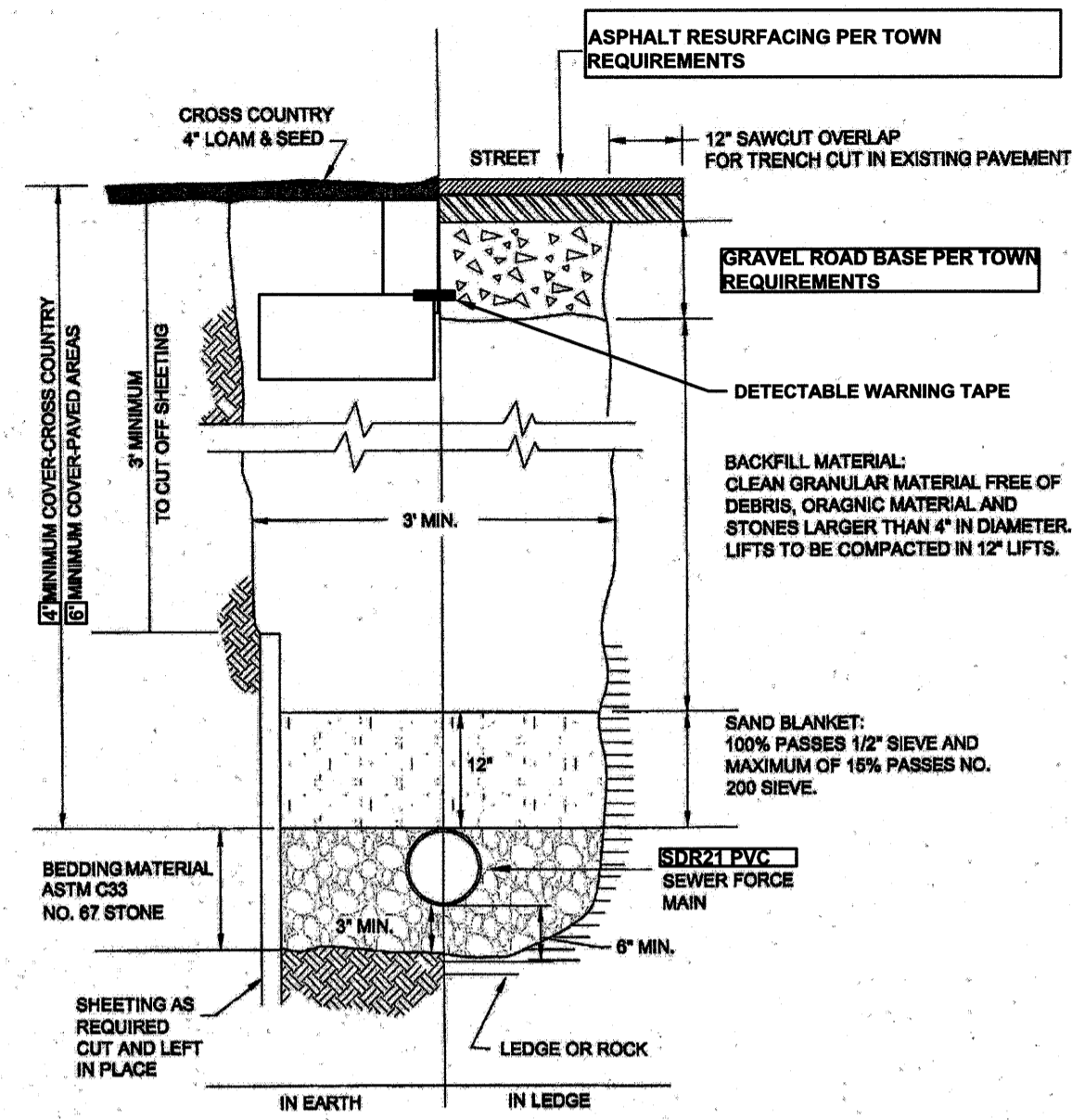
SHEA PRODUCT ID:	SEE TABLE	PREPARED FOR:	FILE NAME:	UK2000.dwg
WEIGHT (LBS):	SEE TABLE	DRAWN BY:	DATE:	06/01/18
		PAGE:		81.5

773 Salem Street-Wilmington, MA | 153 Cranberry Hwy-Rochester, MA | 87 Haverhill Road-Amesbury, MA | 180 Old Turnpike Rd-Nortingham, NH
 Specifications subject to change without notice.

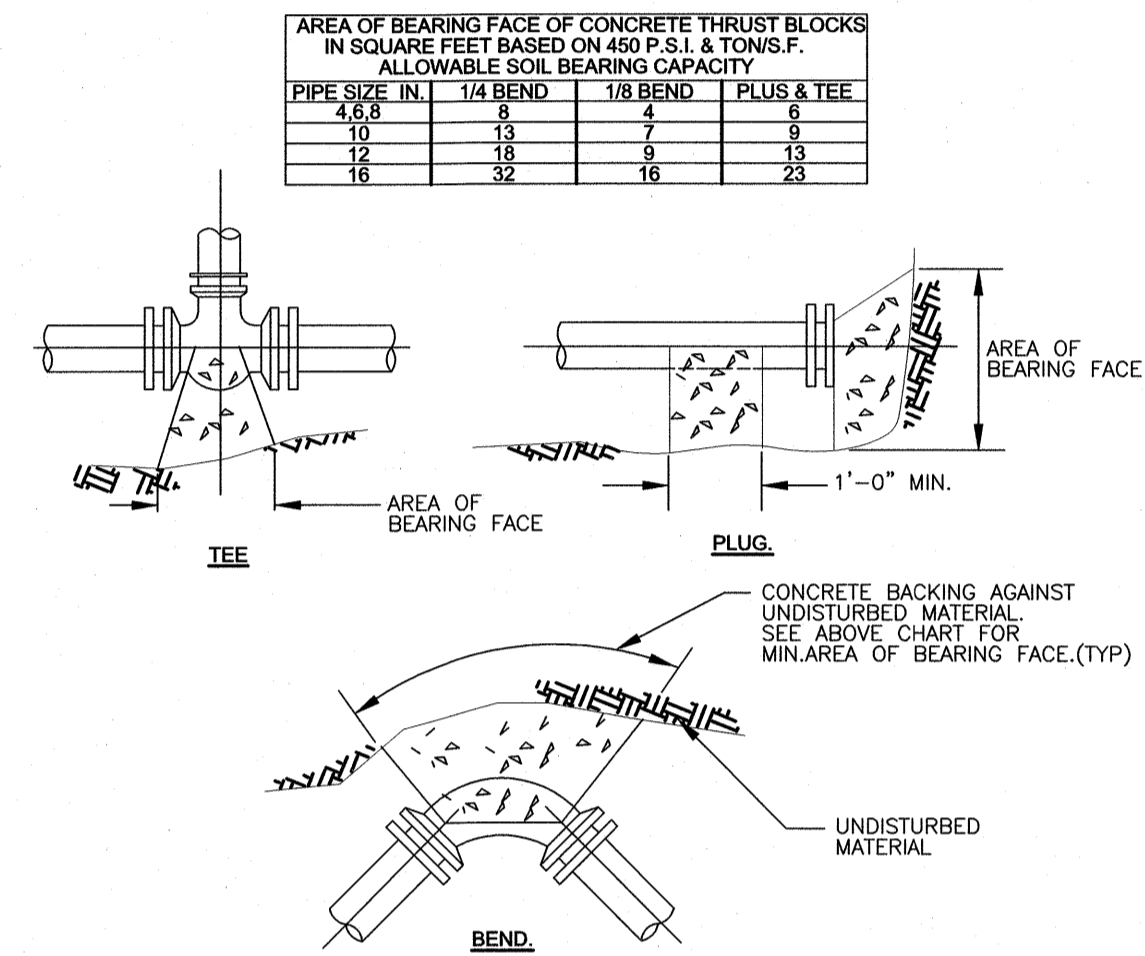
TYPICAL 2,000 GALLON SEDIMENT TANK
 NOT TO SCALE



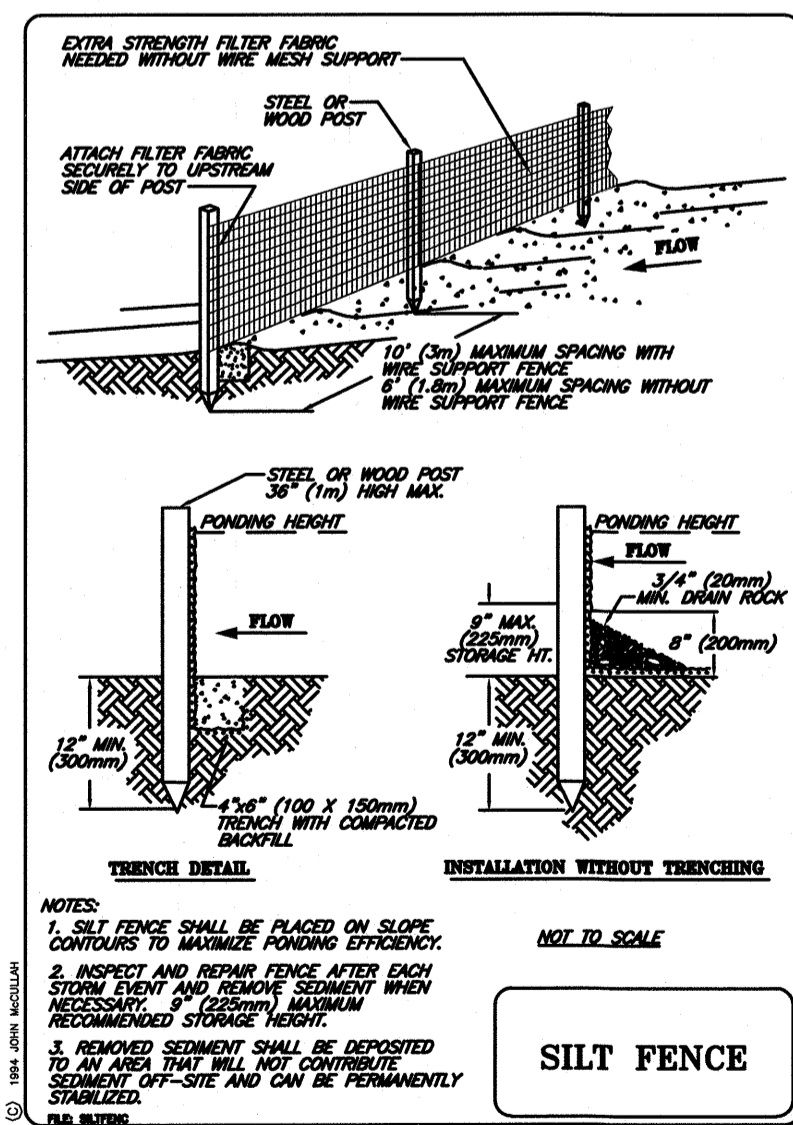
FORCE MAIN CONNECTION TO GRAVITY SEWER
 NOT TO SCALE



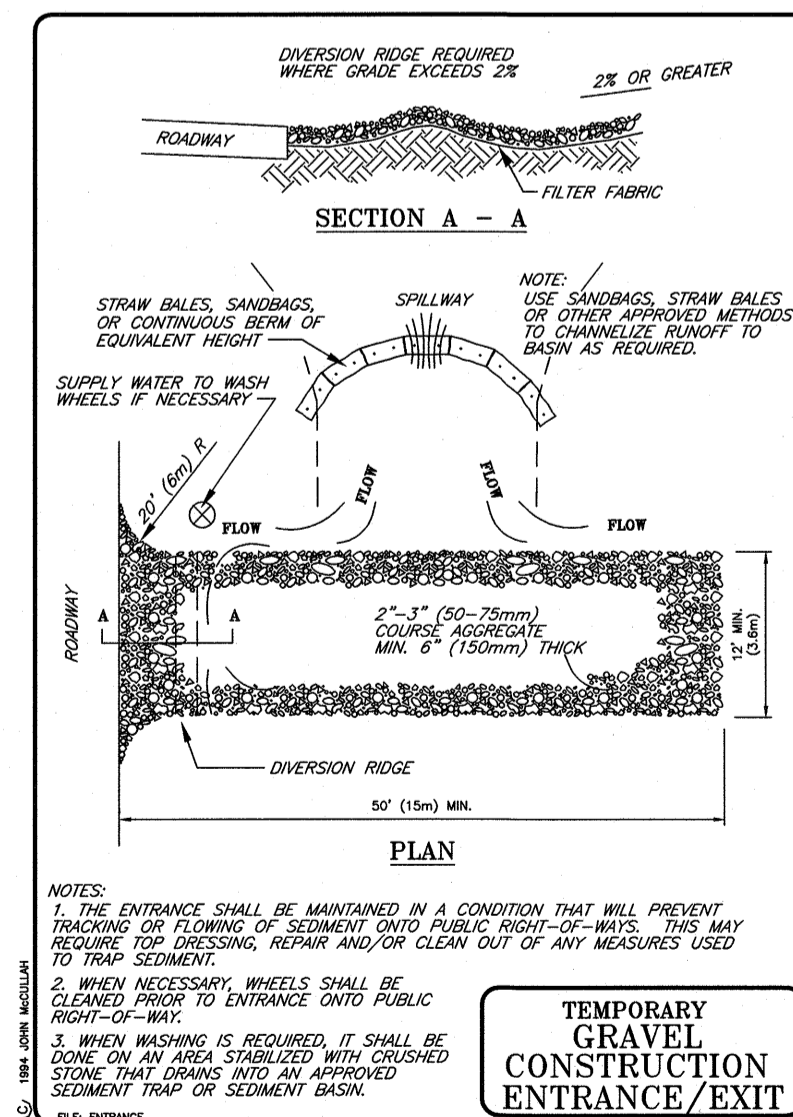
FORCE MAIN TRENCH SECTION
 N.T.S.



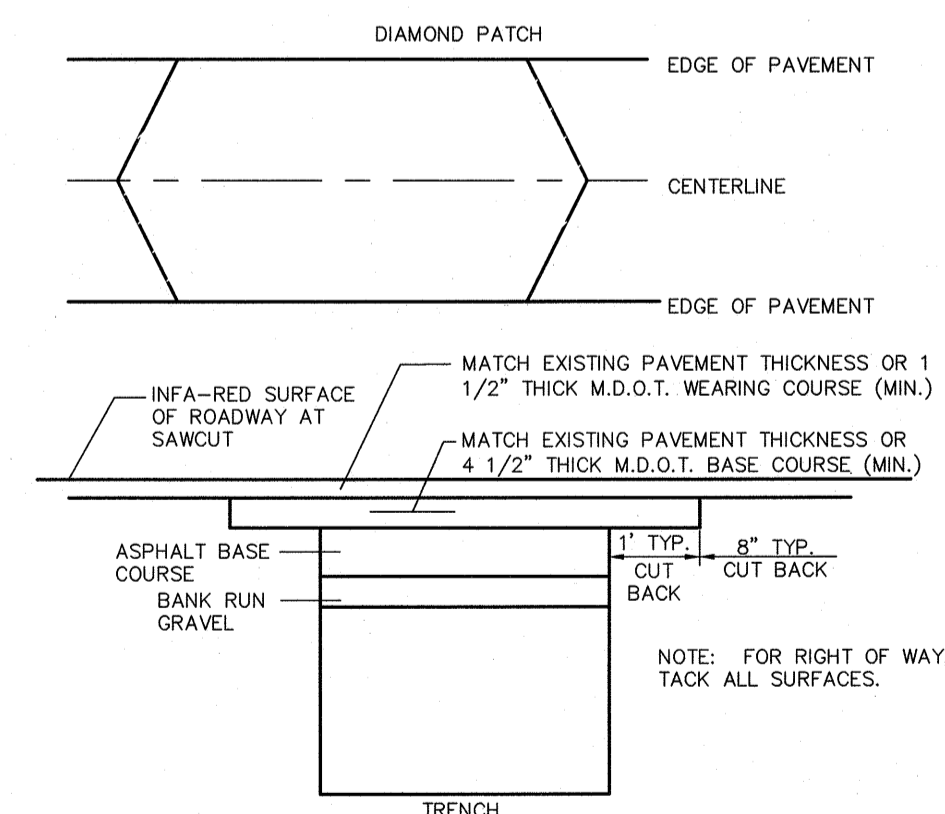
TYPICAL CONCRETE BACKING
 NOT TO SCALE



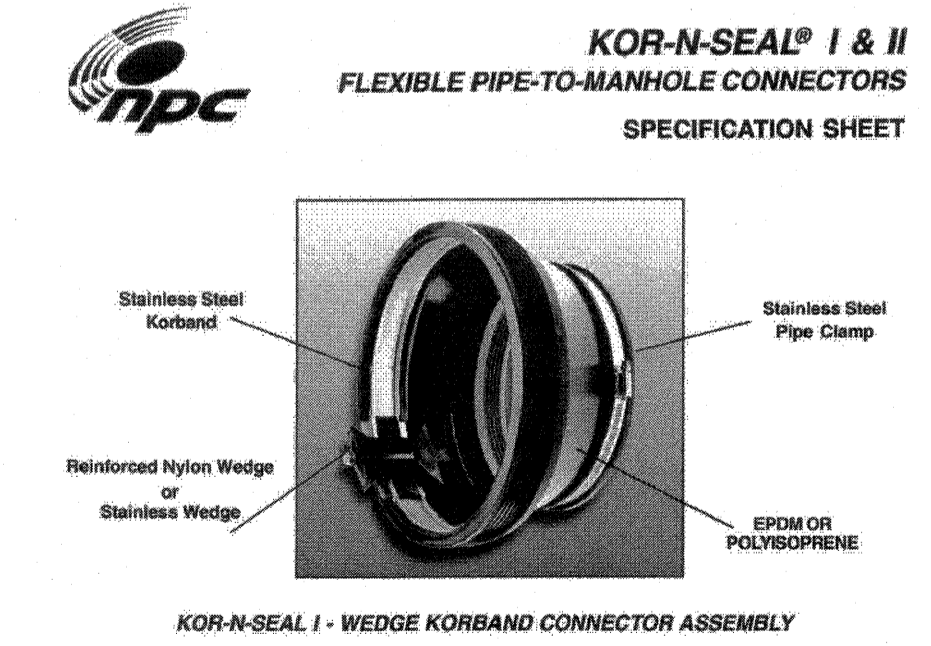
SILT FENCE
 NOT TO SCALE



TEMPORARY GRAVEL CONSTRUCTION ENTRANCE/EXIT
 NOT TO SCALE

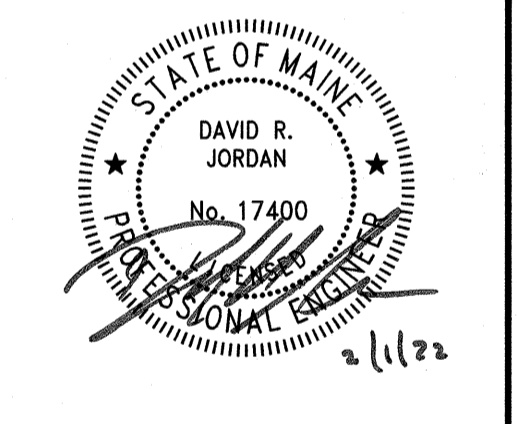


TYPICAL PAVEMENT REPAIR DETAIL
 NOT TO SCALE



KOR-N-SEAL DETAIL
 NOT TO SCALE

- GENERAL CONSTRUCTION NOTES:**
- 1) CONTRACTOR TO VERIFY INVERT OF INFLUENT SEWER LINE PRIOR TO CONSTRUCTION.
 - 2) OSHA CONFINED SPACE REGULATIONS TO BE ADHERED TO PRIOR TO ENTERING PUMP STATION.
 - 3) PUMP STATION JOINTS TO BE SEALED AGAINST GROUND WATER INFILTRATION PER MANUFACTURERS SPECIFICATIONS.
 - 4) STATION TO BE PLACED ON 6" MIN. GRAVEL BEDDING.
 - 5) FORCE MAIN TO BE SDR21 PVC WITH COMPRESSION TYPE FITTINGS.
 - 6) ALL PIPE CONNECTIONS TO PRECAST CONCRETE STRUCTURE TO BE KOR-N-SEAL FLEXIBLE BOOTS (OR EQUAL) AS APPROVED BY ENGINEER.
 - 7) FORCE MAIN SHALL HAVE A MINIMUM DEPTH OF COVER OF 4' IN CROSS COUNTRY LOCATIONS AND 6' UNDER PAVED SURFACES. FORCE MAIN INSTALLED WITH LESS THAN 4' COVER SHALL BE INSULATED. PROPOSED INSULATION SHALL BE SUBMITTED TO ENGINEER FOR APPROVAL.
 - 8) THE FORCE MAIN PIPE LOCATION SHALL BE MARKED IN THE FIELD BY DETECTABLE UNDERGROUND WARNING TAPE. THE WARNING TAPE SHALL BE 6" WIDE, DURABLE PLASTIC ENCASED ALUMINUM, COLOR CODED GREEN AND LABELED "SEWER". SIMILAR TO GRANGER PART #19225. UNDETECTABLE TAPE WILL NOT BE ACCEPTED. THE WARNING TAPE SHALL BE BURIED 6 TO 12" BELOW FINISH GRADE.
 - 9) THRUST BLOCKS SHALL BE PROVIDED AT ALL BENDS AND CHANGES OF DIRECTION OF THE FORCE MAIN.
 - 10) AN EXTENDED BASE IS REQUIRED FOR THE PUMP STATION FOR BUOYANCY PROTECTION.



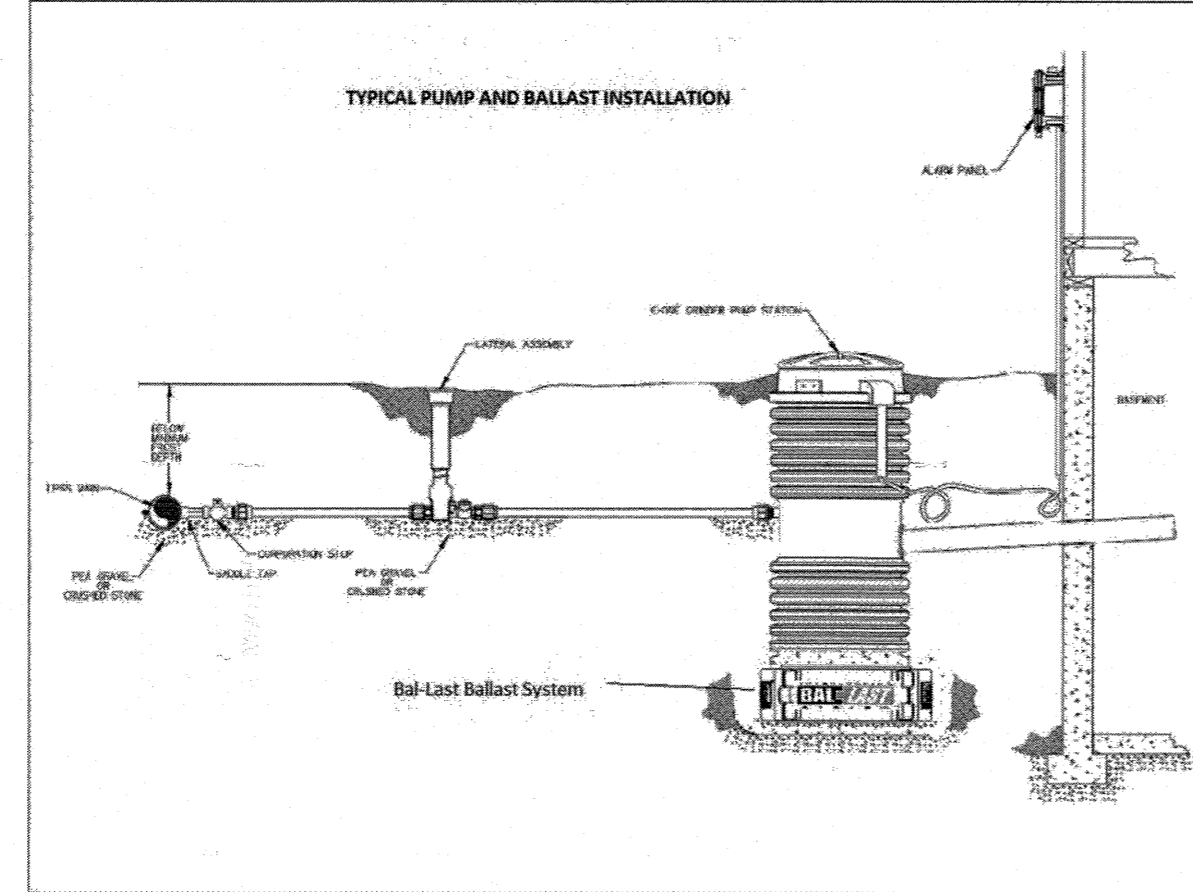
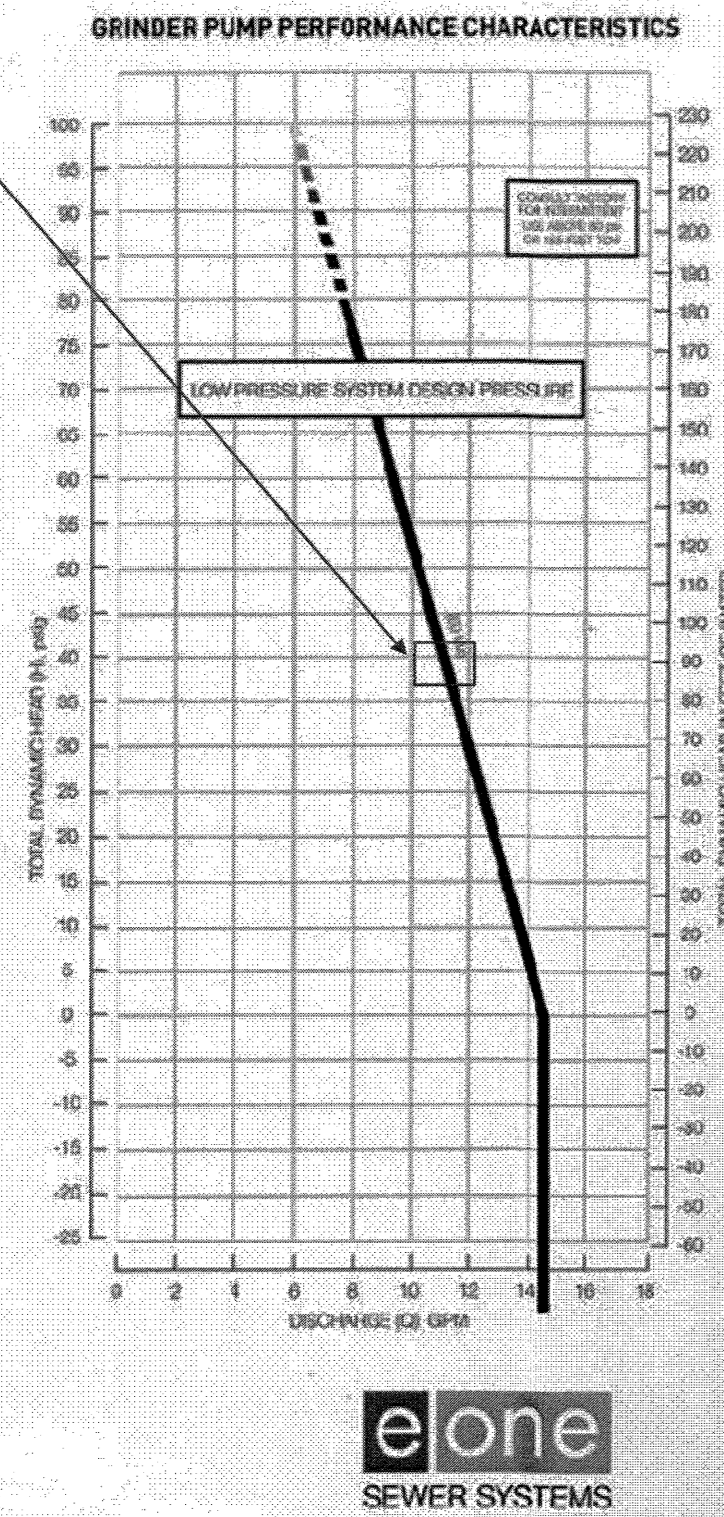
REVISIONS		
NO.	REVISION	DATE

Operation Conditions

106.12 Feet is the highest TDH at simultaneous operating conditions with the expected number of pumps operating in each zone, or the head of an individual pump operating in a single zone condition.

Operating range of E/One pumps from 0-185 feet TDH and from 0 to -60 feet TDH.

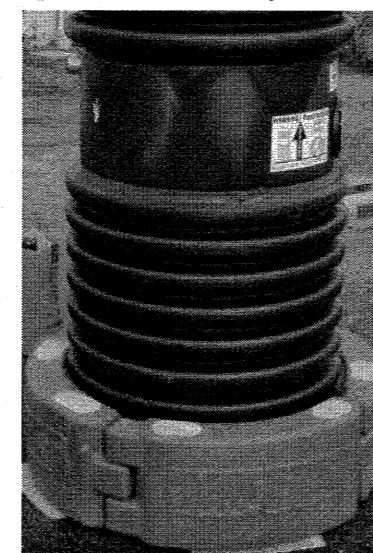
Anti-siphon valves in E/One cores provide for negative head pumping. In common systems with negative heads of 25-30 feet or more we recommend the use of combination air/vacuum release valves as described below.



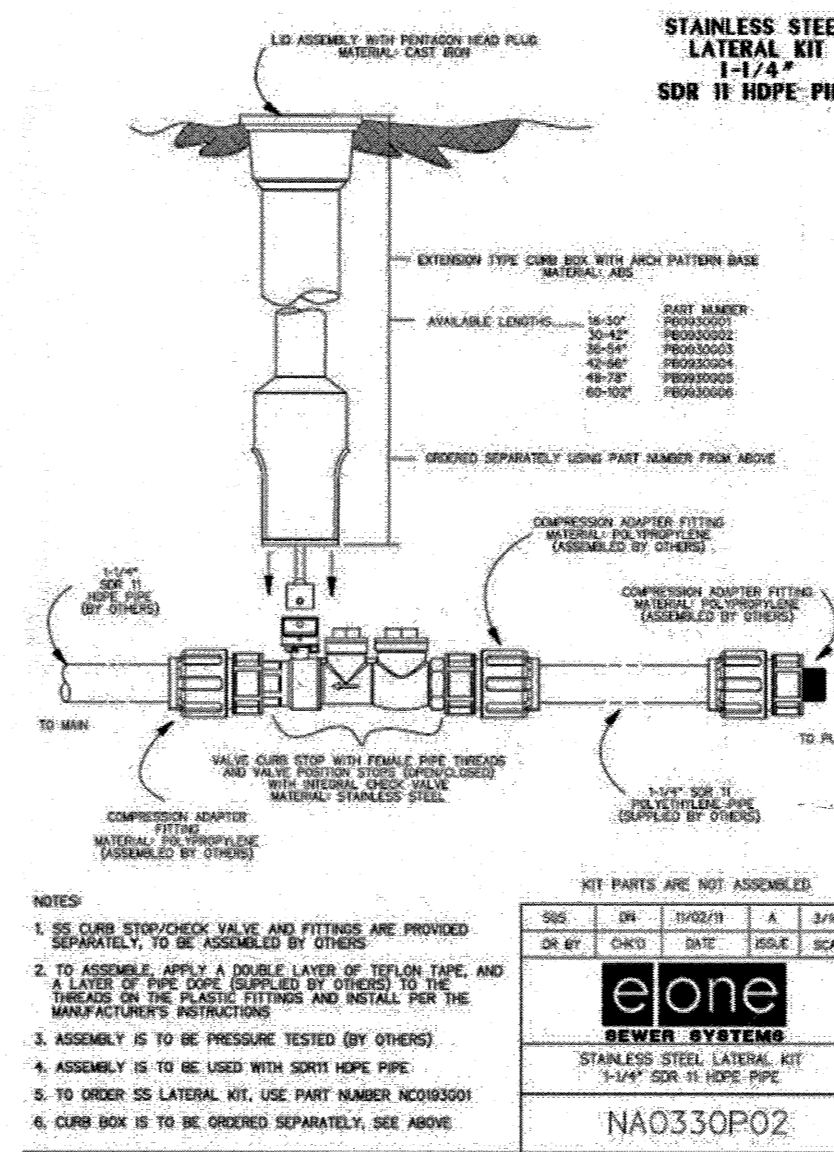
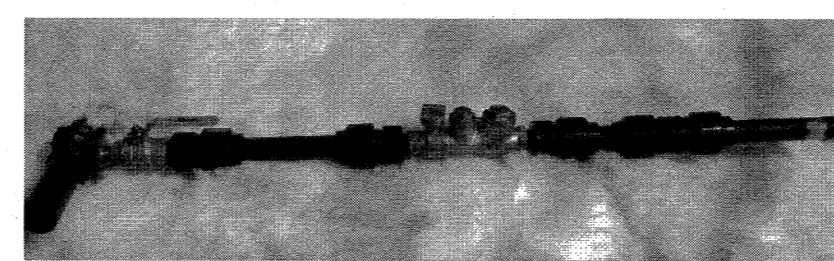
This image shows the typical layout of an outdoor pump unit for single-family home use. This layout will be very similar to the duplex layout. All piping for inlets and discharge will have the same orientation as shown above. The pump unit is furnished complete, ready for installation. The installer needs to confirm the power cord length and discharge and inlet configuration. Standard inlets are 4-inch Schedule 40 Grommets (@ zero degrees) with 1-1/4 inch discharge (@ 180 degrees). Other configurations are available.

All DH071 Stations require ballast during installation. We have a ballast containment system for these basins to eliminate on-site forming and pouring.

The Bal-Last™ blocks (set of 4) lock to the pump base and exceed Environment One's required ballast for all heights of the DH071 stations in fully saturated soils following proper backfilling.



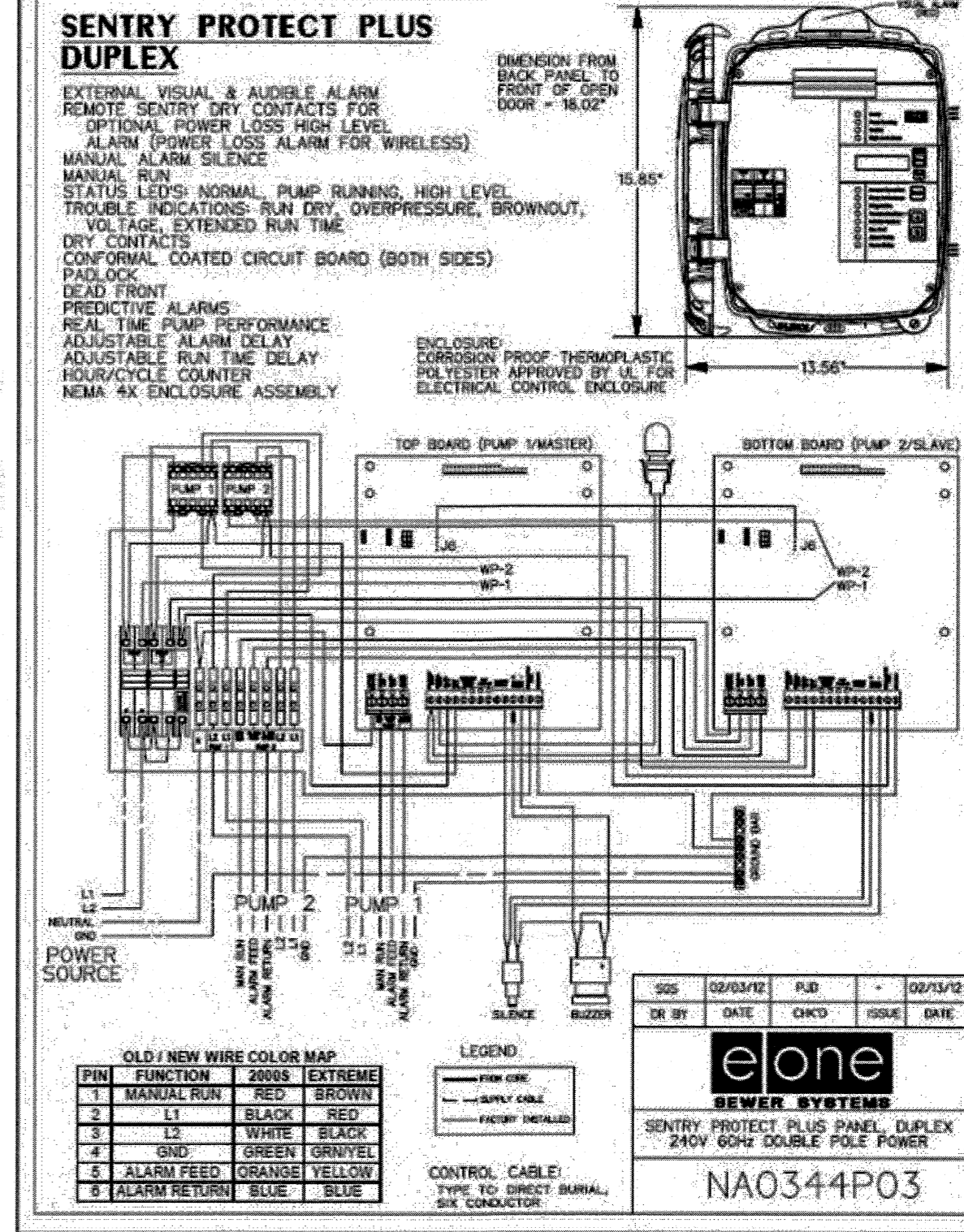
Lateral Connections



Pressure Sewer System pumps must be isolated from the common mainline with a corporation stop and curb stop lateral kit.

The lateral kit will have a full port ball valve and full port redundant check valve. Check valves shall be rated for 150 psi minimum system operating pressure including system back pressure.

Components are to be corrosion resistant Stainless Steel with Corrosion resistant PVC, Polypropylene or HDPE materials.



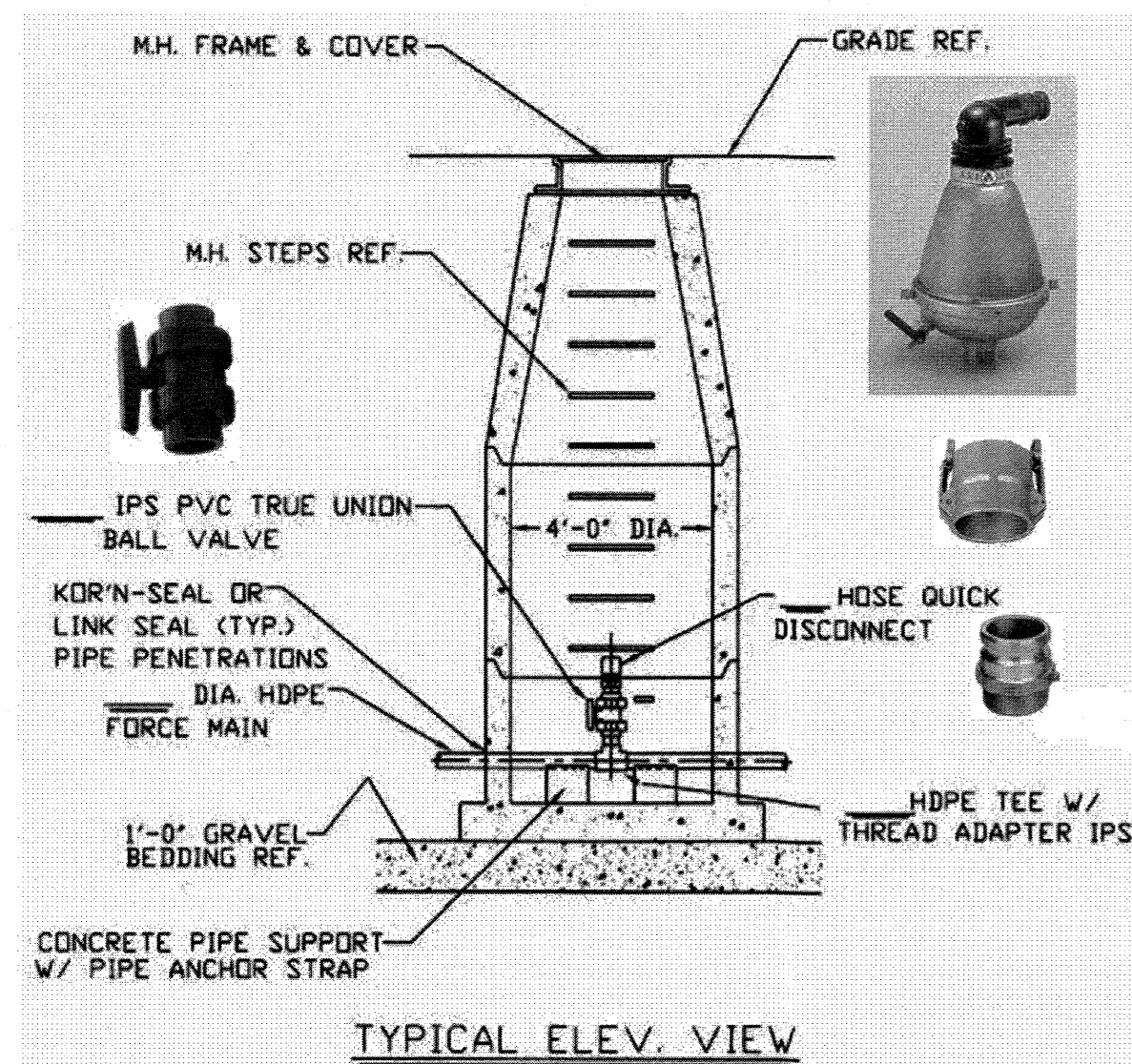
30 DuPaul Street Southbridge, MA 01550 tel. 508.765.0051 fax 508.765.1244
 41 Bayberry Hill Road W. Townsend, MA 01474 tel. 978.597.0703 fax 978.597.0704
 140 Country Walk Road Schenectady, NY 12306 tel. 774-402-0354 fax. 518-356-3266
 3906C Tower Hill Road Wakefield, RI 02879 tel. 781-561-6555

30 DuPaul Street Southbridge, MA 01550 tel. 508.765.0051 fax 508.765.1244
 41 Bayberry Hill Road W. Townsend, MA 01474 tel. 978.597.0703 fax 978.597.0704
 140 Country Walk Road Schenectady, NY 12306 tel. 774-402-0354 fax. 518-356-3266
 3906C Tower Hill Road Wakefield, RI 02879 tel. 781-561-6555

PREPARED FOR
WAEBAK, LLC
 44 MERRIMAC STREET
 NEWBURYPORT, MA

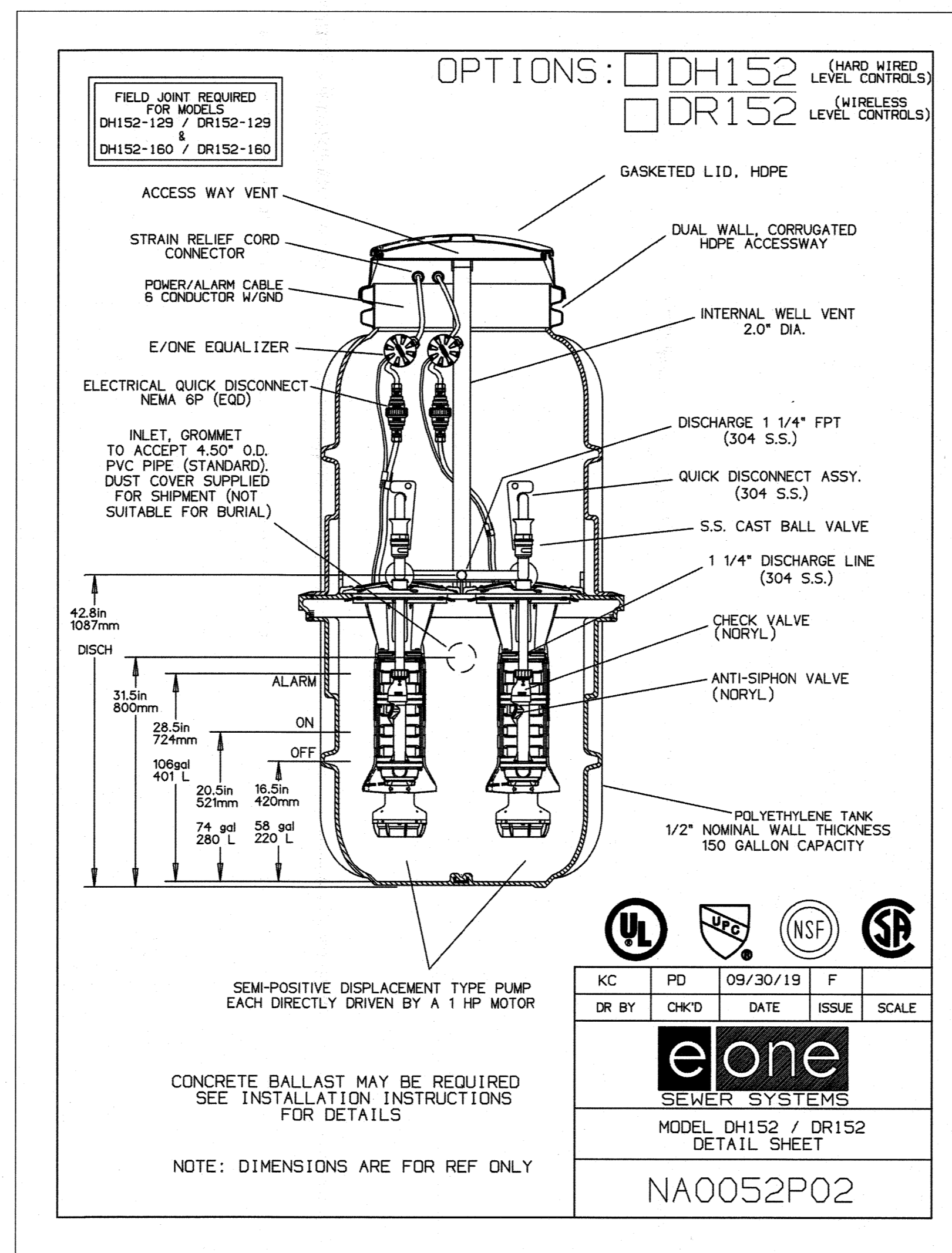
**KITTERY CAR WASH
 PROPOSED SEWER FORCE MAIN
 MAP 28 LOT 25D
 DOW HIGHWAY - ROUTE 236
 KITTERY, MAINE**

Typical Cleanout Detail
 (Optional Air/Vacuum Valve shown -right)



Cleanout detail can be modified to match typical installation needs. Inline shut offs may be added to isolate flow direction. Image shown is flow through cleanout. These structures can be terminal end of line cleanouts, or junction cleanouts as may be required. Optional air and vacuum relief valves may be added when required.

30 DuPaul Street Southbridge, MA 01550 tel. 508.765.0051 fax 508.765.1244
 41 Bayberry Hill Road W. Townsend, MA 01474 tel. 978.597.0703 fax 978.597.0704
 140 Country Walk Road Schenectady, NY 12306 tel. 774-402-0354 fax. 518-356-3266
 3906C Tower Hill Road Wakefield, RI 02879 tel. 781-561-6555

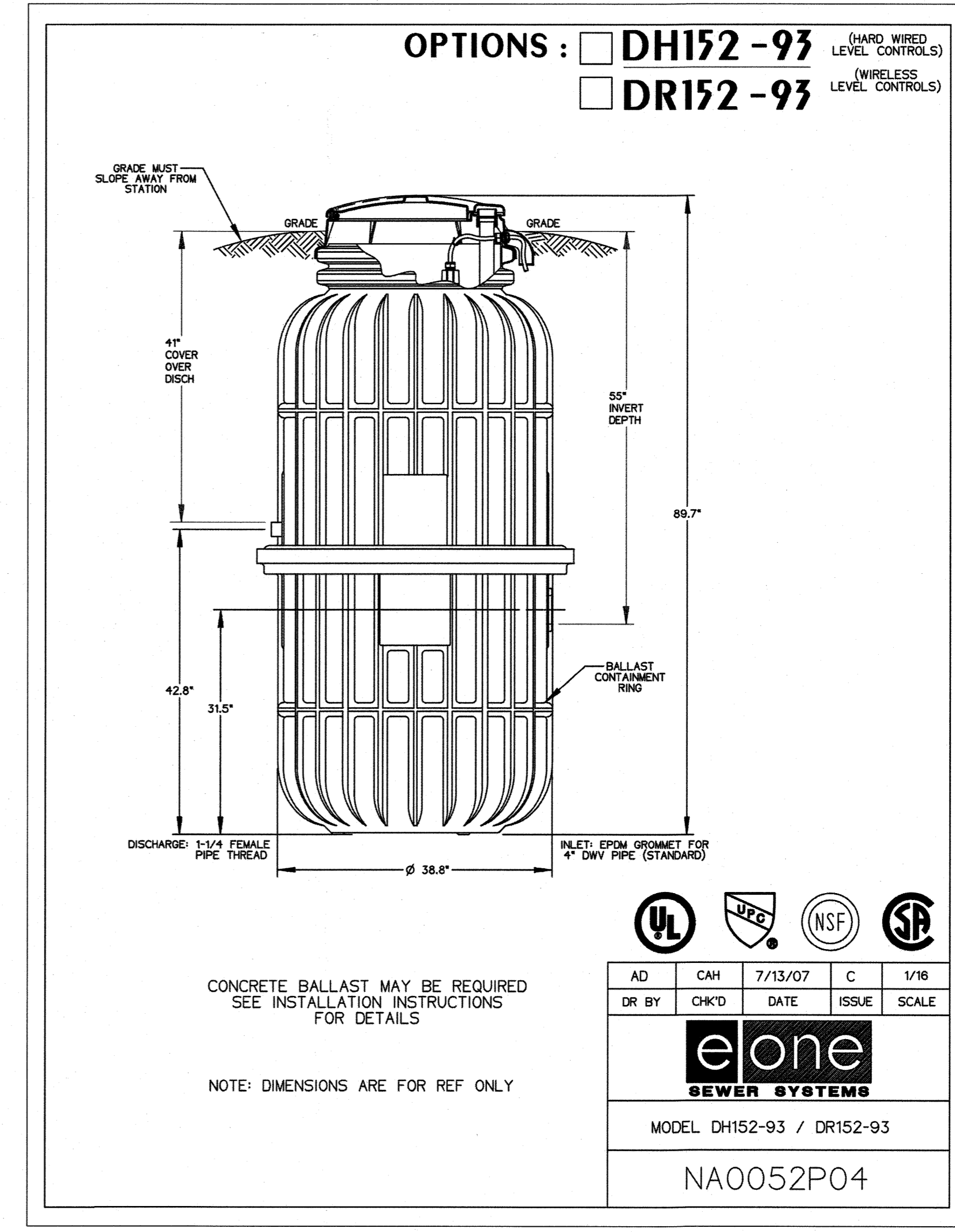


SEMI-POSITIVE DISPLACEMENT TYPE PUMP EACH DIRECTLY DRIVEN BY A 1 HP MOTOR

CONCRETE BALLAST MAY BE REQUIRED SEE INSTALLATION INSTRUCTIONS FOR DETAILS

NOTE: DIMENSIONS ARE FOR REF ONLY

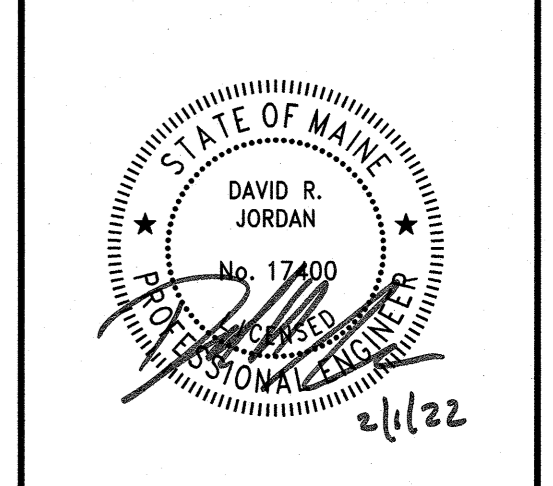
KC	PD	09/30/19	F
DR BY	CHK'D	DATE	ISSUE
eone			
SEWER SYSTEMS			
MODEL DH152 / DR152			
DETAIL SHEET			
NA0052P02			



CONCRETE BALLAST MAY BE REQUIRED SEE INSTALLATION INSTRUCTIONS FOR DETAILS

NOTE: DIMENSIONS ARE FOR REF ONLY

AD	CAH	7/13/07	C	1/16
DR BY	CHK'D	DATE	ISSUE	SCALE
eone				
SEWER SYSTEMS				
MODEL DH152-93 / DR152-93				
NA0052P04				



REVISIONS		
NO.	REVISION	DATE

SITE PLAN AMENDMENT DETAIL SHEET

SCALE: NOT TO SCALE

NEX-2021190

5 OF 5