



CONSULTANTS:

REVISIONS:

PROGRESS PRINT ONLY
Not for Construction
NOVEMBER 15, 2022

DATE:

PROJECT No. 2171

DRAWN BY: RRT, RJS

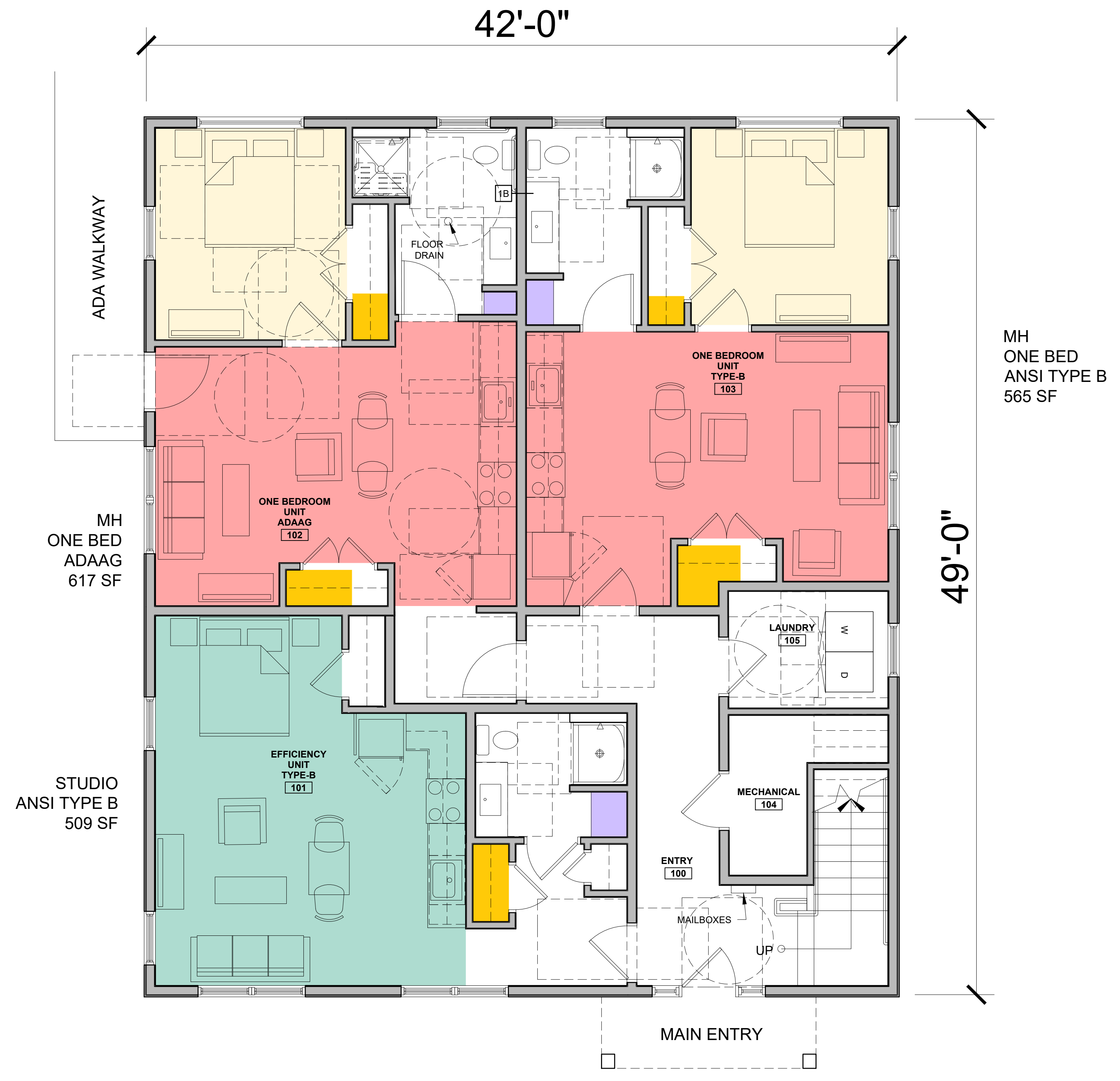
CHECKED BY: RJS

SCALE: AS NOTED

SHEET TITLE:

FIRST FLOOR PLAN

A1-1



- = BEDROOM (120 SF MIN. PRIMARY)
(80 SF MIN. SECONDARY)
- = LIVING / DINING / KITCHEN
(270 SF 1 OR 2 BED) (300 SF 3 BED MIN.)
- = KITCHEN / DINING / LIVING / SLEEPING
(320 SF MIN.)
- = LINEN (10 / 15 SF MIN.)
(2 SF X 5 = 10 SF) (3 SF X 5 = 15 SF)
- = STORAGE (50 / 100 / 150 FT3 MIN.)

1 FIRST FLOOR PLAN
1/4" = 1'-0"



CONSULTANTS:

REVISIONS:

PROGRESS PRINT ONLY
Not for Construction
NOVEMBER 15, 2022

DATE:

PROJECT No. 2171

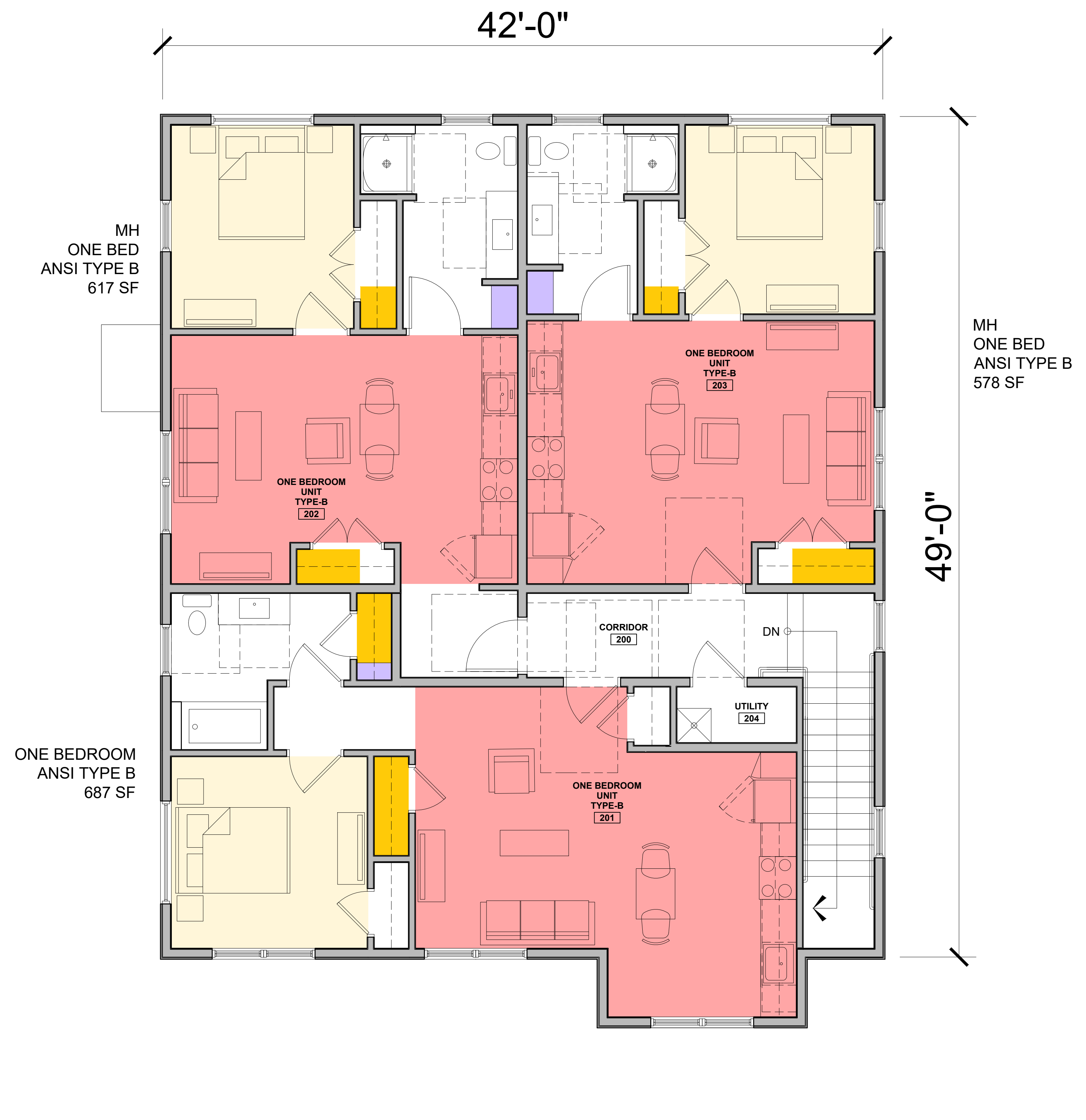
DRAWN BY: RRT, RJS

CHECKED BY: RJS

SCALE: AS NOTED

SHEET TITLE:

SECOND FLOOR PLAN



- = BEDROOM (120 SF MIN. PRIMARY)
(80 SF MIN. SECONDARY)
- = LIVING / DINING / KITCHEN
(270 SF 1 OR 2 BED) (300 SF 3 BED MIN.)
- = KITCHEN / DINING / LIVING / SLEEPING
(320 SF MIN.)
- = LINEN (10 / 15 SF MIN.)
(2 SF X 5 = 10 SF) (3 SF X 5 = 15 SF)
- = STORAGE (50 / 100 / 150 FT3 MIN.)

1 SECOND FLOOR PLAN
1/4" = 1'-0"

APARTMENTS
22 SHAPLEIGH ROAD
KITTERY, MAINE



RYAN SENATORE ARCHITECTURE
500 CONGRESS STREET, SUITE 2
PORTLAND, MAINE 04101
P: 207-747-5159
C: 207-650-6414
senatorearchitecture.com

CONSULTANTS:

REVISIONS:

PROGRESS PRINT ONLY
Not for Construction
NOVEMBER 15, 2022

DATE:

PROJECT No. 2171

DRAWN BY: RRT, RJS

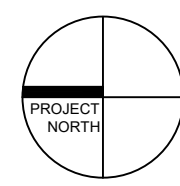
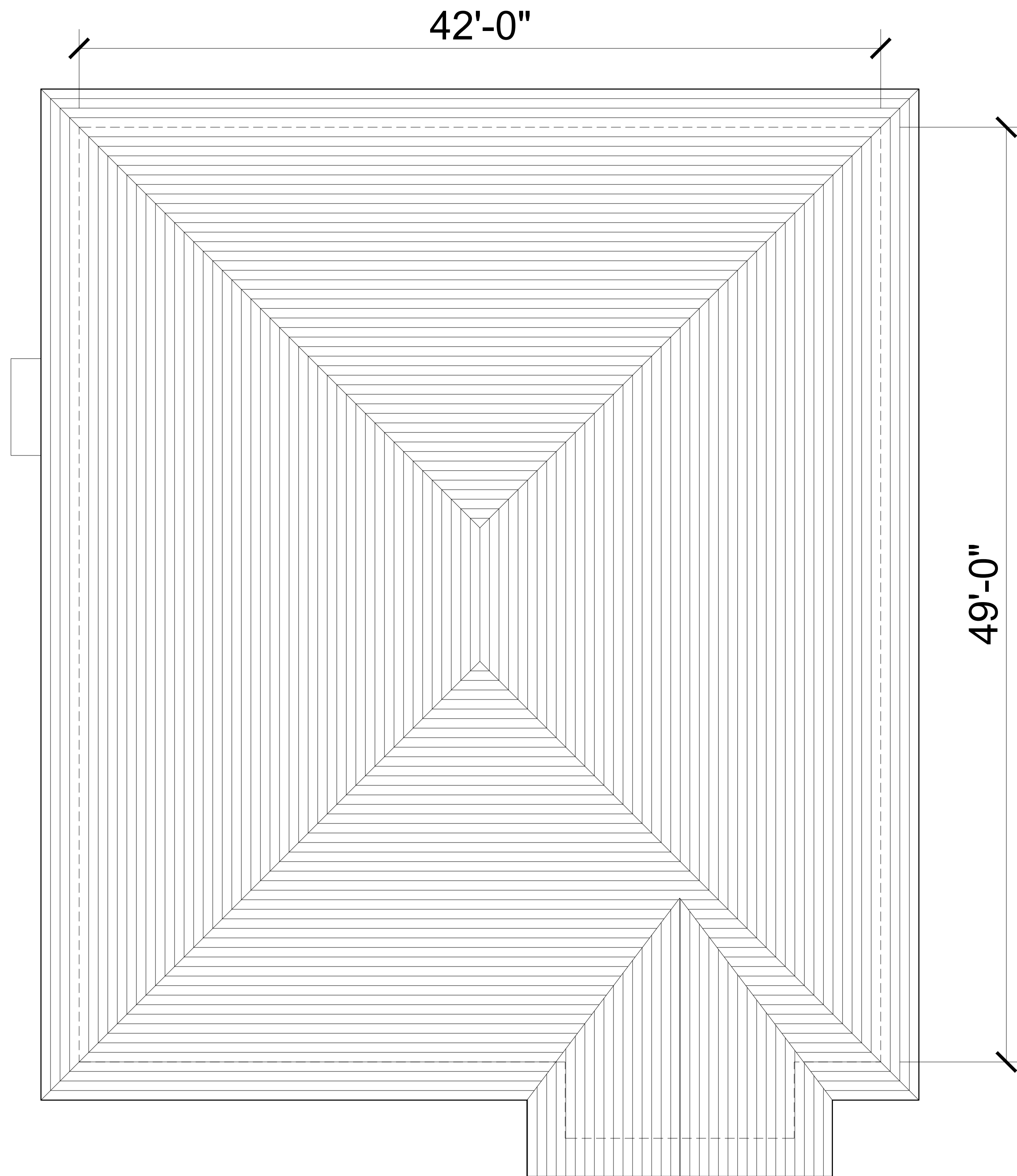
CHECKED BY: RJS

SCALE: AS NOTED

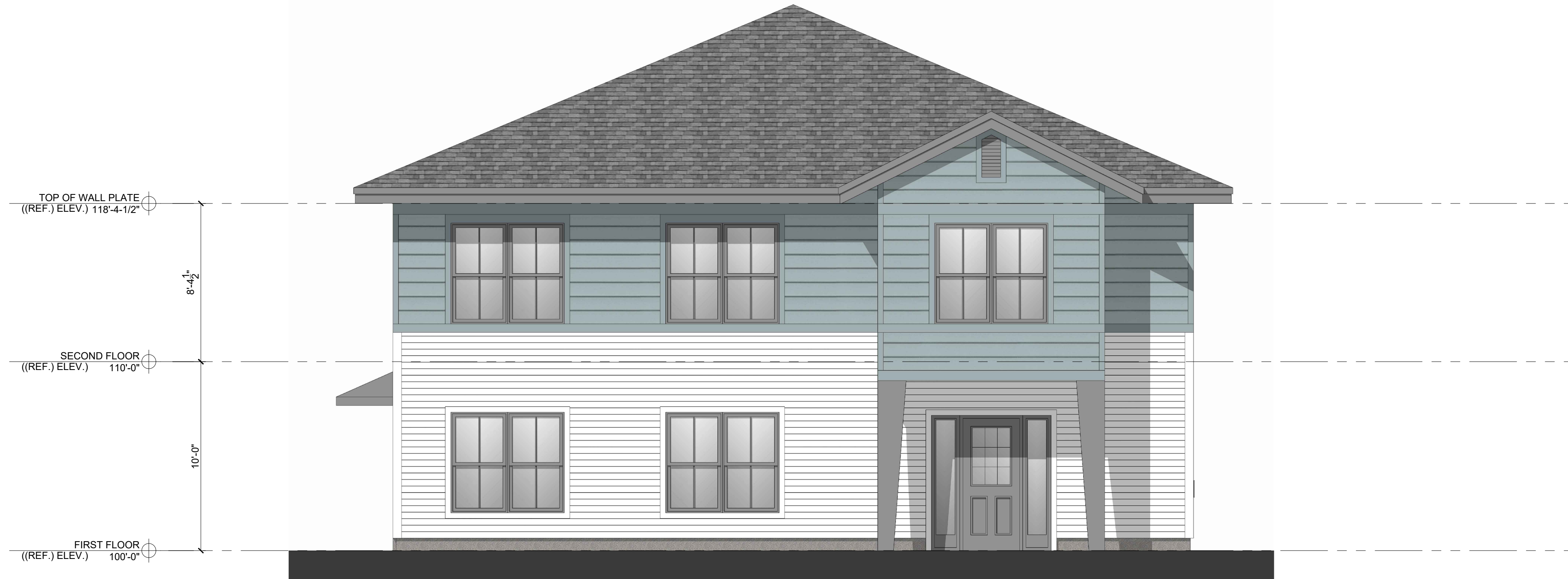
SHEET TITLE:

ROOF PLAN

A1-3



1 ROOF PLAN
1/4" = 1'-0"



2 WEST ELEVATION
1/4" = 1'-0"



1 SOUTH ELEVATION
1/4" = 1'-0"



CONSULTANTS:

REVISIONS:

PROGRESS PRINT ONLY
Not for Construction
NOVEMBER 15, 2022

DATE:

PROJECT No. 2171

DRAWN BY: RRT, RJS

CHECKED BY: RJS

SCALE: AS NOTED

SHEET TITLE:

ELEVATIONS

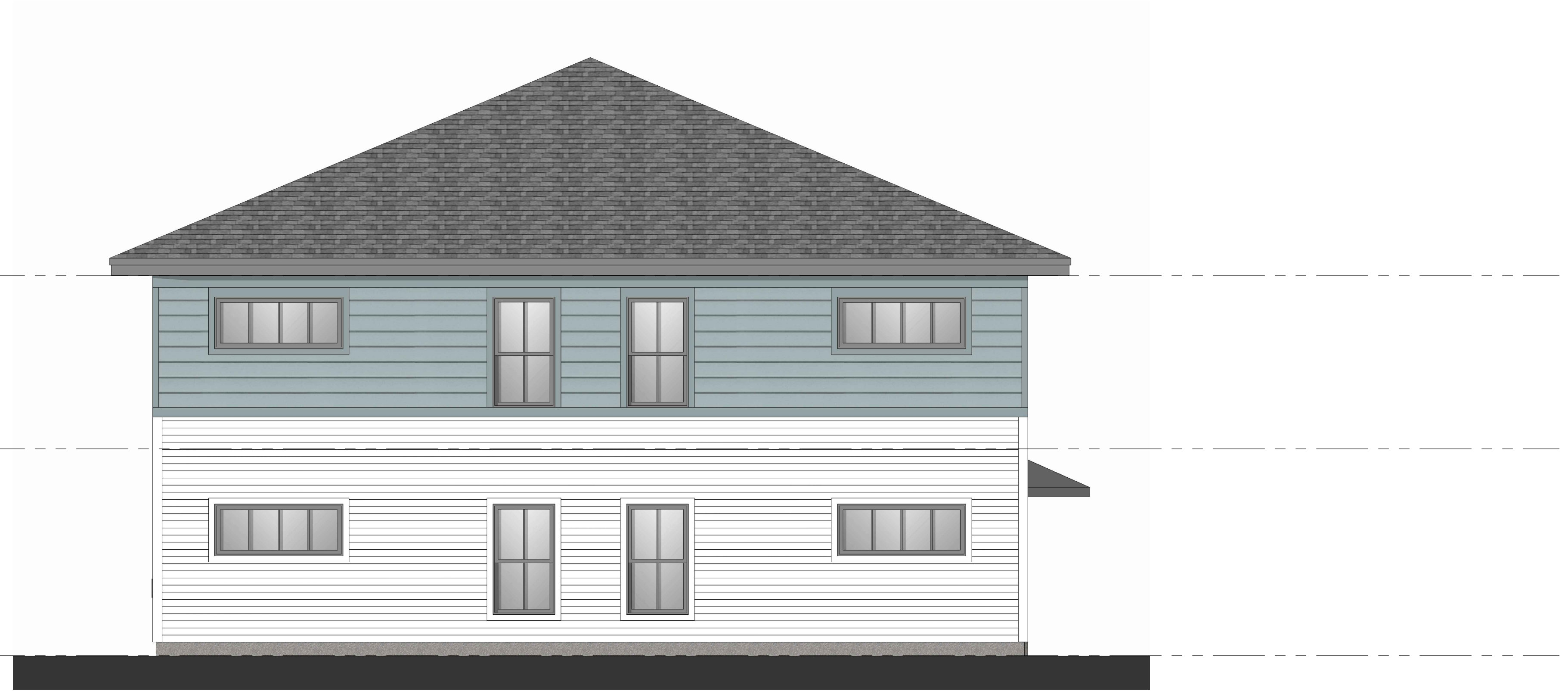
TOP OF WALL PLATE
((REF.) ELEV.) 118'-4-1/2"

8'-4 1/2"

SECOND FLOOR
((REF.) ELEV.) 110'-0"

10'-0"

FIRST FLOOR
((REF.) ELEV.) 100'-0"



2 EAST ELEVATION
1/4" = 1'-0"

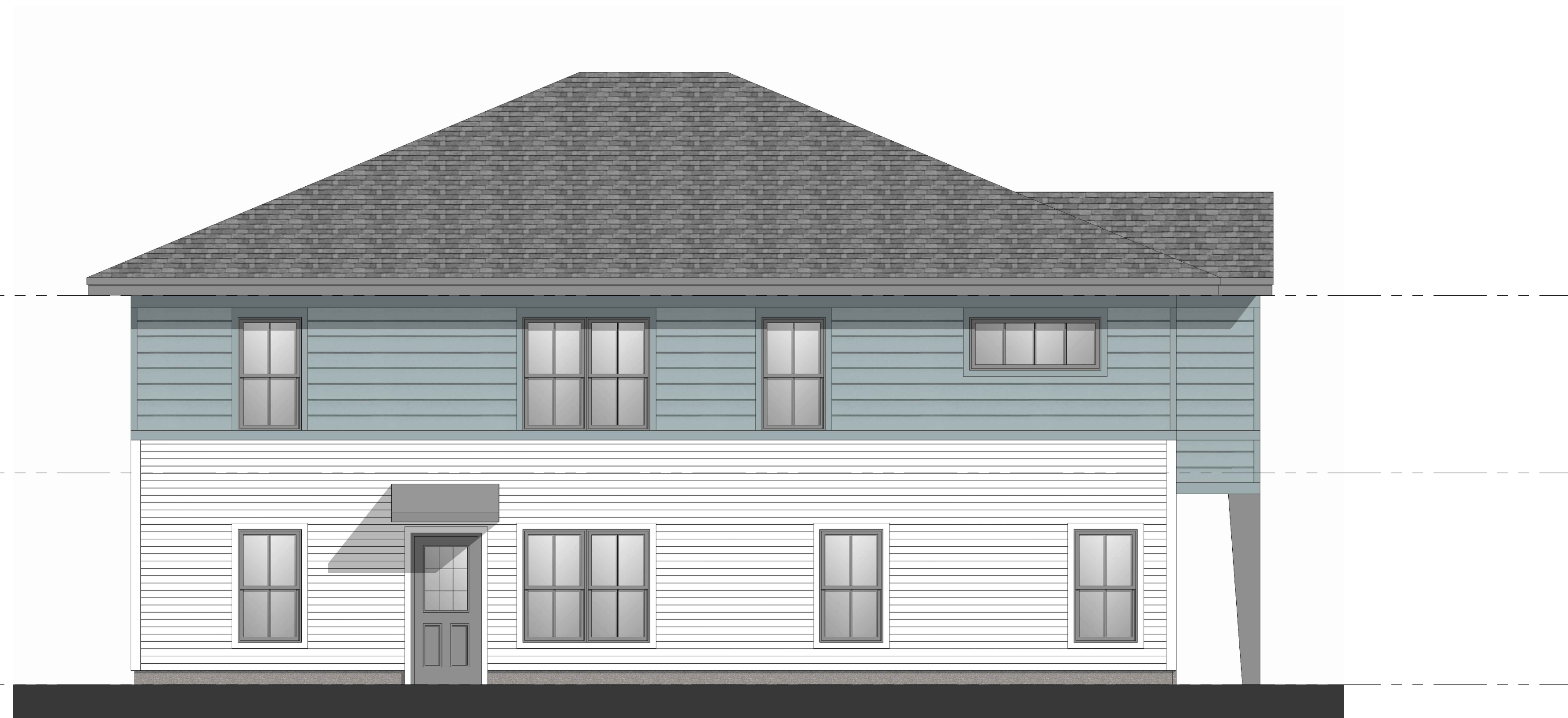
TOP OF WALL PLATE
((REF.) ELEV.) 118'-4-1/2"

8'-4 1/2"

SECOND FLOOR
((REF.) ELEV.) 110'-0"

10'-0"

FIRST FLOOR
((REF.) ELEV.) 100'-0"



1 NORTH ELEVATION
1/4" = 1'-0"

© 2022 RYAN SENATORE
ARCHITECTURE

APARTMENTS
22 SHAPLEIGH ROAD
KITTERY, MAINE

RSA

RYAN SENATORE
ARCHITECTURE
500 CONGRESS STREET, SUITE 2
PORTLAND, MAINE 04101
O: 207-747-5159
C: 207-650-6414
senatorearchitecture.com

CONSULTANTS:

REVISIONS:

PROGRESS PRINT ONLY
Not for Construction
NOVEMBER 15, 2022

DATE:

PROJECT No. 2171

DRAWN BY: RRT, RJS

CHECKED BY: RJS

SCALE: AS NOTED

SHEET TITLE:

ELEVATIONS

A2-1

RESIDENCES

22 SHAPLEIGH RD, KITTERY, MAINE

NOVEMBER 11, 2022



1 COLOR OPTION 1-1
NTS

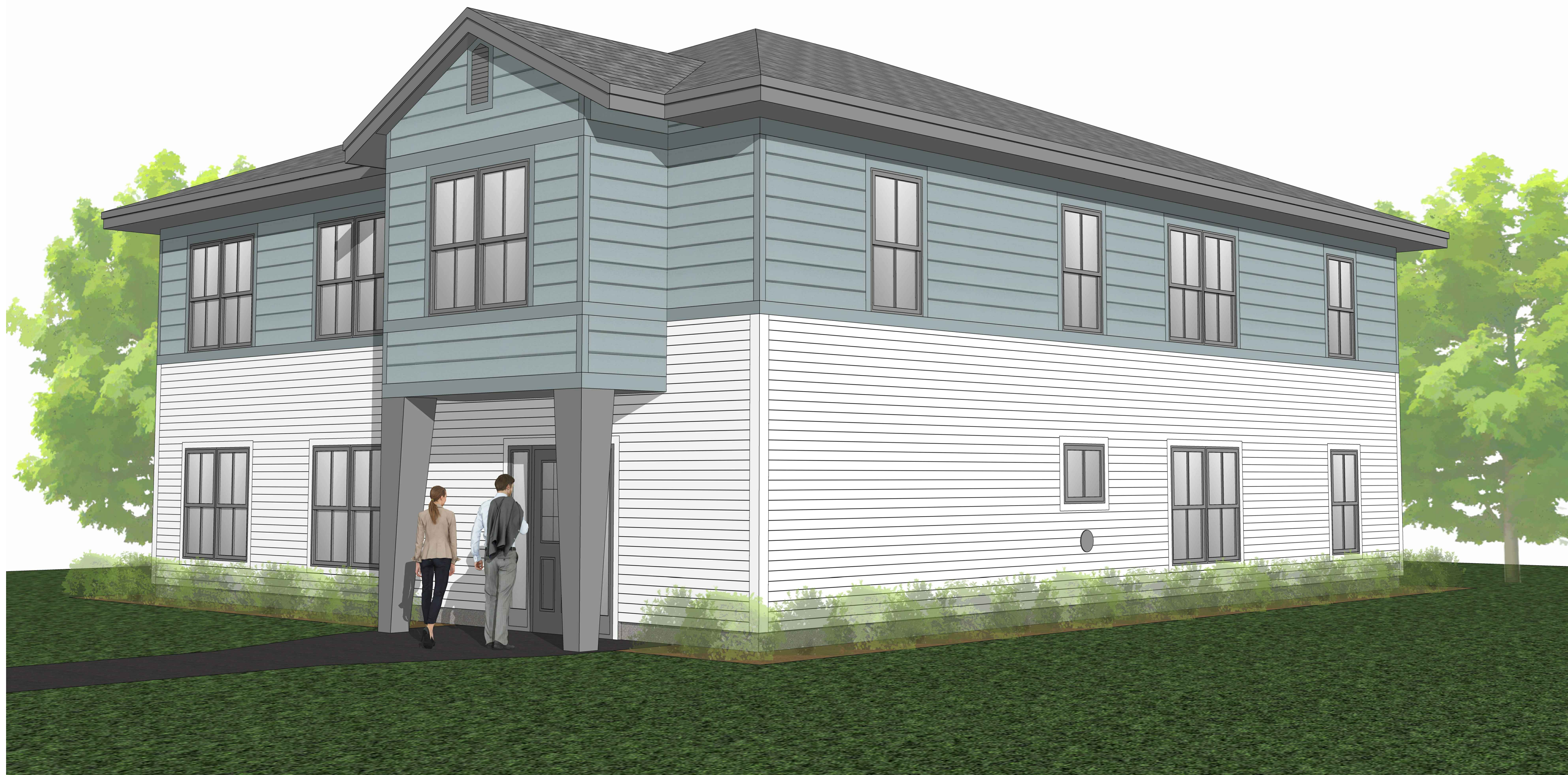
PROGRESS PRINT ONLY
Not for Construction

RYAN SENATORE **ARCHITECTURE**

RESIDENCES

22 SHAPLEIGH RD, KITTERY, MAINE

NOVEMBER 11, 2022



1 COLOR OPTION 1-2
NTS

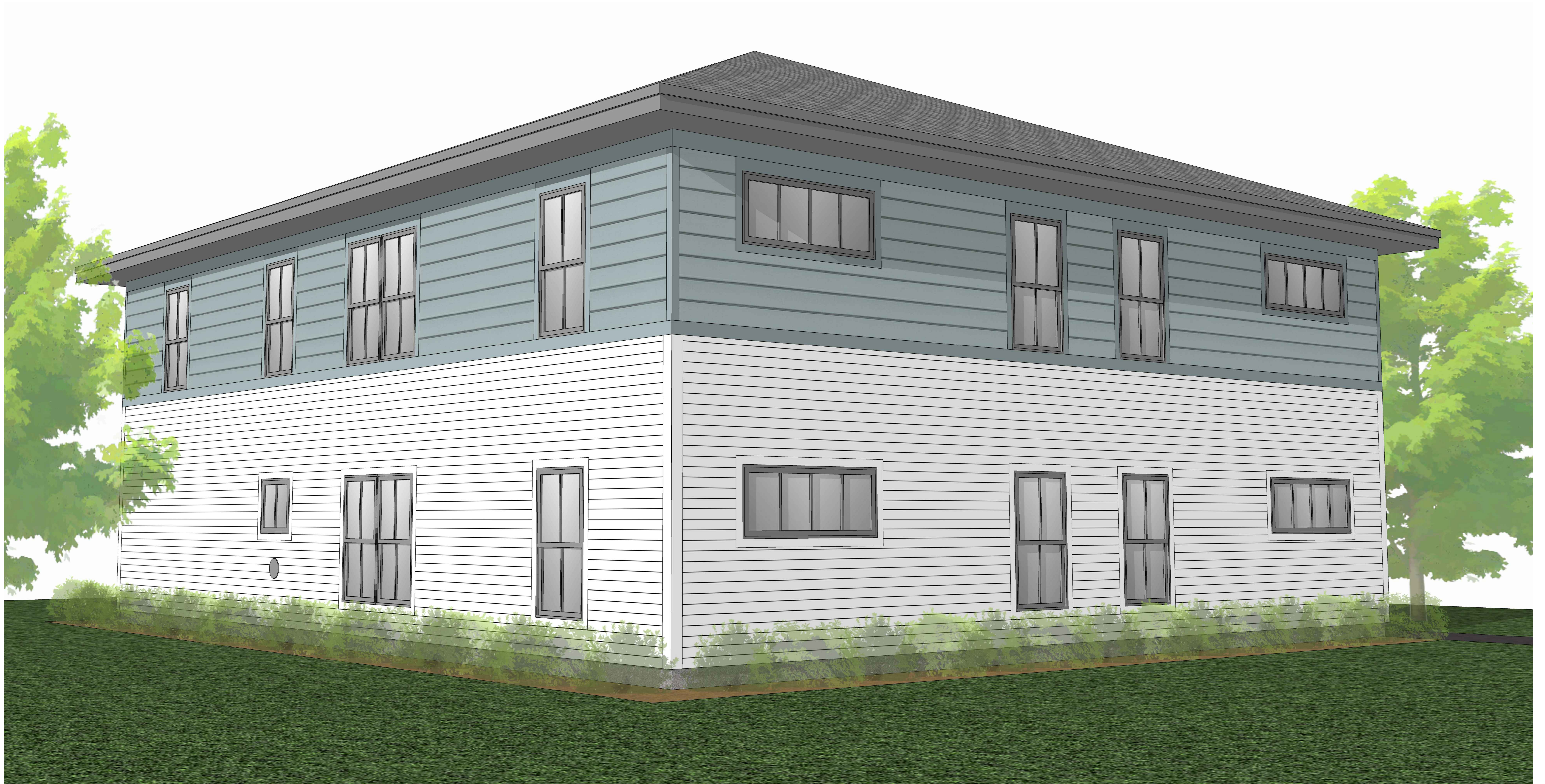
PROGRESS PRINT ONLY
Not for Construction

RYAN SENATORE **ARCHITECTURE**

RESIDENCES

22 SHAPLEIGH RD, KITTERY, MAINE

NOVEMBER 11, 2022



1 COLOR OPTION 1-3
NTS

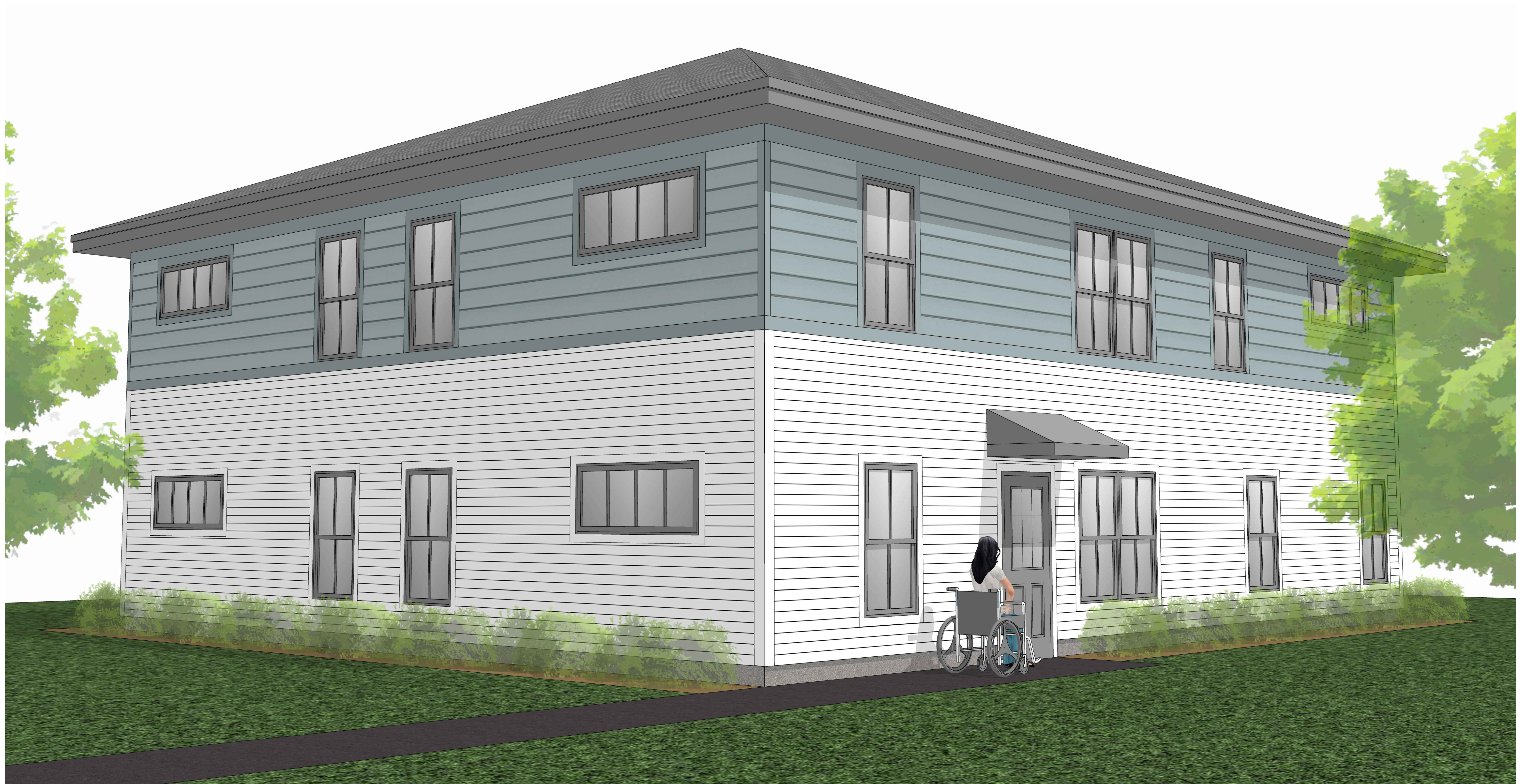
PROGRESS PRINT ONLY
Not for Construction

RYAN SENATORE **ARCHITECTURE**

RESIDENCES

22 SHAPLEIGH RD, KITTERY, MAINE

NOVEMBER 11, 2022



1 COLOR OPTION 1-4
NTS

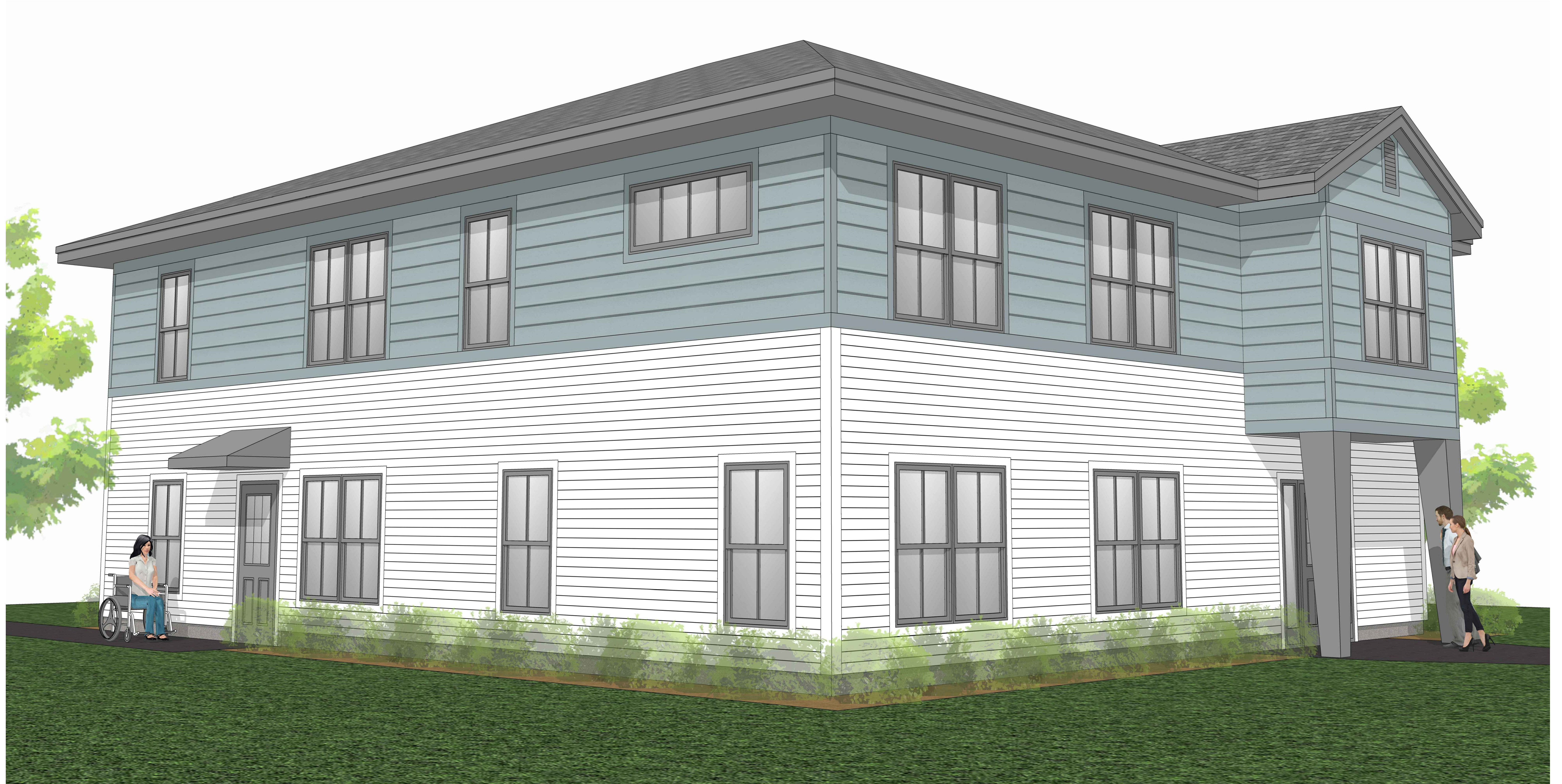
PROGRESS PRINT ONLY
Not for Construction

RYAN SENATORE **ARCHITECTURE**

RESIDENCES

22 SHAPLEIGH RD, KITTERY, MAINE

NOVEMBER 11, 2022



1 COLOR OPTION 1-5
NTS

PROGRESS PRINT ONLY
Not for Construction

RYAN SENATORE **ARCHITECTURE**