



RICE LIBRARY BUILDING COMMITTEE
December 10, 2019
6PM
KITTERY COMMUNITY CENTER
AGENDA



1. Project Update
 - a. Design and Construction Schedule
 - b. Subcommittees
 - i. Technology
 - ii. Furniture
 - c. RFQ for Owners Agent

2. Design Status (Scott Simons Architects)
 - a. Recap of Schematic Design and Feedback
 - b. Design Development Kick-Off
 - i. Design Development Schedule
 - ii. Working Session
 - c. Review Design Process
 - i. Discuss Action Items

3. Next Meeting
 - a. Committee Meeting Schedule Going Forward
 - b. Committee Action Items
 - c. SSA Team Action Items

Materials (also in Drop Box):

- Design and Schedule Update



Rice Public Library

December 2, 2019

MEETING POSTPONED TO DECEMBER 10, 2019



Scott Simons - Principal

Ryan Kanteres - Project Architect



Michael Lassel - Principal

Sarah Hourihane - Project Architect

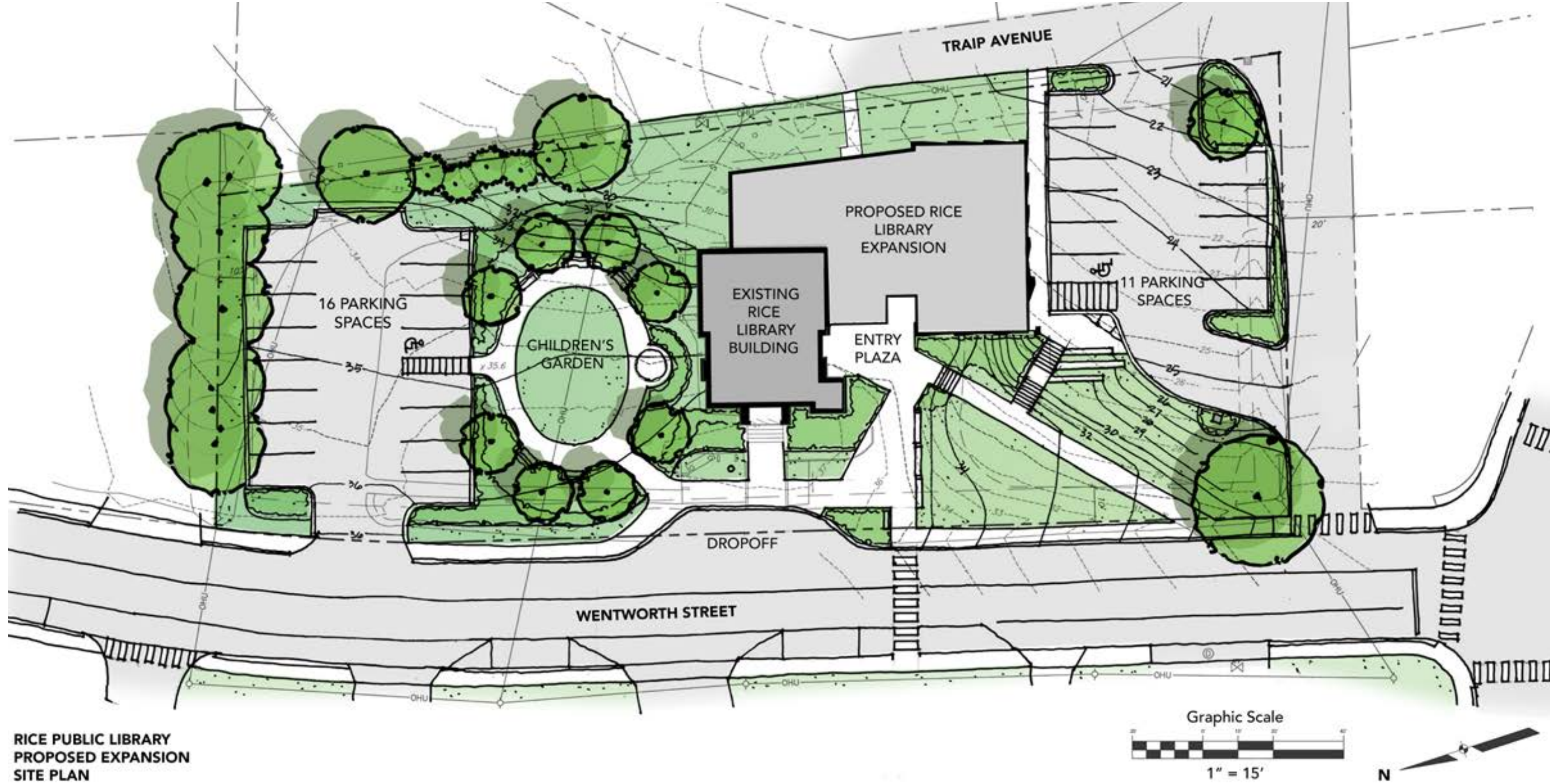
Curtis Boivin - Architect



Recap of Schematic Design



Rice Public Library - Site Plan



RICE PUBLIC LIBRARY
PROPOSED EXPANSION
SITE PLAN

June 6, 2019

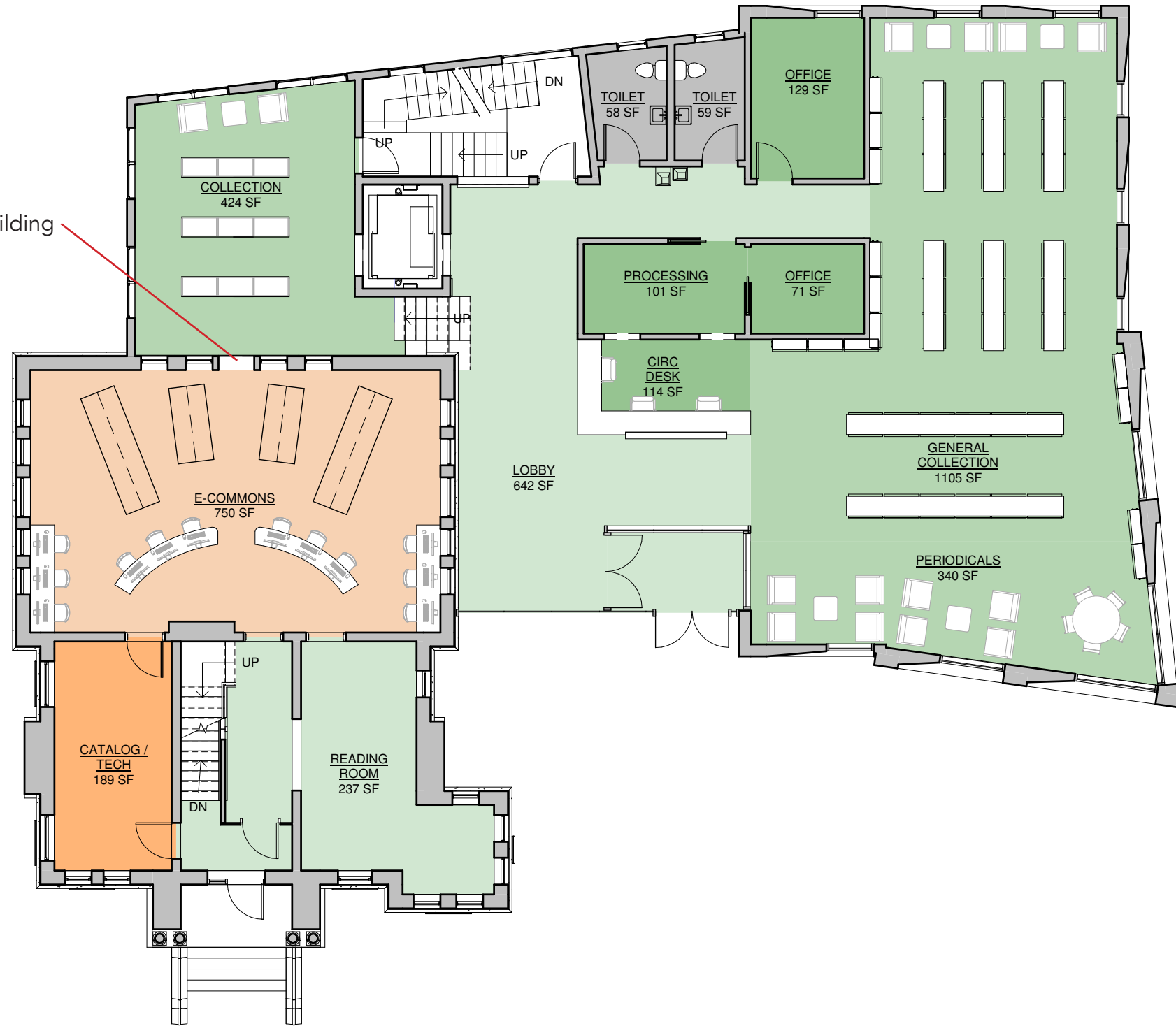
Rice Public Library- Lower Level Floor Plan



June 26, 2019

South Scheme - First Floor Plan

Develop Openings to Existing Building



South Scheme - Second Floor Plan



June 26, 2019

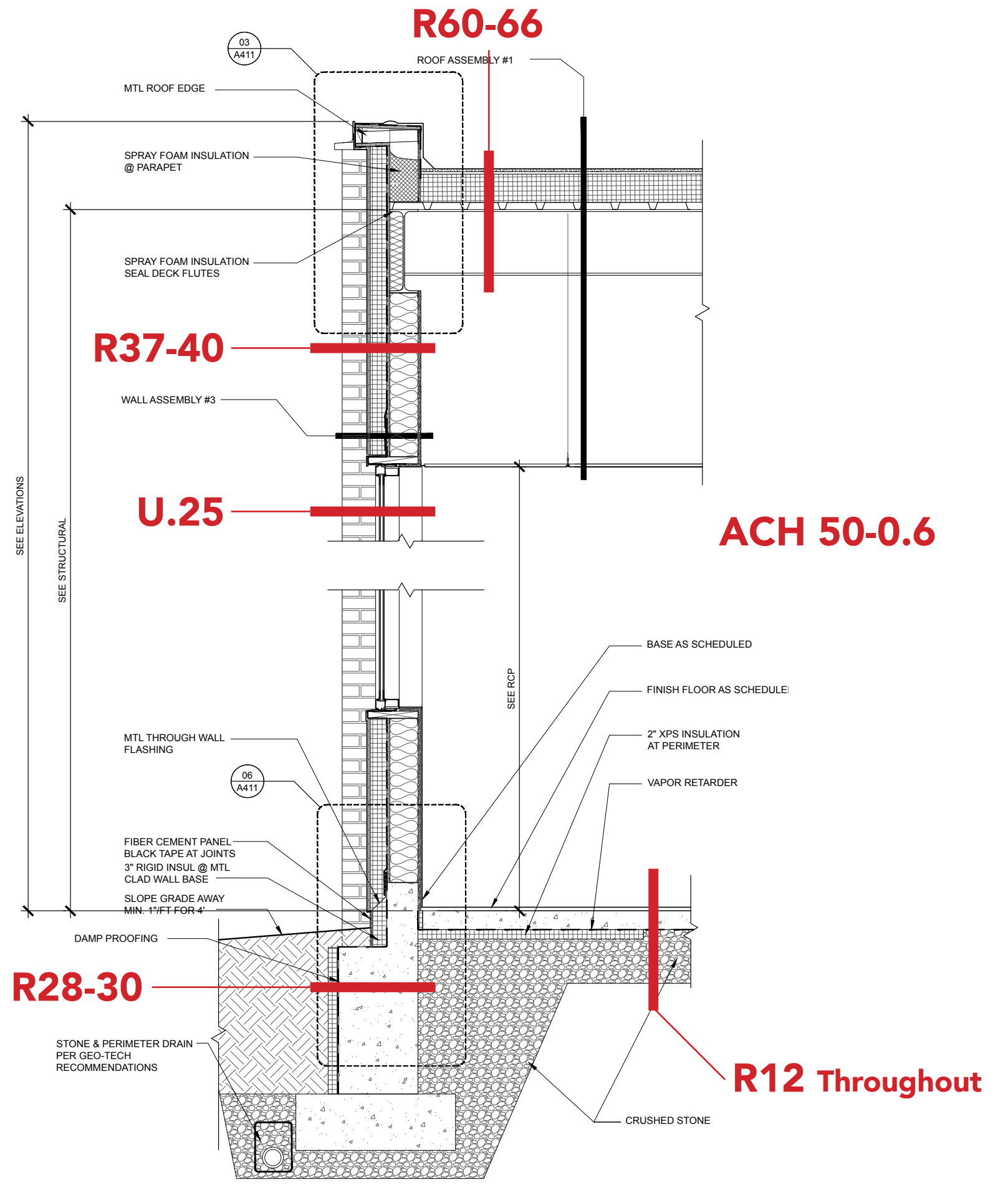
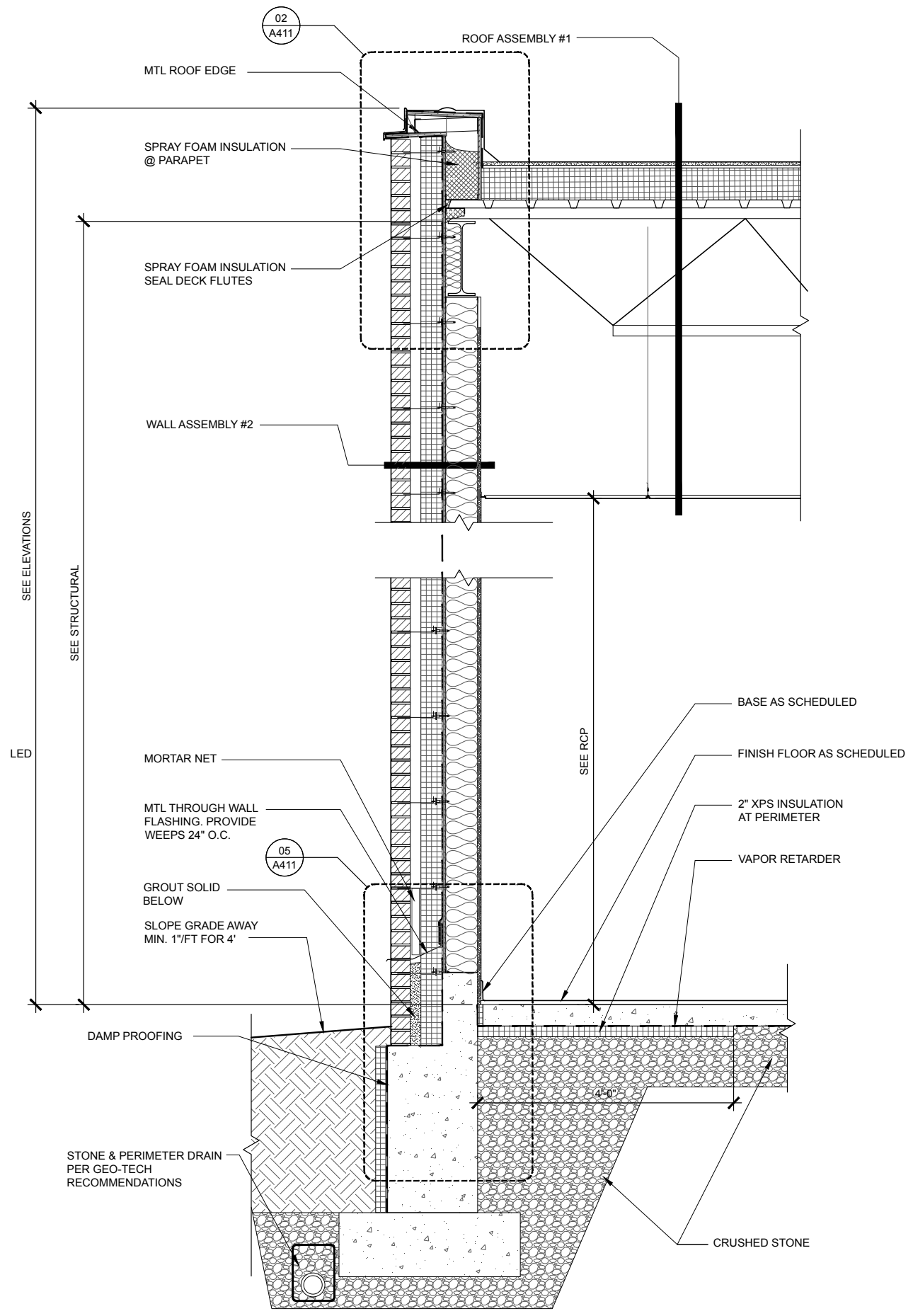


Design Development Kickoff

Rice Public Library	Design																	
Updated November 26, 2019	Nov			Dec					Jan				Feb				Mar	
Week Beginning	11	18	25	2	9	16	23	31	6	13	20	27	3	10	17	24	2	9
Meetings with the Building Committee				▲				▲			▲			▲			▲	
Planning Board Approvals																		
Pre-application meeting																		
Submit Application																		
Alt Planning Board Meeting (12/19-1/9, 1/9-1/23, 2/13-2/27)									▲			▲					▲	
Board of Appeals (12/24 - 1/14)										▲								
Planning Board Meeting (1/3 - 1/23, 2/6 - 2/27)											▲						▲	
State Fire Marshal Review																		
Design Development Phase (12 Weeks)				1	2	3	4	5	6	7	8	9	10	11	12			
DD Kickoff (Dec 3)				▲														
Issue DD set for Pricing and Coordination (Feb 17)																		▲
Owner Review																		
DD Cost Estimate																		
Complete HVAC comfort survey						▲												
Exterior Material Selection								▲										
Finish Selections (Major only)								▲										
Finish Selections (Additional items)												▲						
Plumbing Fixtures												▲						
Lighting Selections												▲						
Shelving Furniture Inventory												▲						
Circulation Desk												▲						
Landscape Selections														▲				
Tech and Security (First Draft)														▲				

DESIGN DEVELOPMENT SCHEDULE

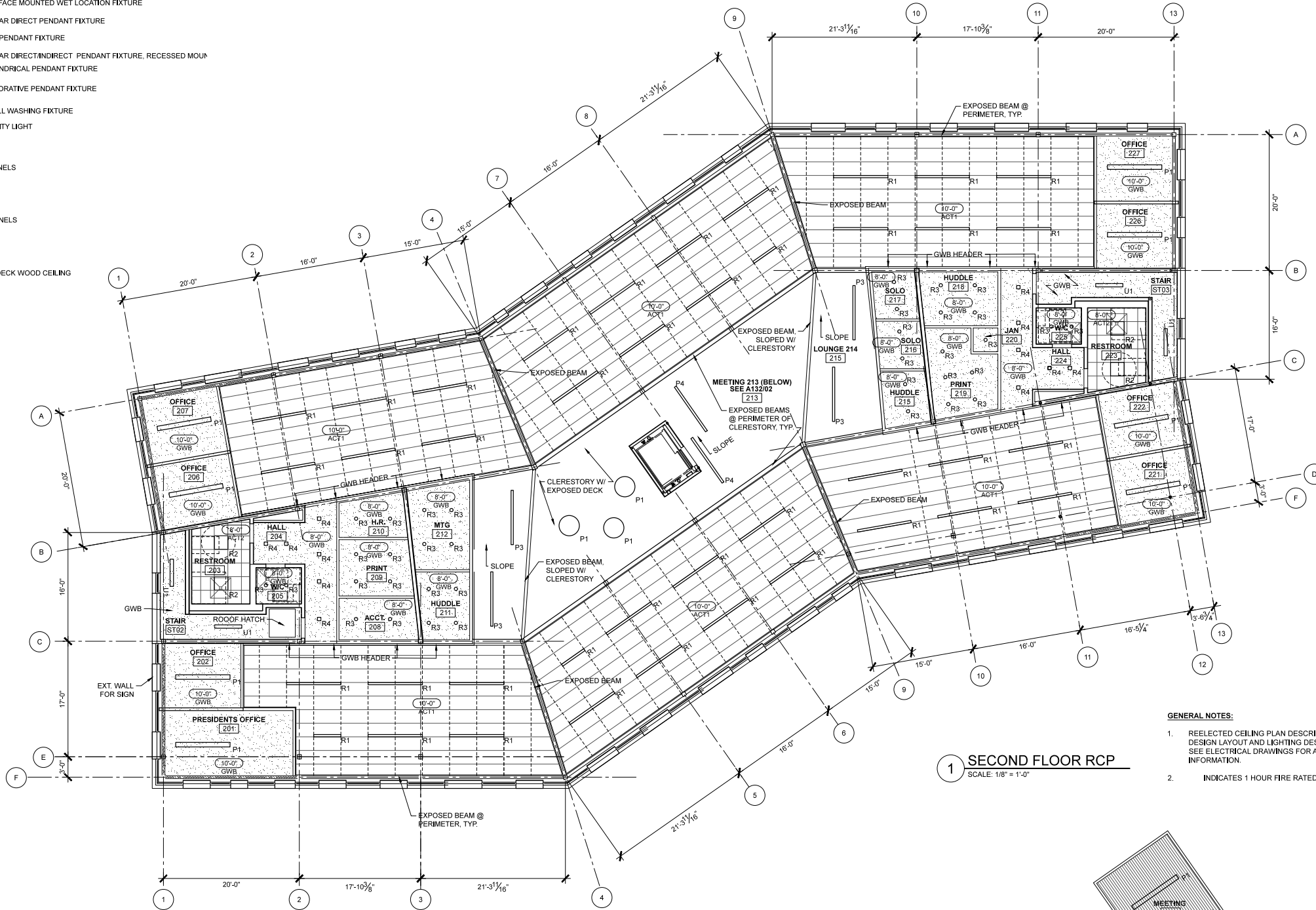
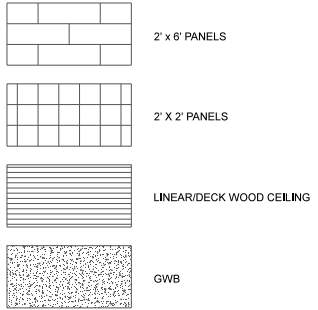




Building Assemblies

LEGEND

- R1 - RECESSED LINEAR FIXTURE
- R2 - RECESSED RECTANGULAR FIXTURE
- R3 - RECESSED ROUND DOWN LIGHT
- R4 - RECESSED SQUARE DOWN LIGHT
- S1 - SURFACE MOUNTED FIXTURE
- S2 - SURFACE MOUNTED WET LOCATION FIXTURE
- P1 - LINEAR DIRECT PENDANT FIXTURE
- P2 - LED PENDANT FIXTURE
- P3 - LINEAR DIRECT/INDIRECT PENDANT FIXTURE, RECESSED MOUNT
- P4 - CYLINDRICAL PENDANT FIXTURE
- P5 - DECORATIVE PENDANT FIXTURE
- W1 - WALL WASHING FIXTURE
- U1 - UTILITY LIGHT

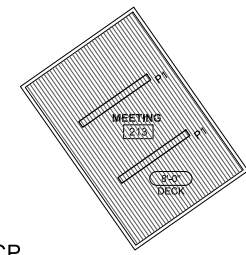


GENERAL NOTES:

1. REFLECTED CEILING PLAN DESCRIBES CEILING DESIGN LAYOUT AND LIGHTING DESIGN INTENT. SEE ELECTRICAL DRAWINGS FOR ADDITIONAL INFORMATION.
2. INDICATES 1 HOUR FIRE RATED CEILING ASSE

1 SECOND FLOOR RCP
SCALE: 1/8" = 1'-0"

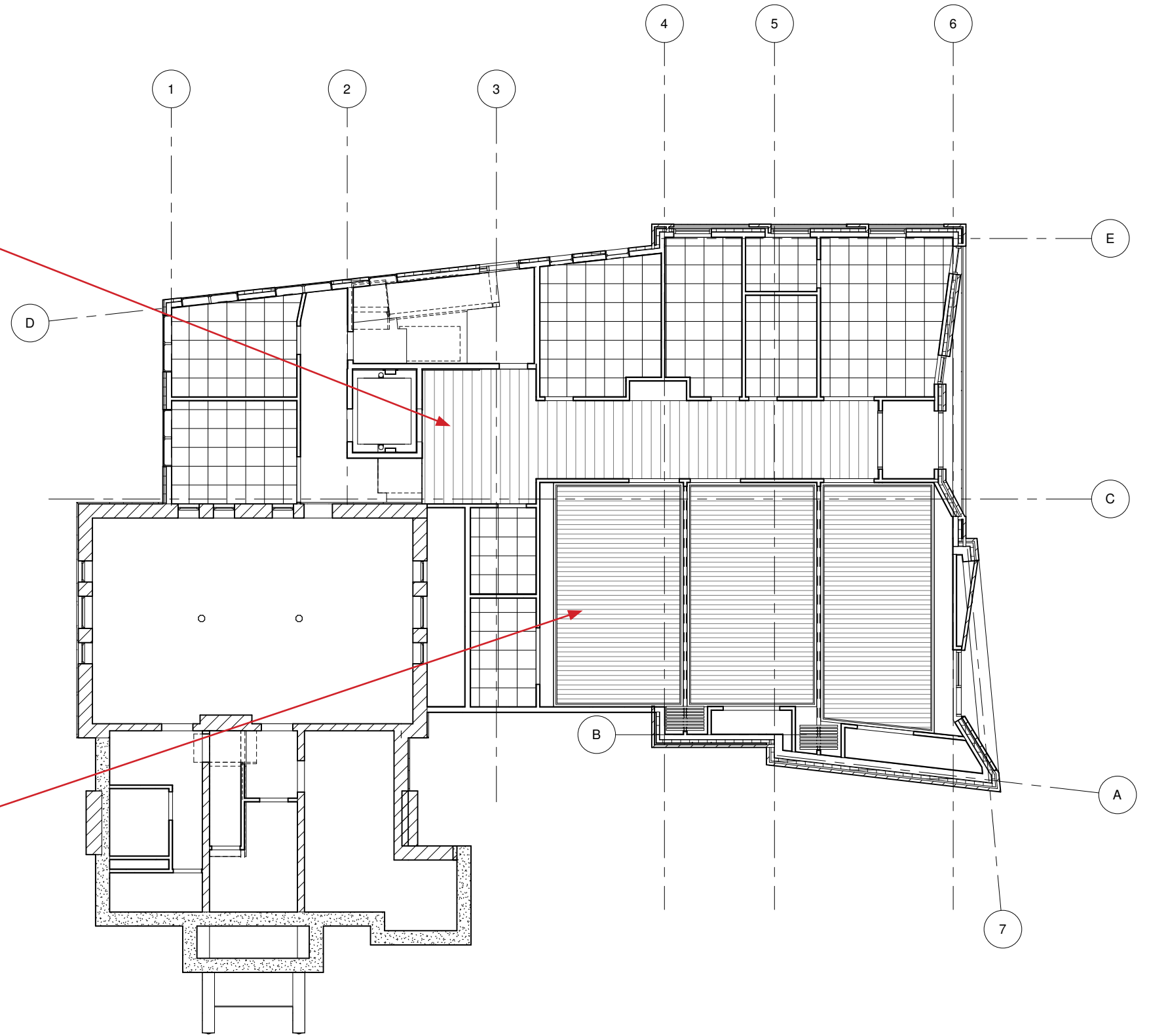
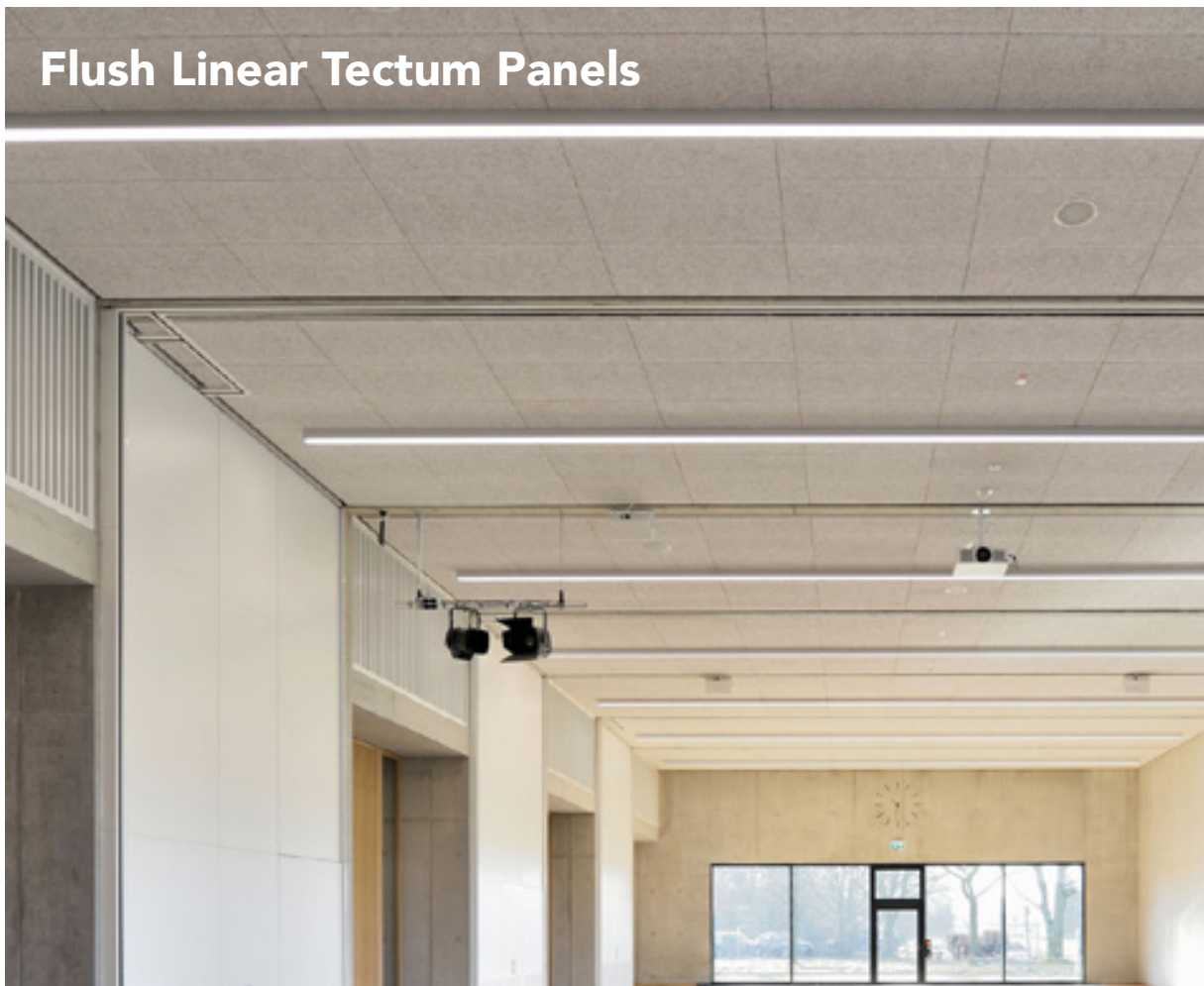
2 MEETING 213 RCP
SCALE: 1/8" = 1'-0"



Linear ACT

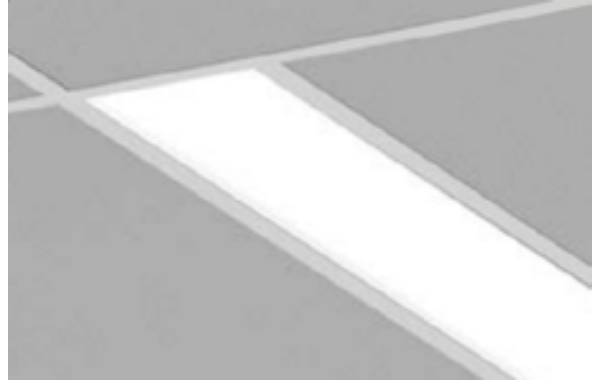


Flush Linear Tectum Panels



① LOWER LEVEL
1/8" = 1'-0"

Reflected Ceiling Plans



R1 Recessed Linear



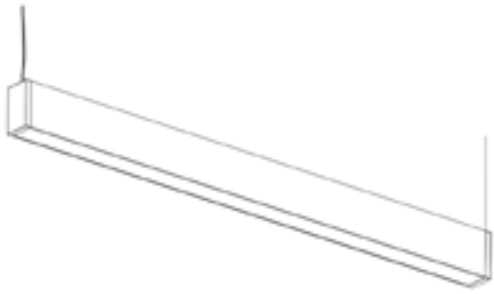
R2 Recessed Rectangular



R3 Recessed Down Round



R4 Recessed Down Square

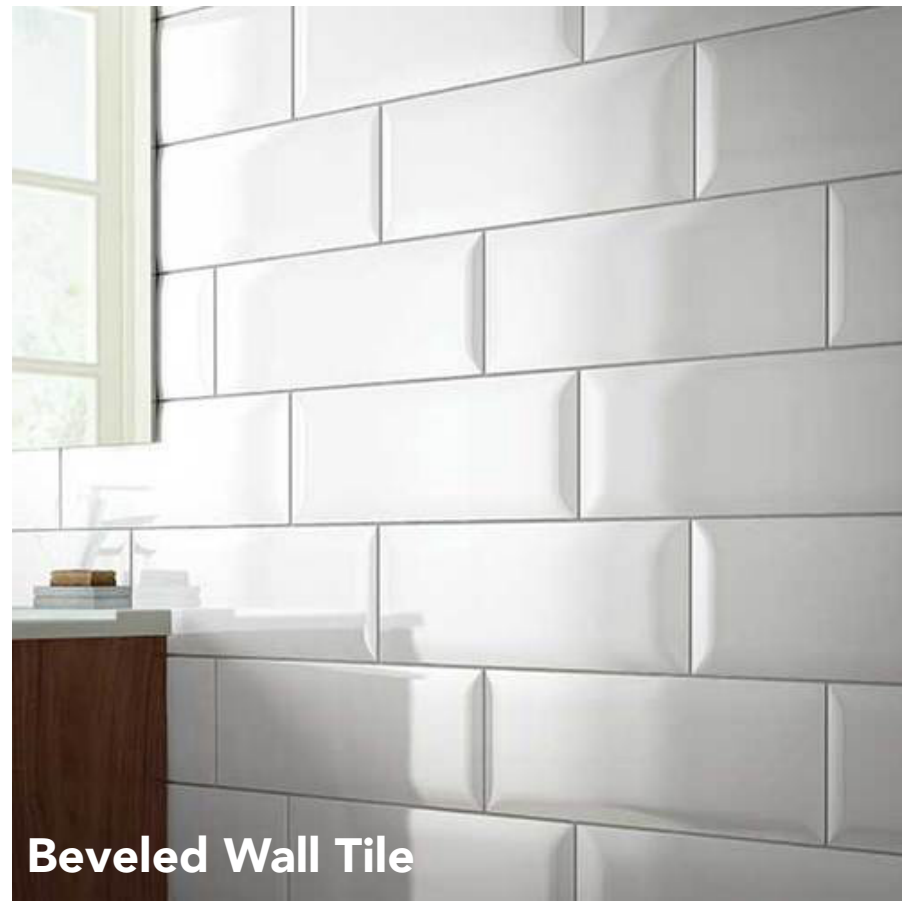
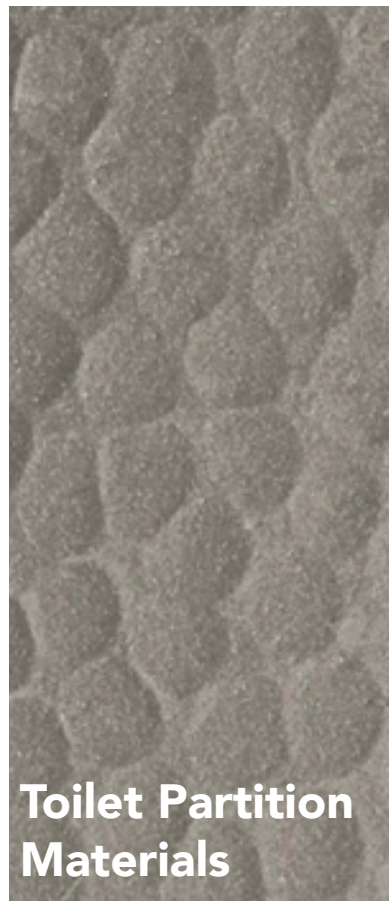
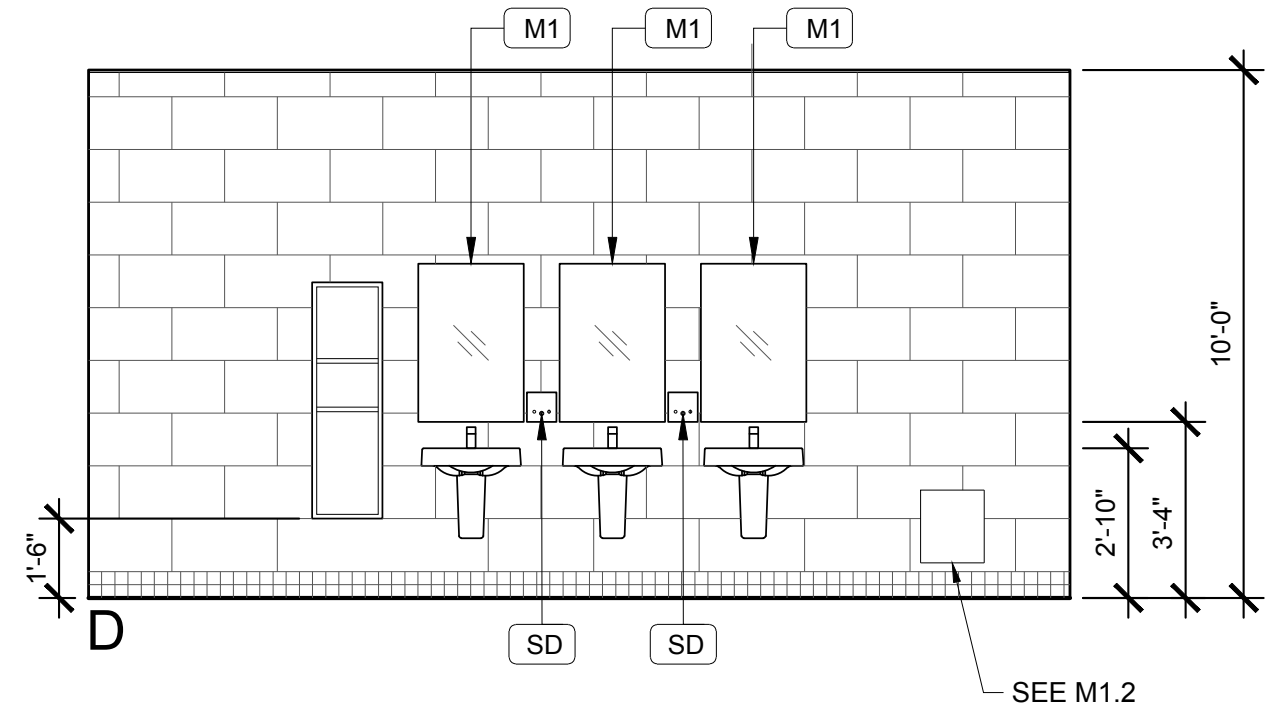
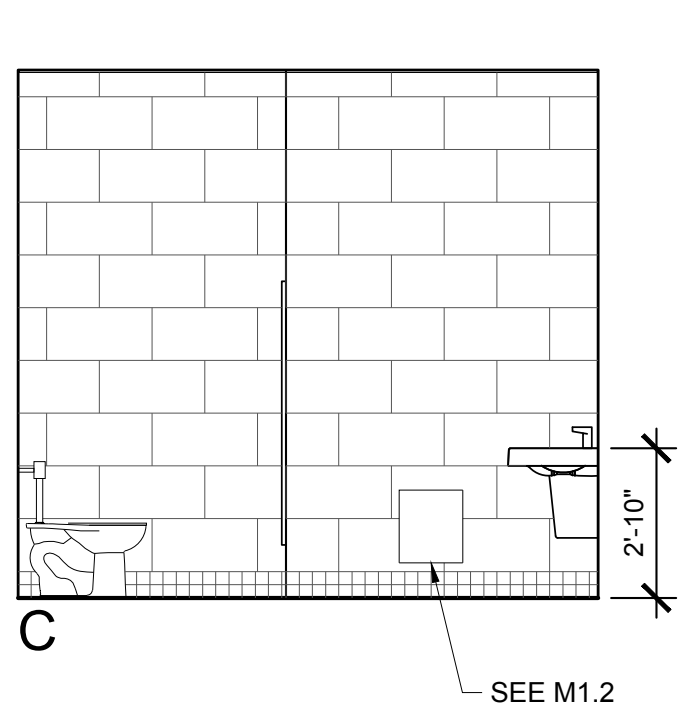


P3 Pendant



P4 Pendant

LIGHT FIXTURES





P1 Wall Hung Toilet with automatic flush control



P2 Floor Mounted Toilet with automatic flush control



P3 Wall Mounted Urinal



P4 Wall Hung Lavatory Rectangular



P5 Drinking Fountain



P6 Recessed bottle filling station

Plumbing Fixture Direction:

Wall Mounted Toilets vs. Floor Mounted:

- Floor mounted - easier to install less infrastructure
- Wall mounted - are easier to clean around
- Wall mounted - infrastructure reduces room size

Bottle Filling Station vs. Gooseneck Filler



Recessed Paper Towel and
Trash Dispenser
(ADA Compliant)



Dyson Airblade V
Hand Dryer



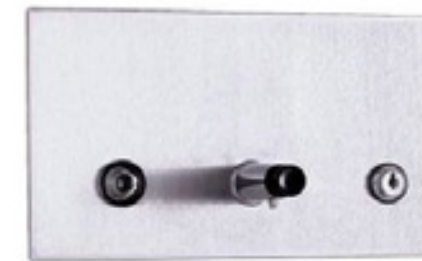
Stainless Steel Grab Bars
with Satin or Peened Finish



Wall Mounted Bobrick
Soap Dispenser

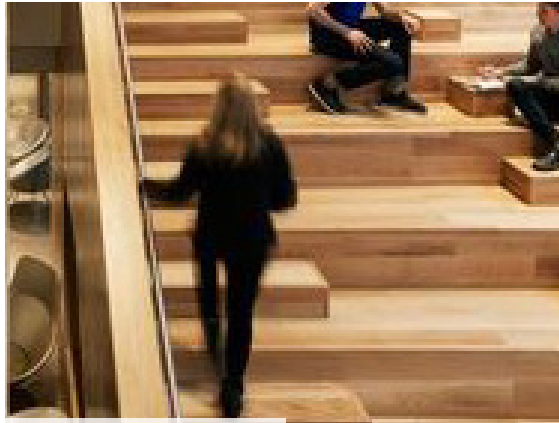


Wall Mounted Bobrick
Automatic Soap Dispenser

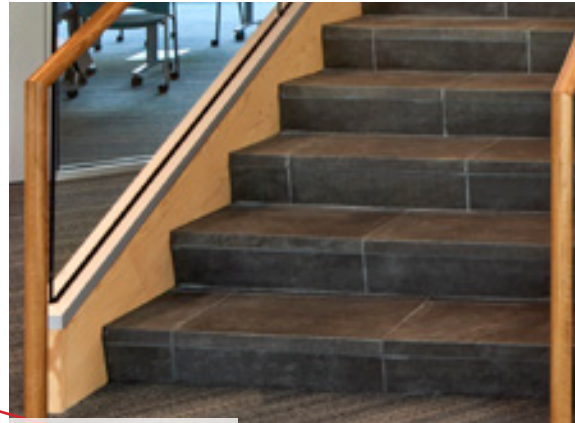


Recessed Bobrick
Automatic Soap Dispenser

PLUMBING ACCESSORIES



Wooden Steps



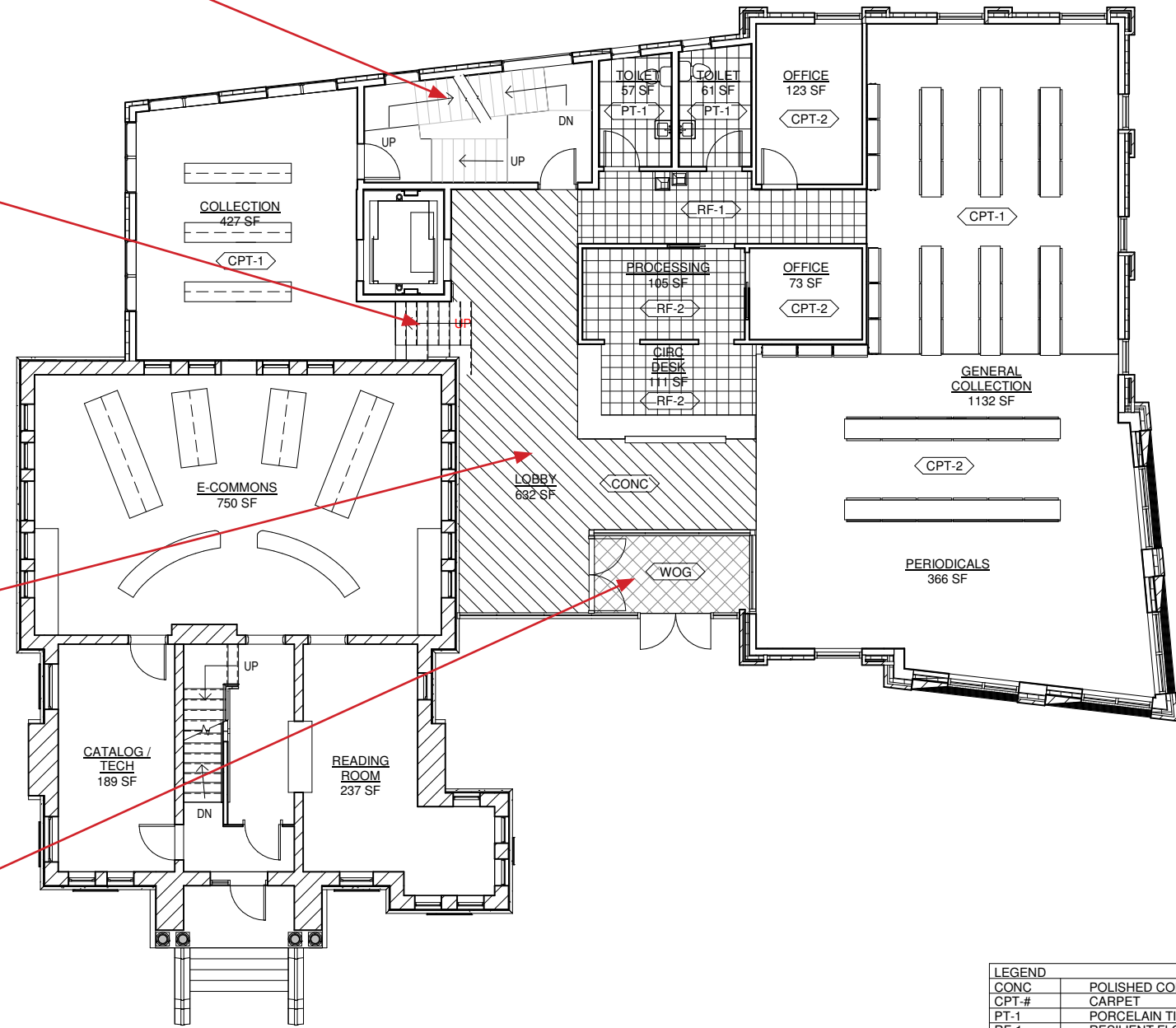
Slate Steps



Polished Concrete Entry



Walk-off Grate



② FIRST FLOOR FINISH PLAN
1/8" = 1'-0"

LEGEND	
CONC	POLISHED CONCRETE
CPT-#	CARPET
PT-1	PORCELAIN TILE 1
RF-1	RESILIENT FLOORING 1
RF-2	RESILIENT FLOORING 2
WOG	WALK-OFFGRATE
WD	WOOD



Resilient Floor



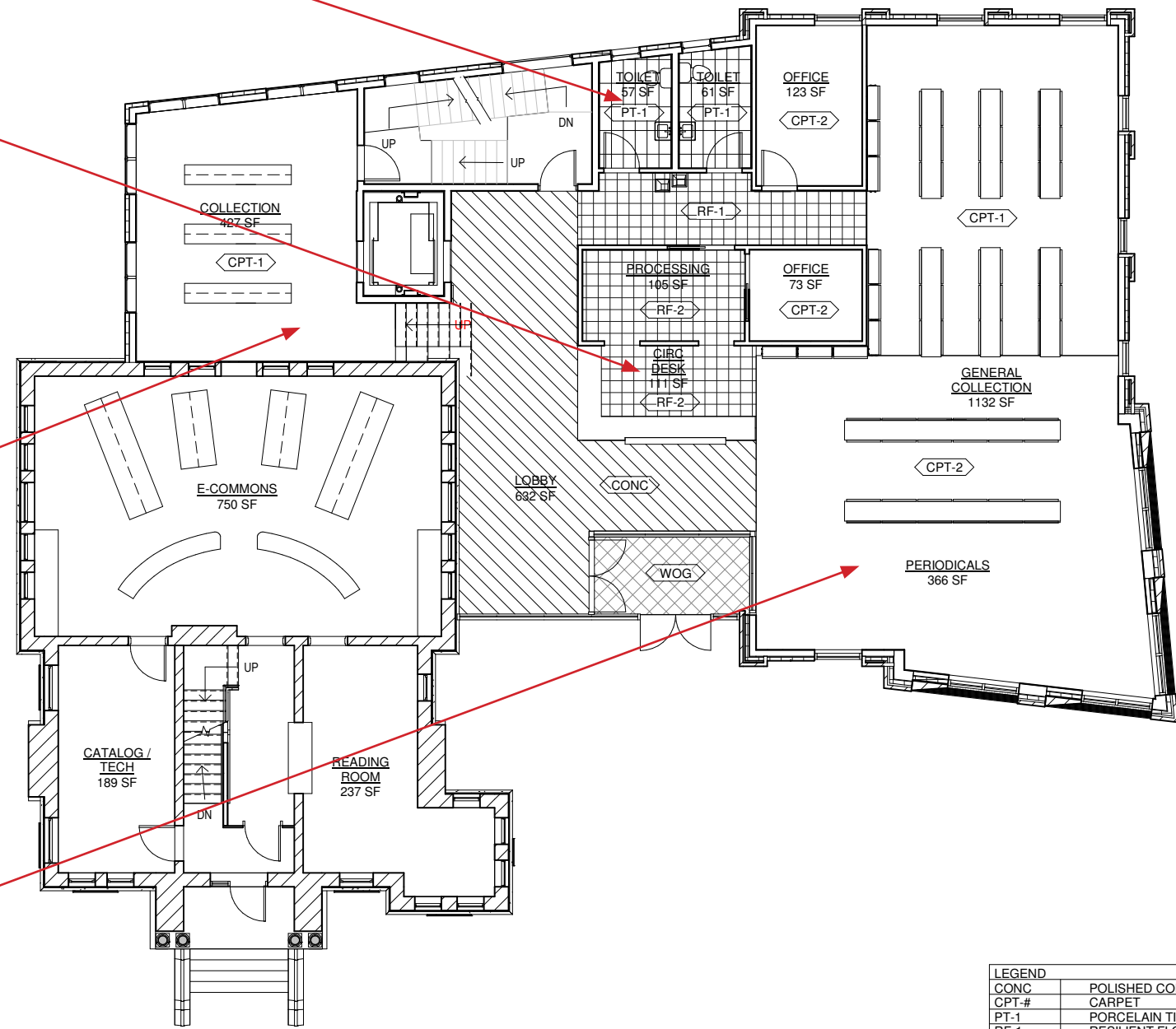
Hexagonal Tile



Linear Carpet Tile



Field Carpet Tile



② FIRST FLOOR FINISH PLAN
1/8" = 1'-0"

LEGEND	
CONC	POLISHED CONCRETE
CPT-#	CARPET
PT-1	PORCELAIN TILE 1
RF-1	RESILIENT FLOORING 1
RF-2	RESILIENT FLOORING 2
WOG	WALK-OFFGRATE
WD	WOOD



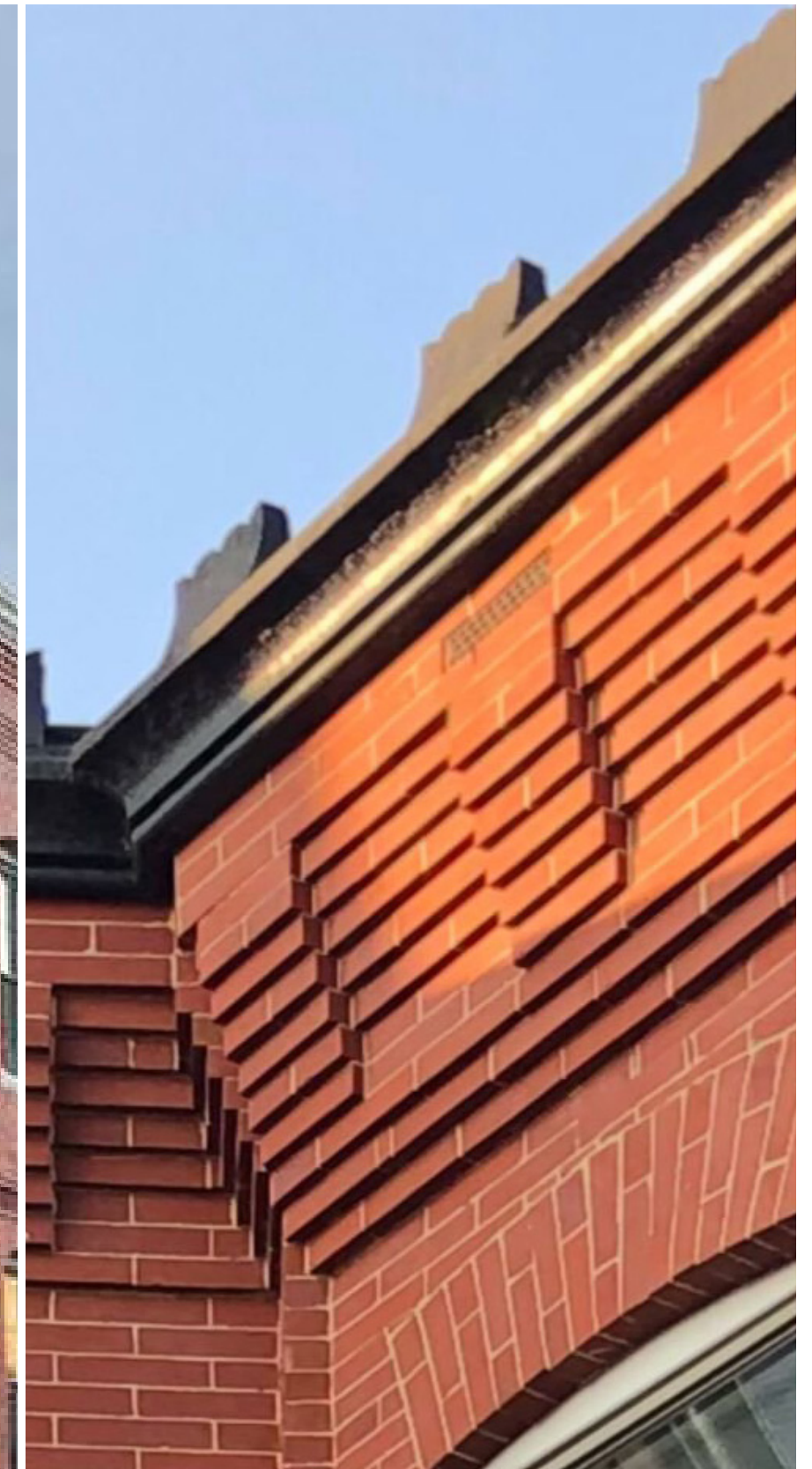
Design Progress



Billerica Memorial HS



Historic Brick Corbel Details







Slate Siding



Metal Roofing



Slate Tile and Brick