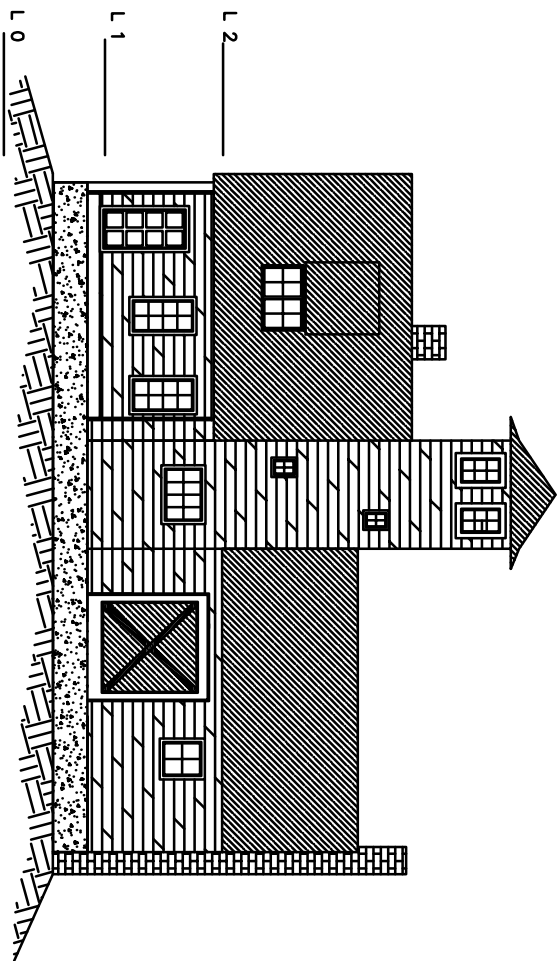


August 2008

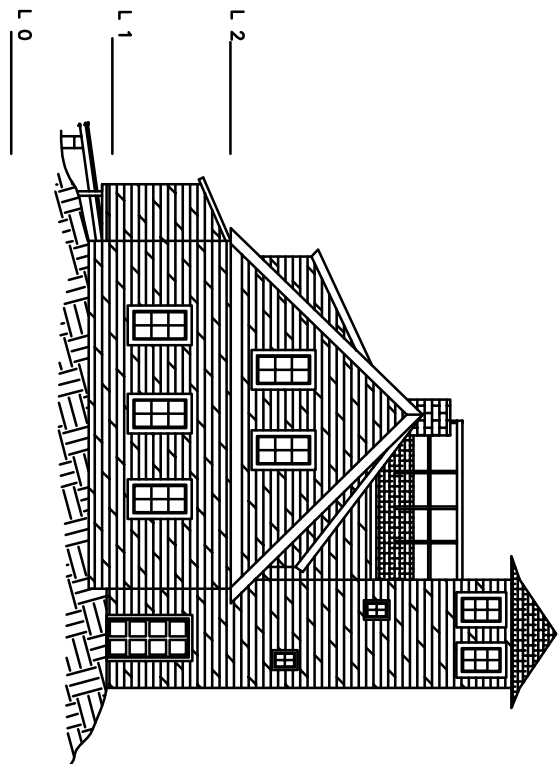
Appendix B

Building Drawings & Damage Summaries:

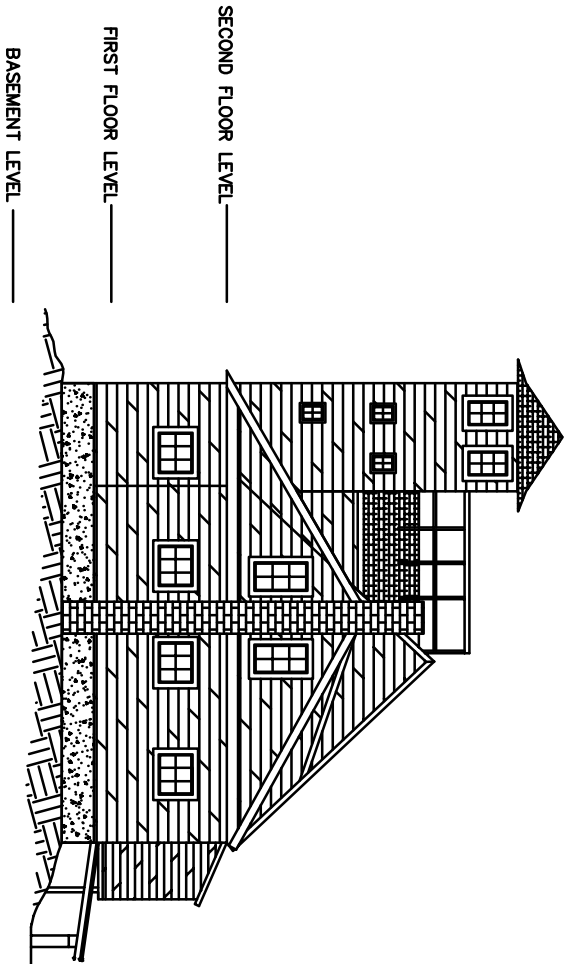
- 1. Approx. Original Elevations circa 1944**
- 2. Approx. Original Plans Circa 1944**
- 3. Initial Assessment: Exterior Damage**
- 4. Initial Assessment: Interior Damage**



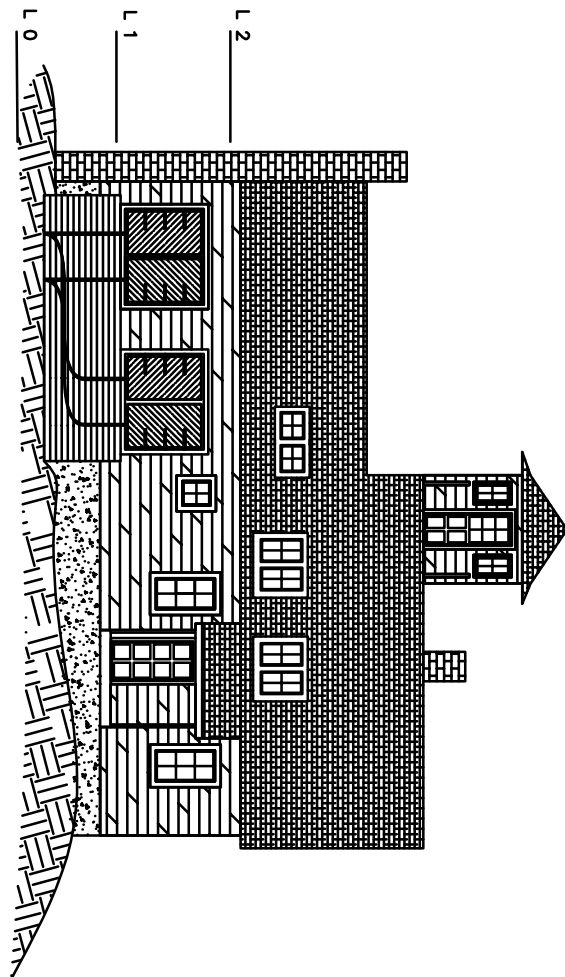
SOUTH ELEVATION



WEST ELEVATION



EAST ELEVATION

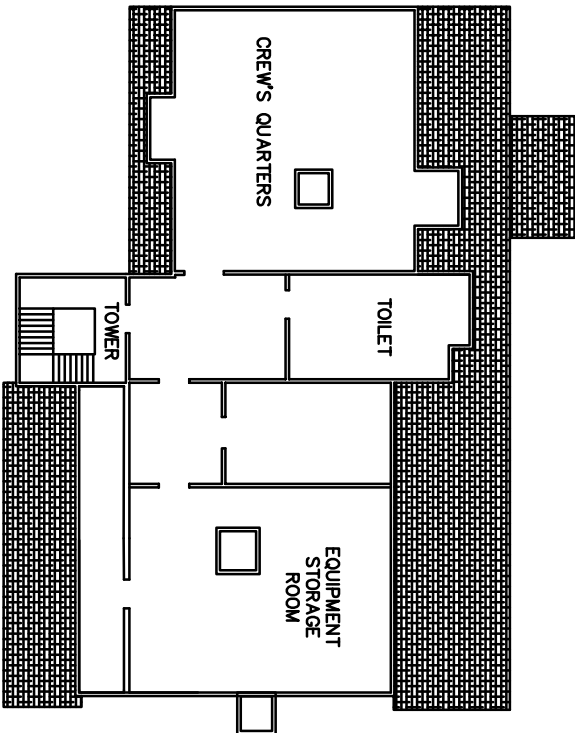


NORTH ELEVATION

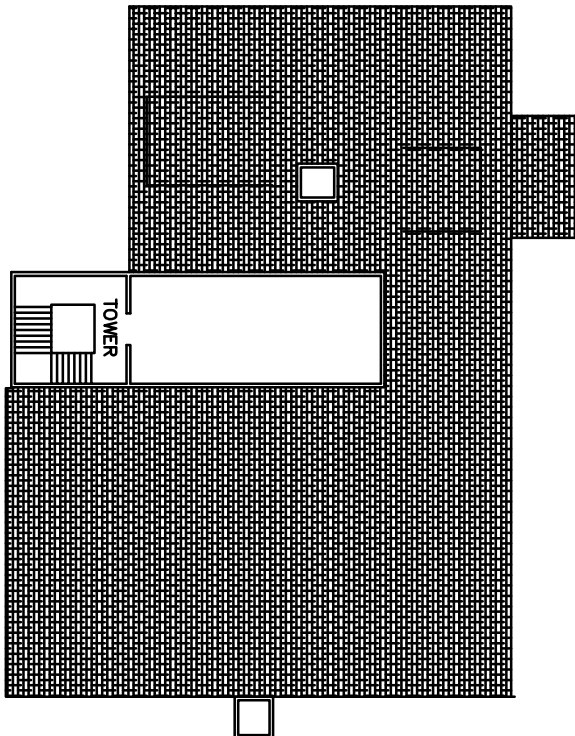
Reference Plan:
These plans are partly based on the Wood Island Maritime
Museum plans by Finegold Alexander & Associates Inc., Boston,
MA

APPROX. ORIGINAL ELEVATIONS CIRCA 1944

SECOND FLOOR PLAN



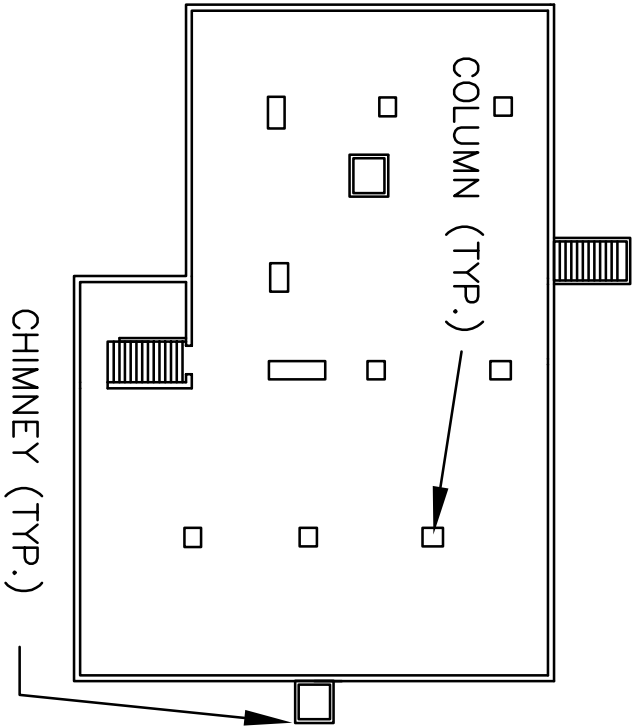
THIRD FLOOR PLAN



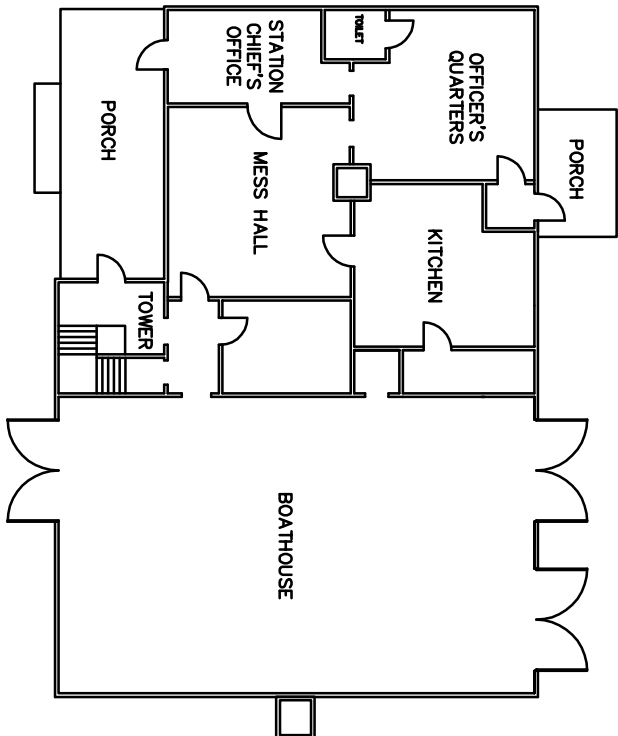
FOURTH FLOOR PLAN



BASEMENT PLAN



FIRST FLOOR PLAN




Reference Plan:
These plans are partly based on the Wood Island Maritime
Museum plans by Finegold Alexander & Associates Inc., Boston,
MA

APPROX. ORIGINAL PLANS CIRCA 1944

| | | |
|-----------|------|------|
| | | |
| | | |
| | | |
| No. | Appd | Date |
| REVISIONS | | |

DATE: AUGUST 22, 2008
SCALE: 1:16
DESIGNED BY: _____
DRAWN BY: KEK
APPROVED BY: _____
PROJECT NO: 2362
FILE NO: 2362_EXISTSTRT

WOOD ISLAND
FEASIBILITY STUDY
TOWN OF KITTERY
KITTERY, MAINE



APPLEDORE

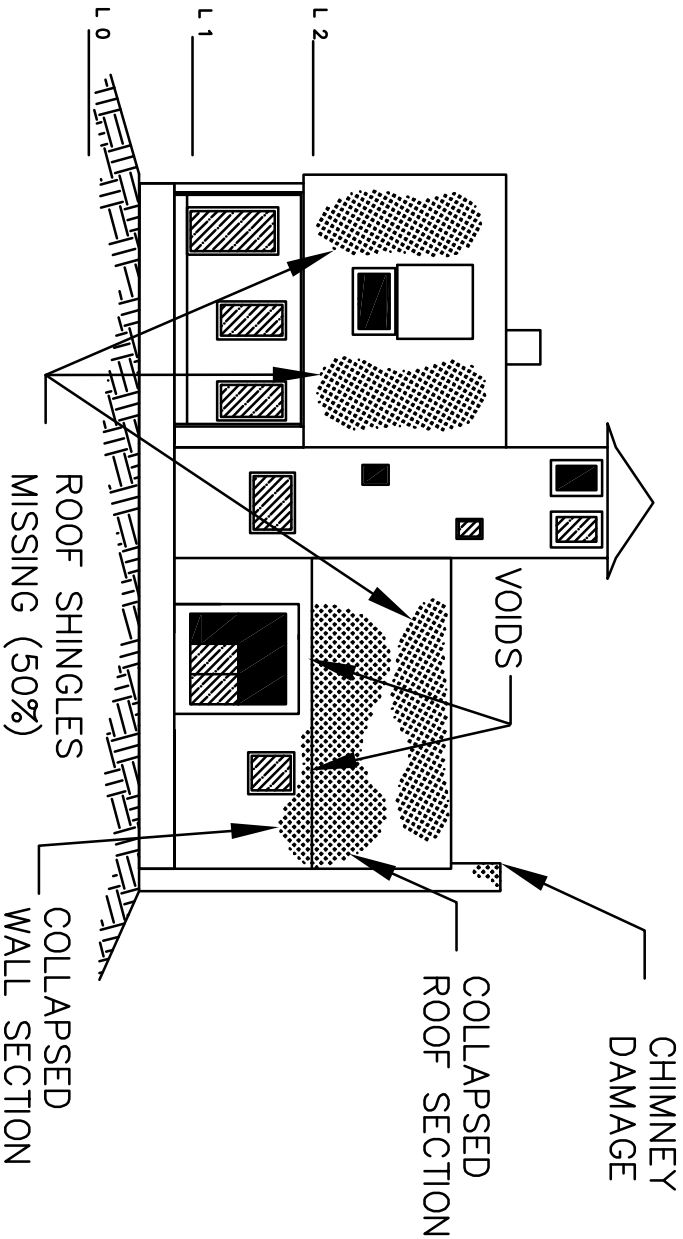
ENGINEERING

177 CORPORATE DRIVE

PORTSMOUTH, NEW HAMPSHIRE 03801

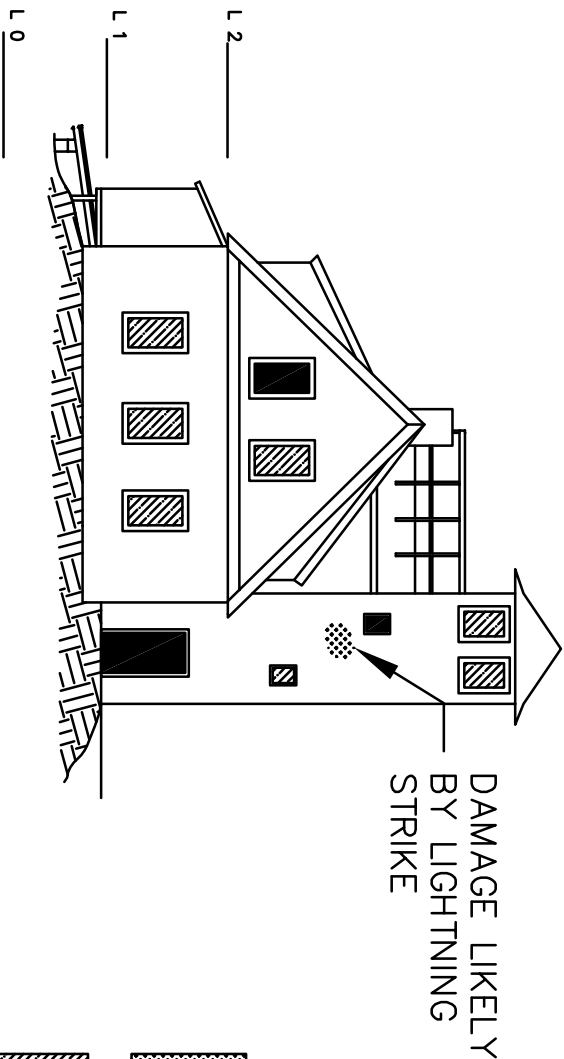
(603) 433-8818

aei@appledoreeng.com



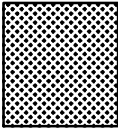
SOUTH ELEVATION

ATLANTIC OCEAN EXPOSURE

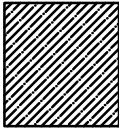


WEST ELEVATION


LEGEND



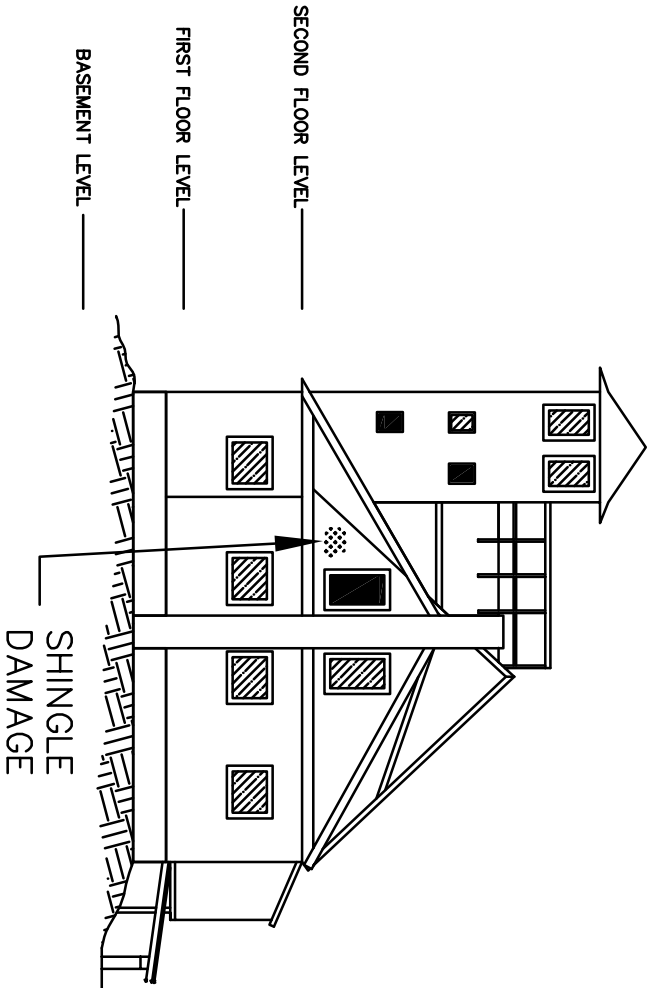
EXTERIOR DAMAGE



WINDOW/DOOR
BLOCKING MATERIAL

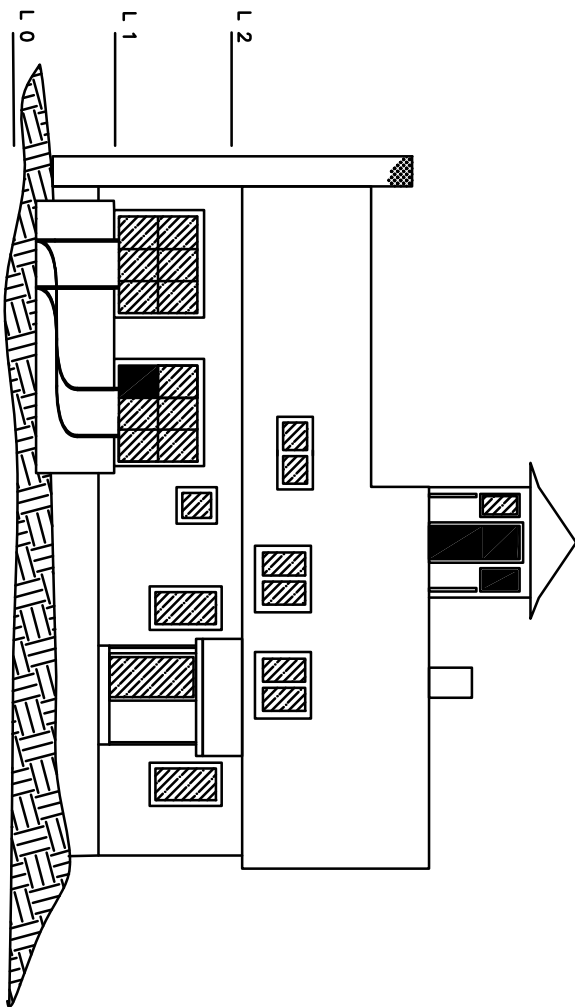


OPEN WINDOW/DOOR
FRAMES



EAST ELEVATION

SECOND FLOOR LEVEL _____
FIRST FLOOR LEVEL _____
BASEMENT LEVEL _____



NORTH ELEVATION

PORTSMOUTH HARBOR EXPOSURE

Reference Plan:


These plans are partly based on the Wood Island Maritime
Museum plans by Finegold Alexander & Associates Inc., Boston,
MA

INITIAL ASSESSMENT: EXTERIOR DAMAGE

| | | | | |
|-----|------|------|-----------|--|
| | | | | |
| | | | | |
| | | | | |
| No. | Appd | Date | REVISIONS | |

DATE: AUGUST 22, 2008
SCALE: 1:16
DESIGNED BY: _____
DRAWN BY: KEK
APPROVED BY: _____
PROJECT NO: 2362
FILE NO: 2362_EXISTSTRT

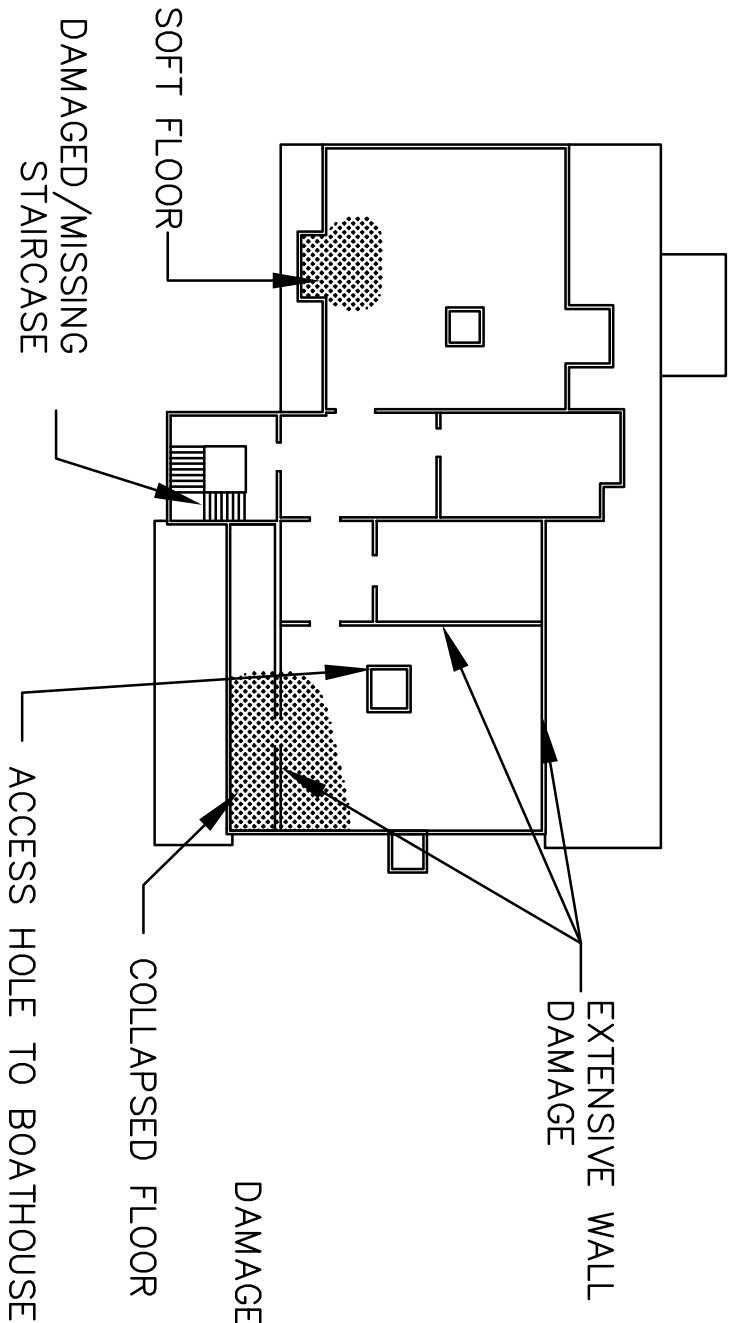
**WOOD ISLAND
FEASIBILITY STUDY
TOWN OF KITTERY
KITTERY, MAINE**



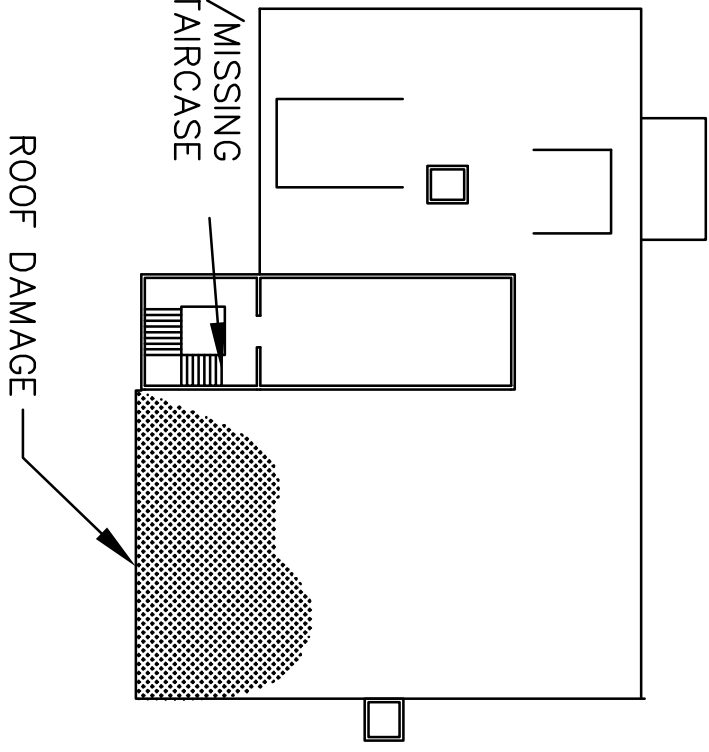
**APPLEDORE
ENGINEERING**

177 CORPORATE DRIVE
PORTSMOUTH, NEW HAMPSHIRE 03801
(603) 433-8818
aei@appledoreeng.com

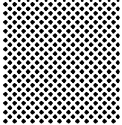
SECOND FLOOR PLAN



THIRD FLOOR PLAN



LEGEND

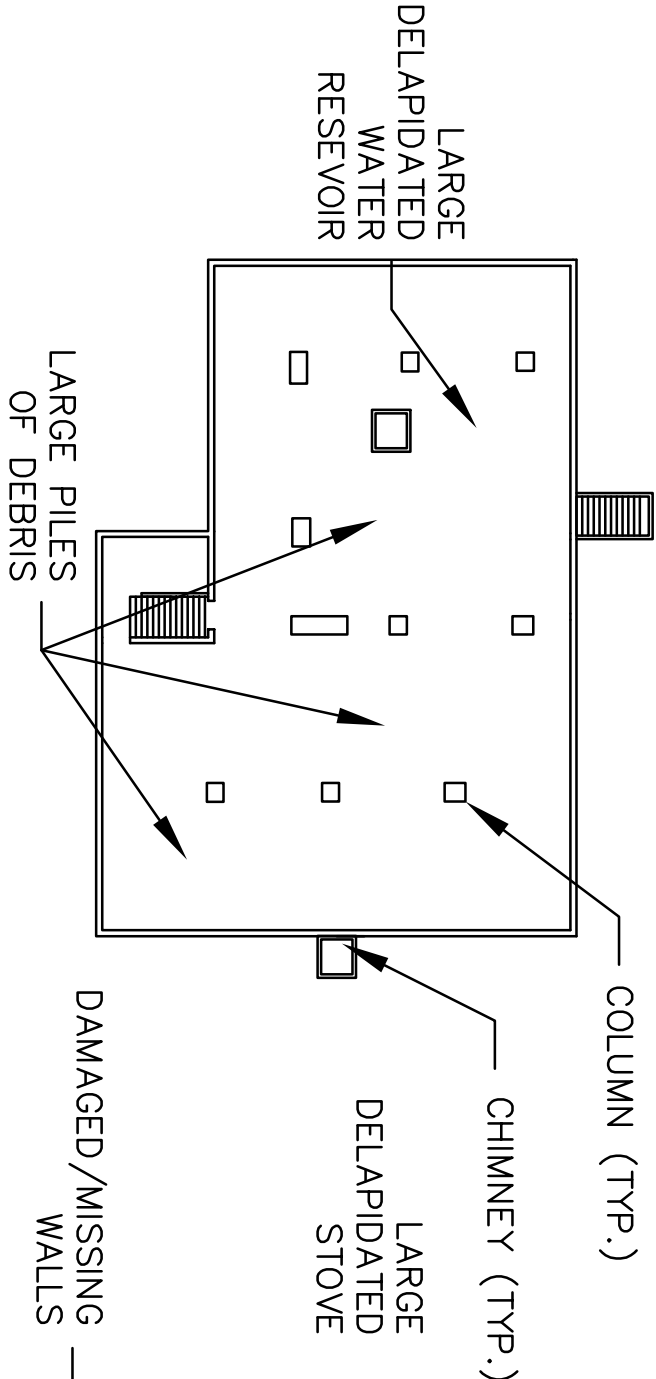


INTERIOR DAMAGE

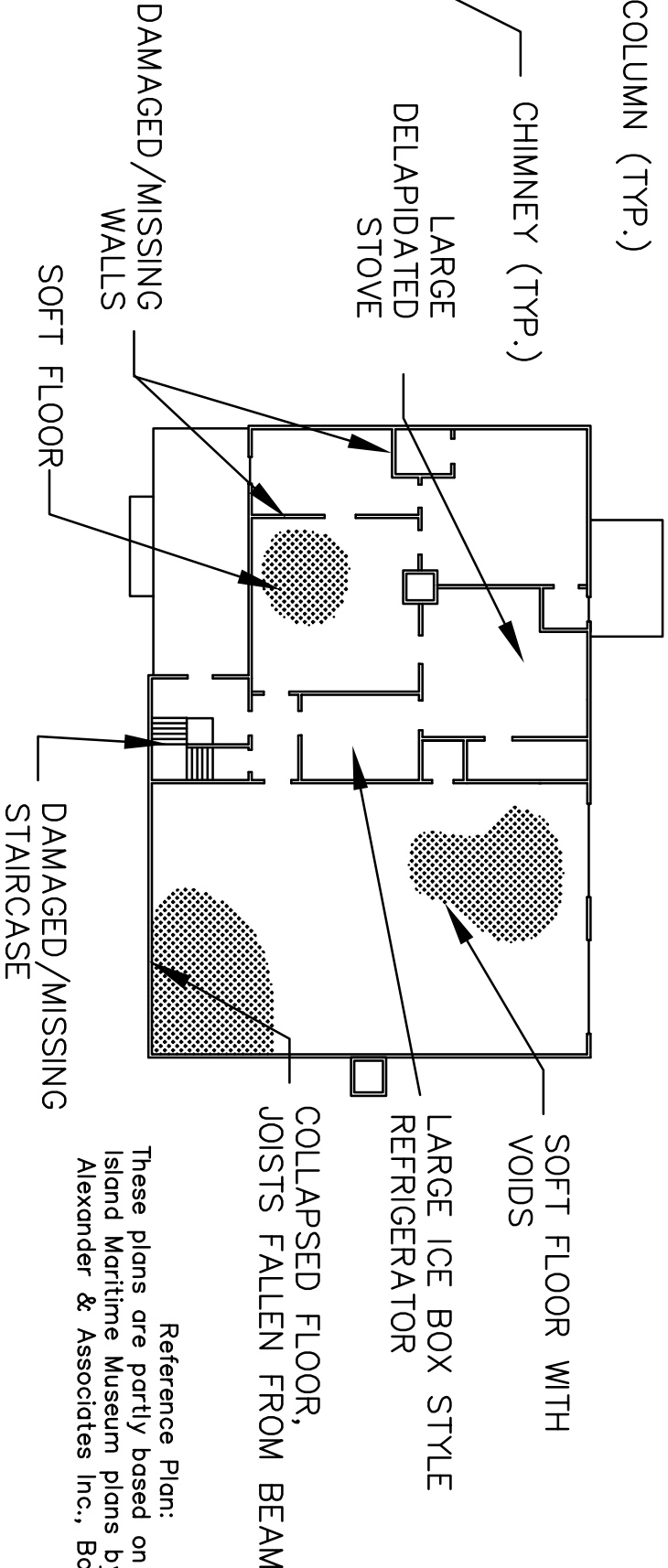
Notes:

- 1) Seagull droppings form large piles in all rooms in the building. Most piles are several inches deep.
- 2) No doors or original windows remain.
- 3) Asbestos insulation covers pipes in the basement.

BASEMENT PLAN



FIRST FLOOR PLAN



Reference Plan:
These plans are partly based on the Wood Island Maritime Museum plans by Finegold Alexander & Associates Inc., Boston, MA

INITIAL ASSESSMENT: INTERIOR DAMAGE

| | | | | | |
|-----|------|------|-----------|--|--|
| | | | | | |
| | | | | | |
| No. | Appd | Date | REVISIONS | | |

DATE: AUGUST 22, 2008
SCALE: 1:16
DESIGNED BY: _____
DRAWN BY: KEK
APPROVED BY: _____
PROJECT NO: 2362
FILE NO: 2362 EXISTSTRT

WOOD ISLAND
FEASIBILITY STUDY
TOWN OF KITTERY
KITTERY, MAINE



APPLEDORE
ENGINEERING

177 CORPORATE DRIVE
PORTSMOUTH, NEW HAMPSHIRE 03801
(603) 433-8818
aei@appledoreeng.com